

# A Journey of Innovation and Impact



By: Lourdes M. Fuentes, Esq., LSSBB

CEO, Karta Legal LLC

April 17, 2024

Seton Hall University

# AGENDA


---

- Pathways to success through hard work and dedication.
- Technological impacts on the legal industry.
- Upskilling and adoption strategies in legal operations.
- The roles of curiosity, positivity, and resilience.
- Fundamentals of personal branding and effective networking.
- Maximizing LinkedIn for career advancement.



# Personal Journey

Background: Upbringing and cultural heritage

A light purple downward-pointing arrow indicating a flow from the first box to the second.

Challenges and Lessons

A light green downward-pointing arrow indicating a flow from the second box to the third.

From Associate to Partner to CEO of a Law Firm to Founder





# Essential Traits for Success

- Curiosity
- Positivity
- Resilience



# The Key Role of Technology

The background of the slide is a detailed, high-angle photograph of a printed circuit board (PCB). The board is densely packed with various electronic components, including resistors, capacitors, and integrated circuits. The traces and components are rendered in a monochromatic blue color scheme, creating a complex, geometric pattern. The lighting is dramatic, highlighting the textures and shapes of the components against a darker background.

- Technology is constantly reshaping different sectors
- Generative AI: a Point of Inflection
- Transformative across the board
- It is crucial to continuously adapting to tech advancements:
  - Tips on staying updated and competitive

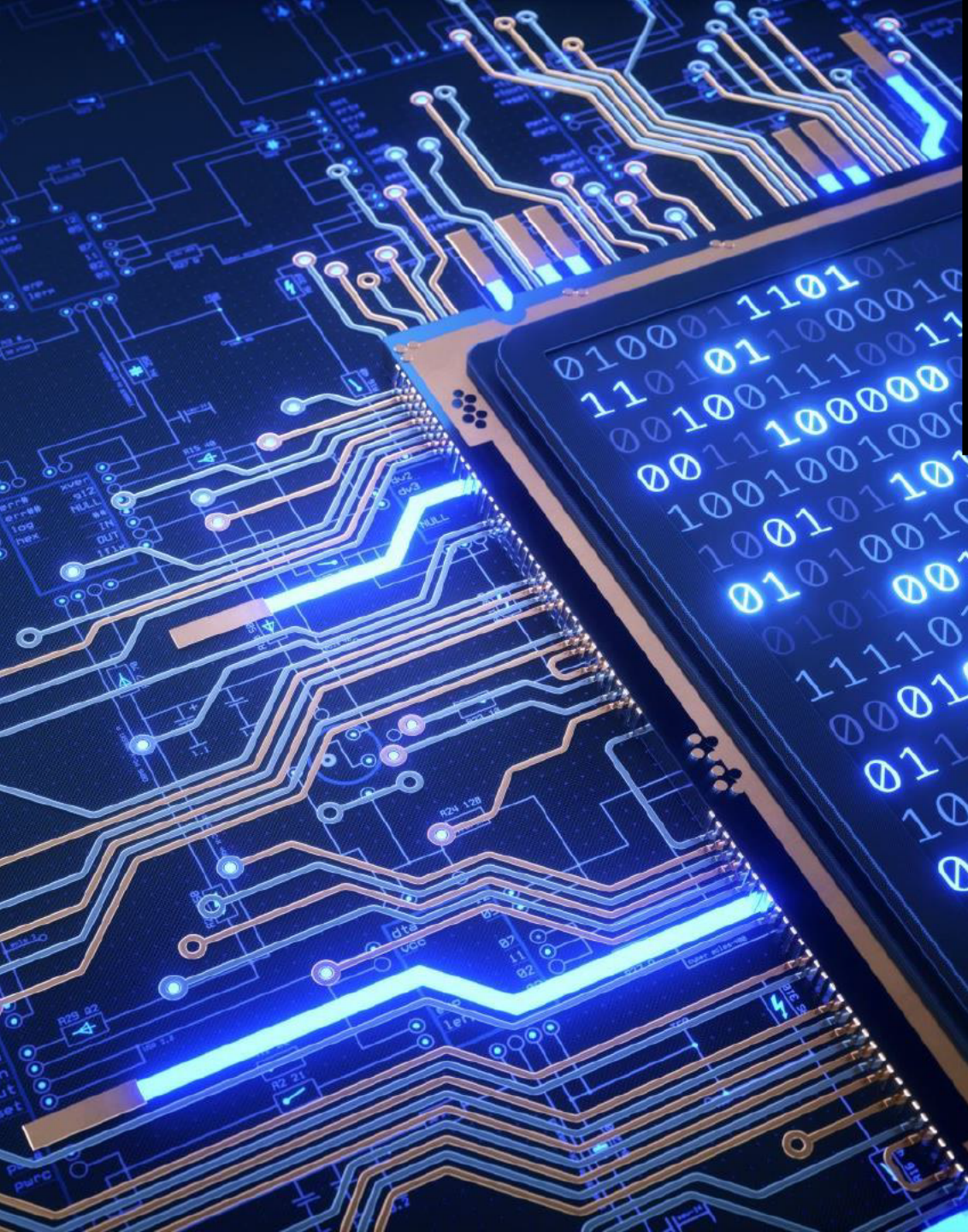




# Legal Industry Technology Silos

- Overview of Silos:
  - Document Management
  - Document Review
  - Matter Management
  - E-billing and Accounting
  - Collaboration Tools
  - Business Intelligence
  - Customer Relationship Management
- Upskilling and Implementation: Strategies for integrating new technologies and processes.
  - Agile Project Management
  - Lean Six Sigma





# What's new?

- LLM technology
  - Microsoft Copilot, Gemini, Claude, ChatGPT.
- Concerns over LLM technology
  - Ethical and Security Concerns: Discuss the potential risks and limitations.
- Responsible Use:
  - Guidelines for ethical and effective use of AI tools.



# AGILE PROJECT MANAGEMENT

- Iterative and incremental method of managing design and build activities.
- Key Features: Emphasize flexibility, continuous improvement, and high adaptability to change:
  - Customer Collaboration: Continuous feedback from clients to improve service delivery.
  - Responsive to Change: Ability to pivot quickly in response to industry changes or client needs.
  - Incremental Delivery: Breaking down large projects into manageable units for quicker, more efficient completion.



# LEAN SIX SIGMA

1

Lean Six Sigma

2

Improve efficiency, speed and performance by systematically removing waste from a process and increasing its flow.

3

Focus on the “voice of the customer” and delivering VALUE

# Legal Process Improvement Analysis

## Deliverable

- The service deliverable is conforming to clients' requirements
- Budget needs to be considered
- Deadlines need to be considered.
- Quality control mechanisms are needed



## Process

- Understand processes
- Identify and remove "waste" (DOWNTIME)
- Clients determine value
- Remove activities that do not add value as defined by the client



## Client

- Clients determine value
- Simplify processes based on the VOC or voice of the client
- Provide metrics
- Analyze data for a "continuous process improvement" state (next project can be better!)

## PROCESS

- Understand what is a process and identify common repeatable processes
- Define and model processes to identify defects and map them for efficiencies

## CLIENT

- Understanding client's requirements and ensuring delivery against it
- Select and implement frameworks to manage client expectations and variations



# TYPES OF WASTE: DOWNTIME

Defects



Overproduction



Waiting



Non-utilizing talent



Transportation



Inventory excess



Motion waste



Excess processing





# Personal Branding and Elevator Pitches

- Professional Identity:
  - Importance of a unique professional presence.
- Elevator Pitch:
  - Tips and examples of effective pitches.
- Authentic Branding:
  - Maintaining authenticity across your personal and professional life.

# Leveraging LinkedIn

- Profile Optimization:
  - Key elements of a standout LinkedIn profile.
- Engagement Strategies:
  - How to actively engage with your network.
- Showcasing Expertise:
  - Utilizing LinkedIn to demonstrate your knowledge and skills.





# Q&A Session

- Open Forum



# Thank you

- Website: [kartalegal.com](http://kartalegal.com)
- Email: [Lourdes@kartalegal.com](mailto:Lourdes@kartalegal.com)
- Please follow Karta Legal LLC on LinkedIn