

INFORMATION PACKET



Jumping Pound Ridge

TOWNHOMES | COCHRANE

Top Quality | Area's Best Value

Another Quality Development By

 **Slokker Homes**

SLOKKER EST. 1935 CANADA | EUROPE | USA

403.401.9283 | sales@jumpingpound.com | www.JumpingPound.com

Interior Features and Finishing

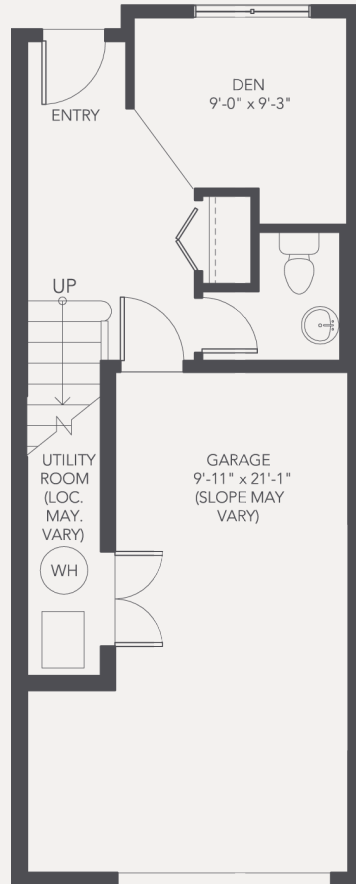
- 9' Ceilings throughout Main Living Areas
 - Six Appliances included (*Fridge, Stove, Dishwasher, OTR, Energy Saving Front Load Washer & Dryer*)
 - Designer Kitchen with Full Height Tile Backsplash
 - Functional Extended Eating Bar
 - Pull Out Spray Faucet in Kitchen
 - Window Coverings included (*1" Aluminum Blinds*)
 - Knockdown Ceiling to all Finished Areas
 - 2 or 3 Piece Rough-in to Lower Level (*varies by unit*)
- Open Contemporary Living Spaces
 - Laundry Located on Bedroom Level
 - High Efficiency Furnace
 - Decorative, Modern Glass Lighting
 - Modern Finishing Package with Oversized Baseboards and Casings
 - Hardwired Smoke and Carbon Monoxide Detectors
 - Colour Palettes Selected by a Professional Designer
 - Several Choices in Standard Finishing Packages

Exterior Features

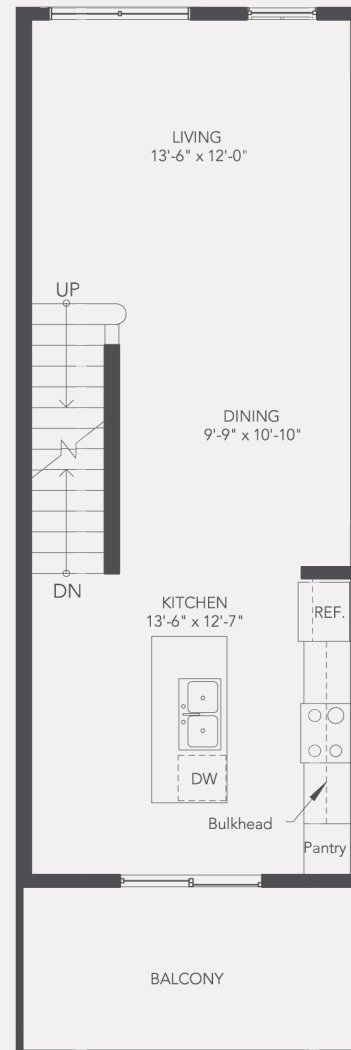
- Low Maintenance Exteriors
- Attached Garages with Driveways
- Spacious Balconies/Patios
- Fully Landscaped with Underground Sprinklers
- Snow Removal and all Outside Maintenance included in Condo Fees
- Plenty of Windows to Bathe Your Townhome in Natural Light
- One Year Interior Warranty and Ten Year Structural Warranty



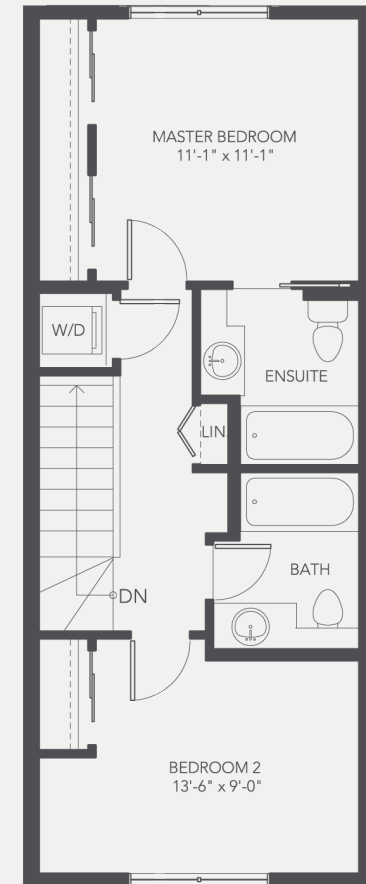
LOWER LEVEL



MAIN LEVEL



UPPER LEVEL



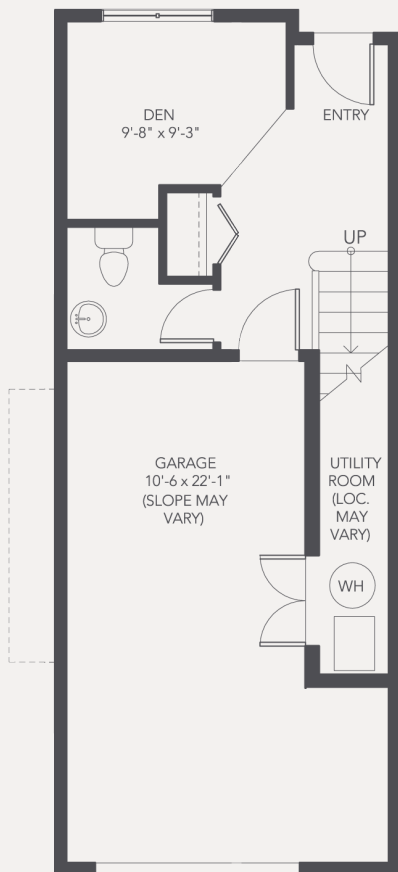
Total
1254 sq. ft.

GARAGE / ENTRY - DEN & BATH
204 sq. ft. (Developed)
518 sq. ft. (Total incl. undeveloped)

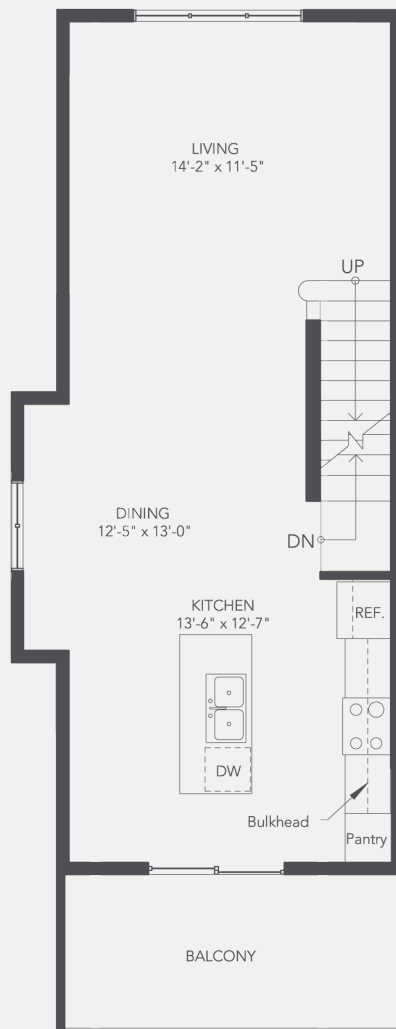
LIVING / DINING / KITCHEN
525 sq. ft.

2 BEDROOM / 2 BATH
525 sq. ft.

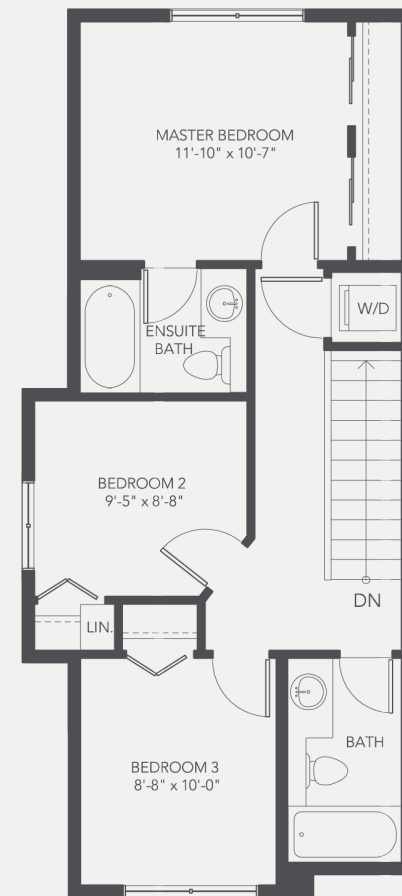
LOWER LEVEL



MAIN LEVEL



UPPER LEVEL



Total
1405 sq. ft.

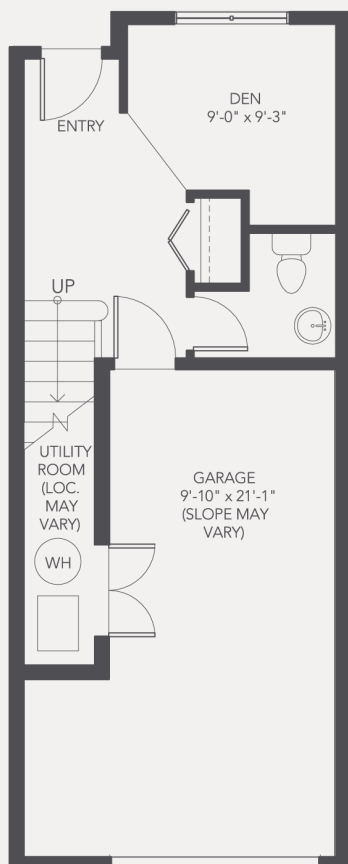
GARAGE / ENTRY - DEN & 1/2 BATH
207 sq. ft. (Developed)
566 sq. ft. (Total incl. undeveloped)

LIVING / DINING / KITCHEN
594 sq. ft.

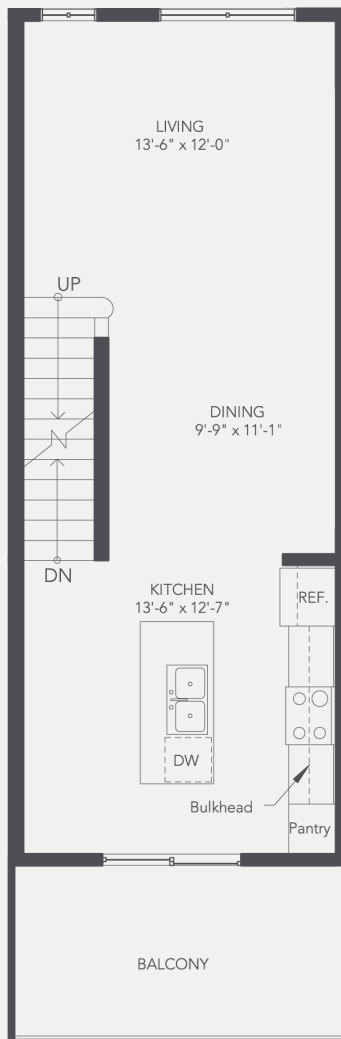
3 BEDROOM / 2 BATH
604 sq. ft.

NOTE: WINDOW SIZE AND LOCATION MAY VARY. MEASUREMENTS ARE APPROXIMATE. FLOORPLANS ARE FOR ILLUSTRATION PURPOSES AND MAY BE SUBJECT TO CHANGE. DEVELOPER MAY MAKE REVISIONS AS REQUIRED - CONSULT SALES REPS FOR FINAL PLANS.

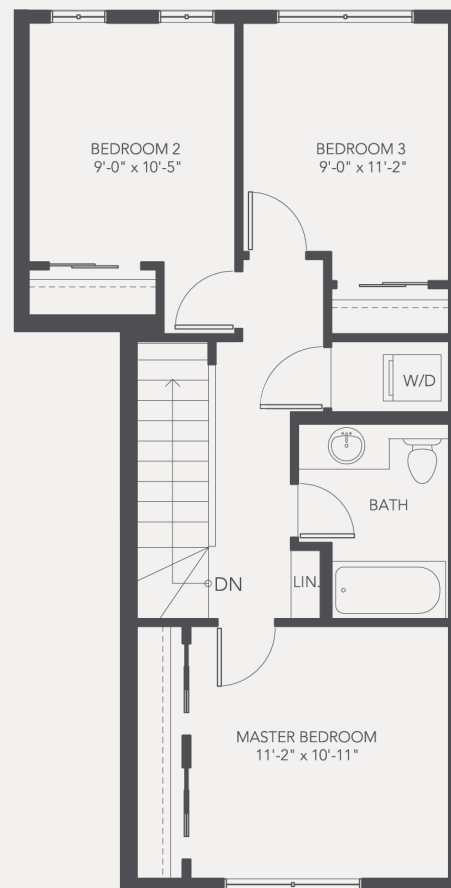
LOWER LEVEL



MAIN LEVEL



UPPER LEVEL



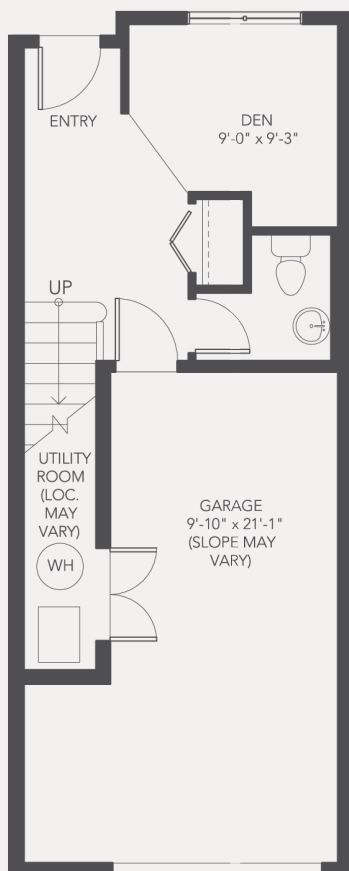
Total
1331 sq. ft.

GARAGE / ENTRY - DEN & 1/2 BATH
204 sq. ft. (Developed)
518 sq. ft. (Total incl. undeveloped)

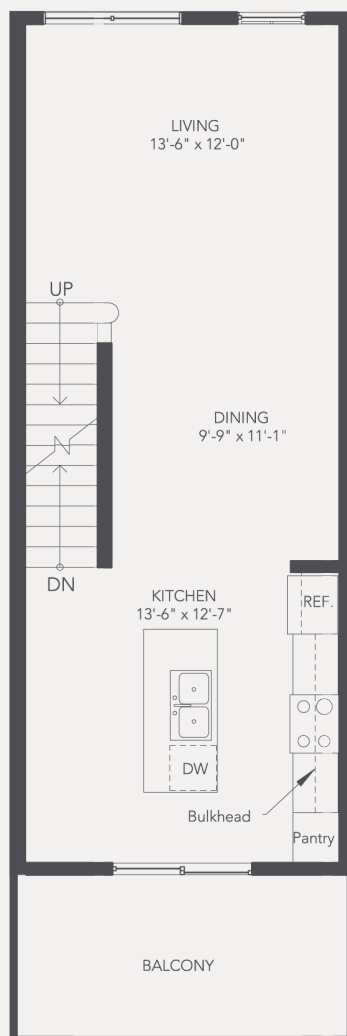
LIVING / DINING / KITCHEN
525 sq. ft.

3 BEDROOM / 1 BATH
602 sq. ft.

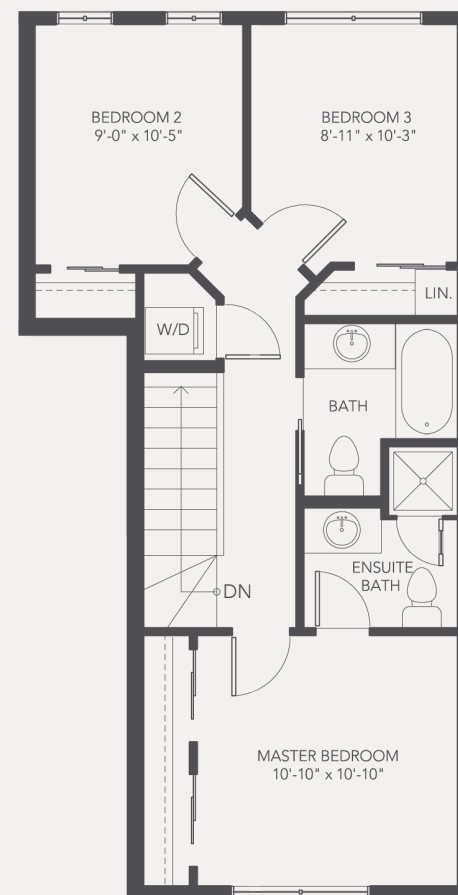
LOWER LEVEL



MAIN LEVEL



UPPER LEVEL



Total
1331 sq. ft.

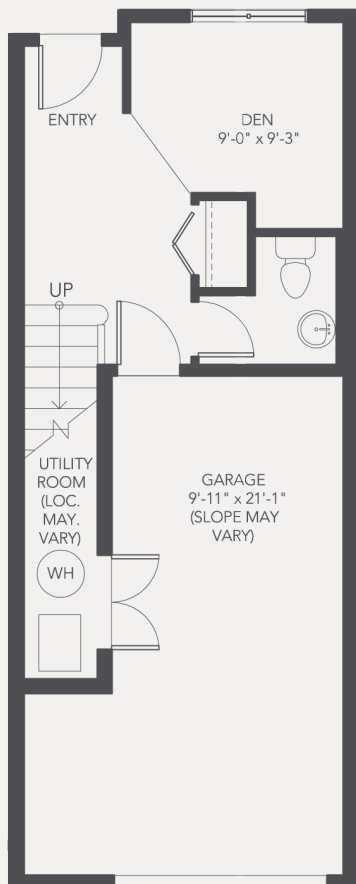
GARAGE / ENTRY - DEN & 1/2 BATH
204 sq. ft.(Developed)
518 sq.ft. (Total incl. undeveloped)

LIVING / DINING / KITCHEN
525 sq. ft.

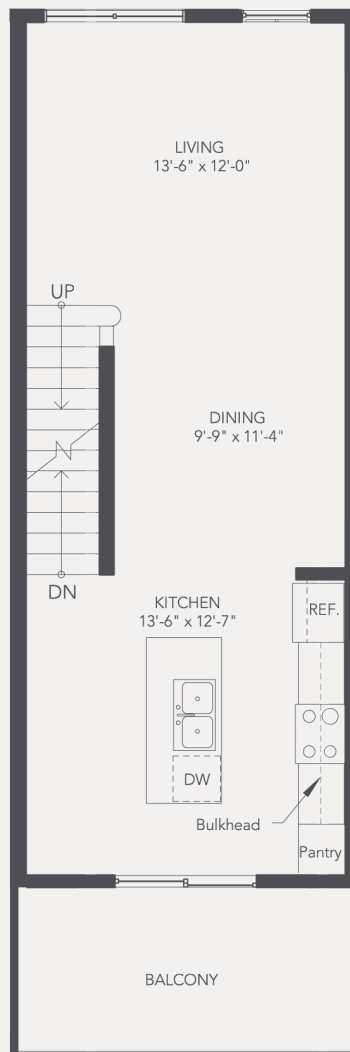
3 BEDROOM / 2 BATH
602 sq. ft.

NOTE: WINDOW SIZE AND LOCATION MAY VARY. MEASUREMENTS ARE APPROXIMATE. FLOORPLANS ARE FOR ILLUSTRATION PURPOSES AND MAY BE SUBJECT TO CHANGE. DEVELOPER MAY MAKE REVISIONS AS REQUIRED - CONSULT SALES REPS FOR FINAL PLANS.

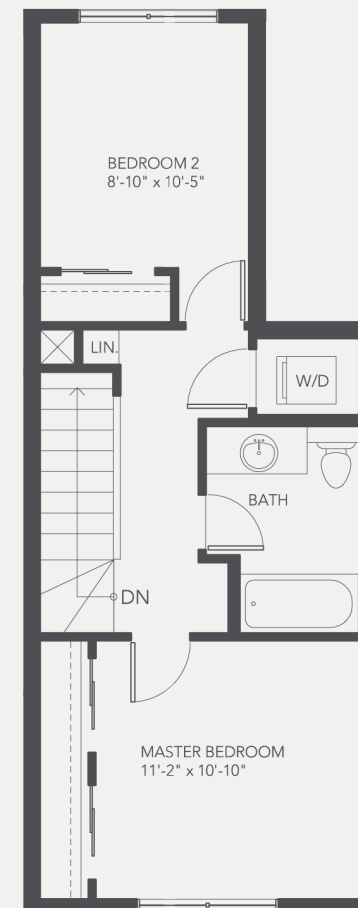
LOWER LEVEL



MAIN LEVEL



UPPER LEVEL



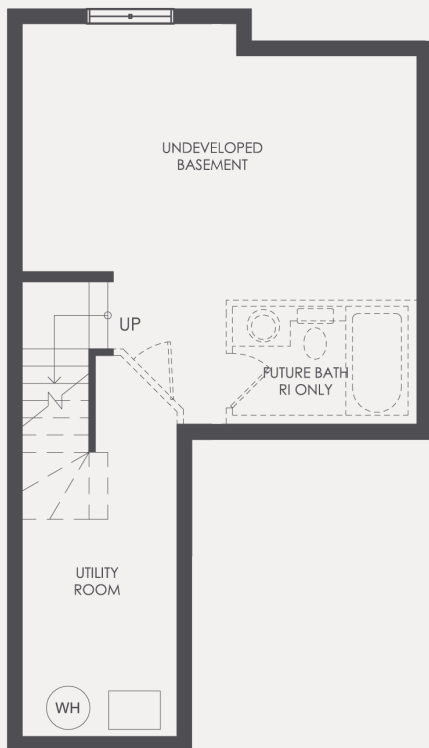
Total
1203 sq. ft.

GARAGE / ENTRY - DEN & 1/2 BATH
204 sq. ft. (Developed)
518 sq. ft. (Total incl. undeveloped)

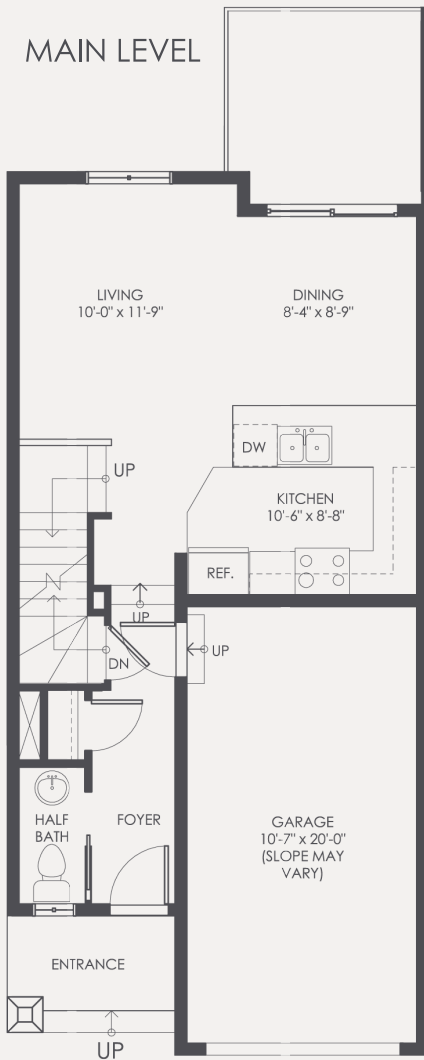
LIVING / DINING / KITCHEN
525 sq. ft.

2 BEDROOM / 1 BATH
474 sq. ft.

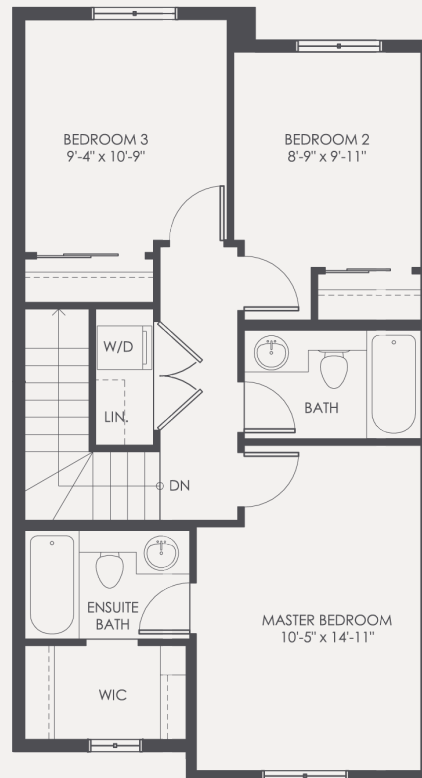
LOWER LEVEL



MAIN LEVEL



UPPER LEVEL



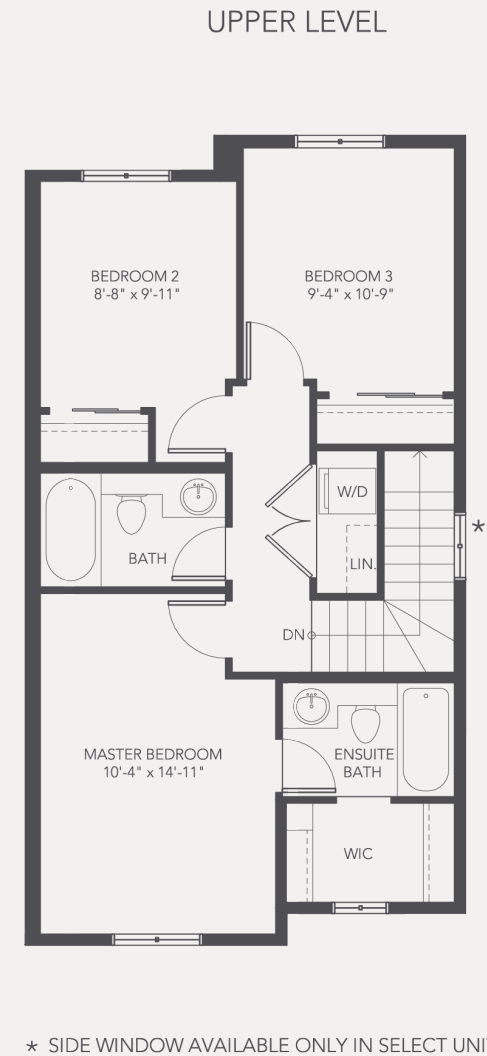
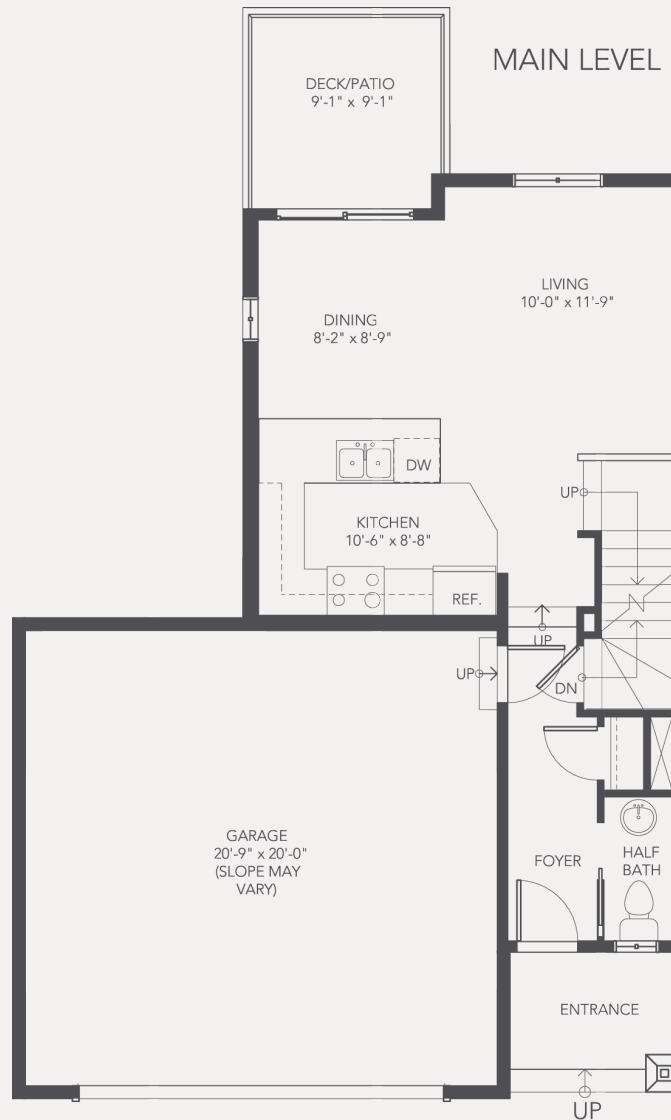
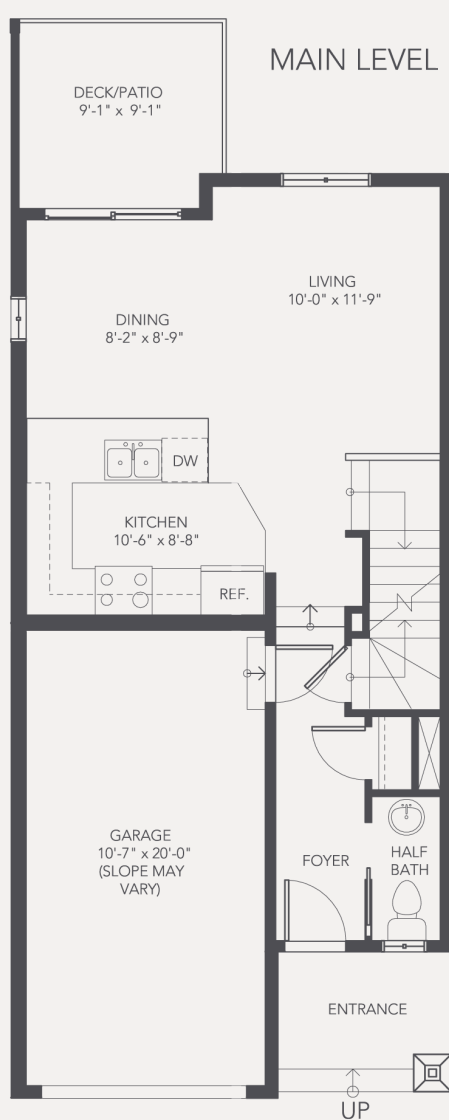
Total
1137 sq. ft.

UNDEVELOPED BASEMENT
484 sq. ft.

LIVING / DINING
(not including garage)
484 sq. ft.

3 BEDROOM / 2 BATH
653 sq. ft.

NOTE: MEASUREMENTS ARE APPROXIMATE. FLOORPLANS ARE FOR ILLUSTRATION PURPOSES AND MAY BE SUBJECT TO CHANGE. DEVELOPER MAY MAKE REVISIONS AS REQUIRED - CONSULT SALES REPS FOR FINAL PLANS.



* SIDE WINDOW AVAILABLE ONLY IN SELECT UNITS

Options

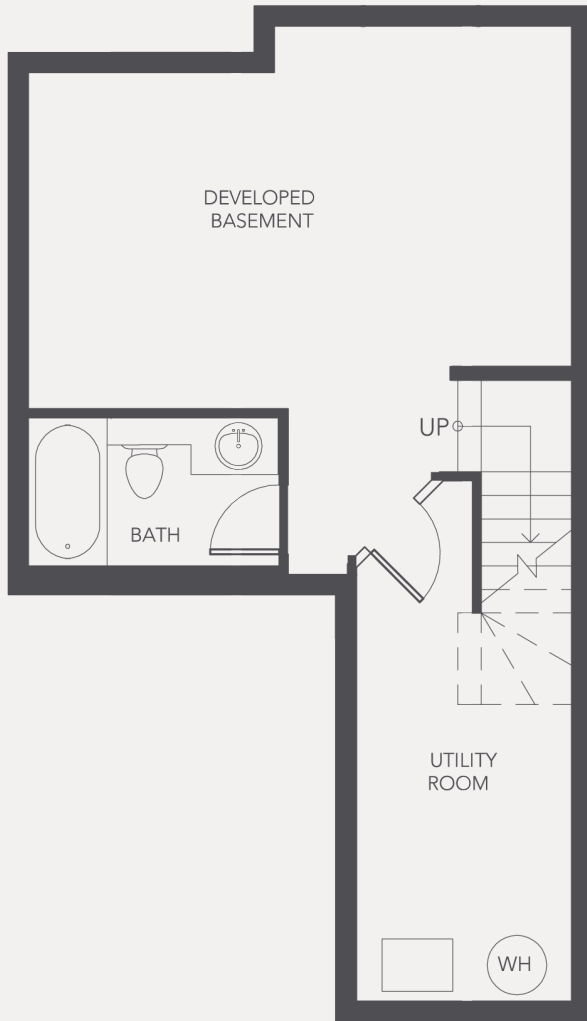
LIVING/DINING - SINGLE GARAGE
 (not including garage)
 484 sq. ft.

LIVING / DINING - DOUBLE GARAGE
 (not including garage)
 484 sq. ft.

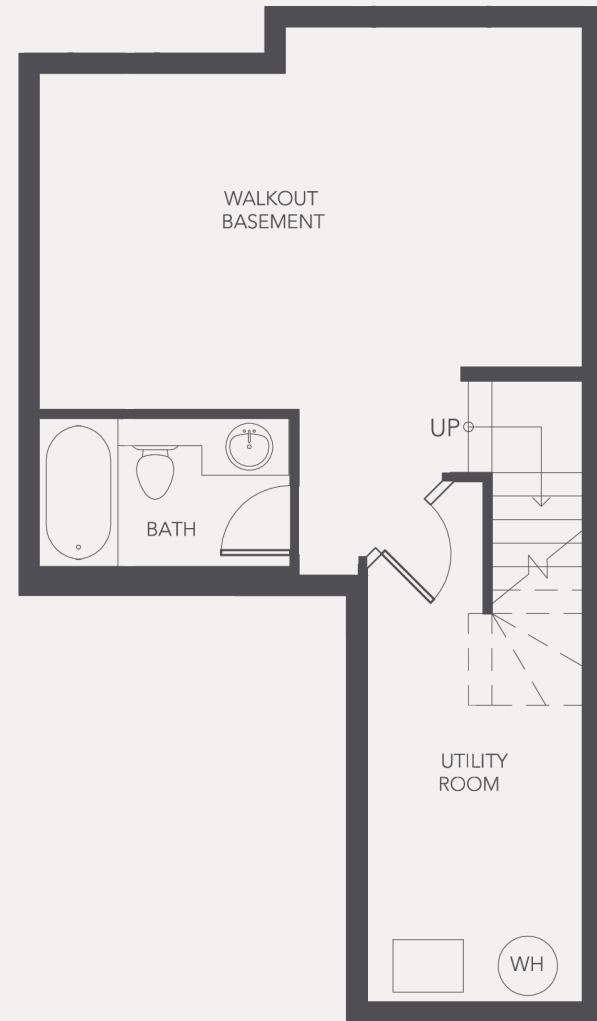
3 BEDROOM / 2 BATH
 653 sq. ft.

NOTE: MEASUREMENTS ARE APPROXIMATE. FLOORPLANS ARE FOR ILLUSTRATION PURPOSES AND MAY BE SUBJECT TO CHANGE. DEVELOPER MAY MAKE REVISIONS AS REQUIRED - CONSULT SALES REPS FOR FINAL PLANS.

LOWER LEVEL



LOWER LEVEL



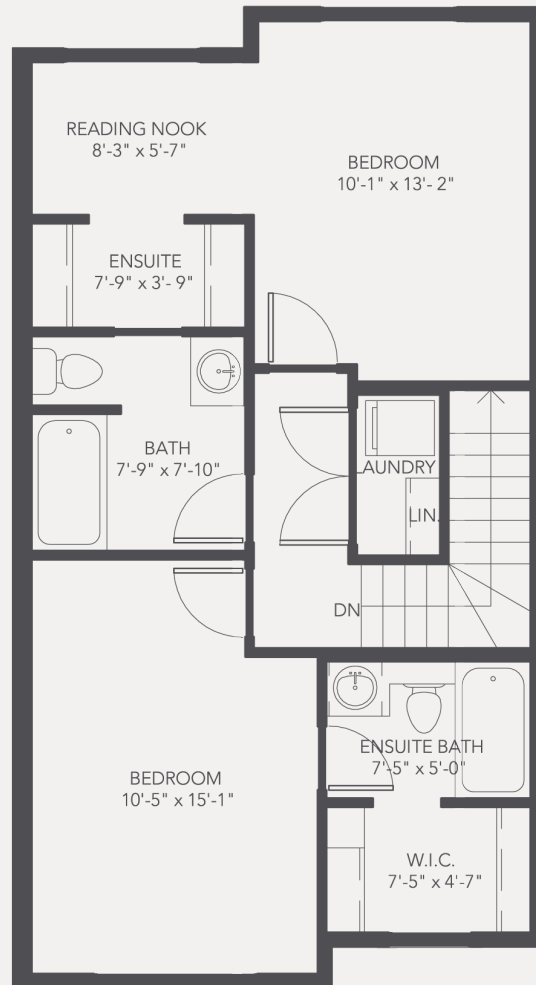
Total
484 sq. ft.

DEVELOPED BASEMENT
484 sq. ft.

WALKOUT BASEMENT
484 sq. ft.

NOTE: MEASUREMENTS ARE APPROXIMATE. FLOORPLANS ARE FOR ILLUSTRATION PURPOSES AND MAY BE SUBJECT TO CHANGE. DEVELOPER MAY MAKE REVISIONS AS REQUIRED - CONSULT SALES REPS FOR FINAL PLANS.

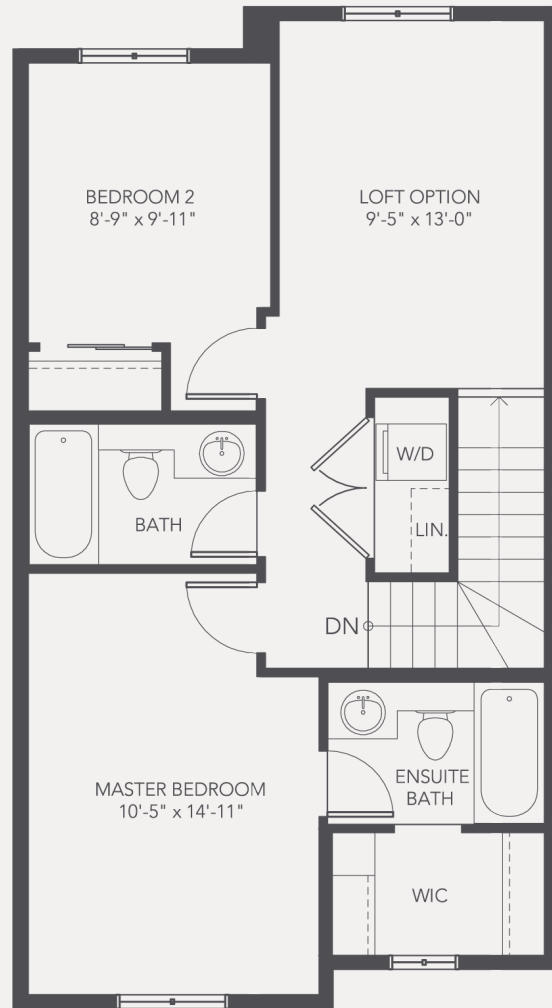
UPPER LEVEL



Total
653 sq. ft.

2 BEDROOM / 2 BATH
653 sq. ft.

UPPER LEVEL

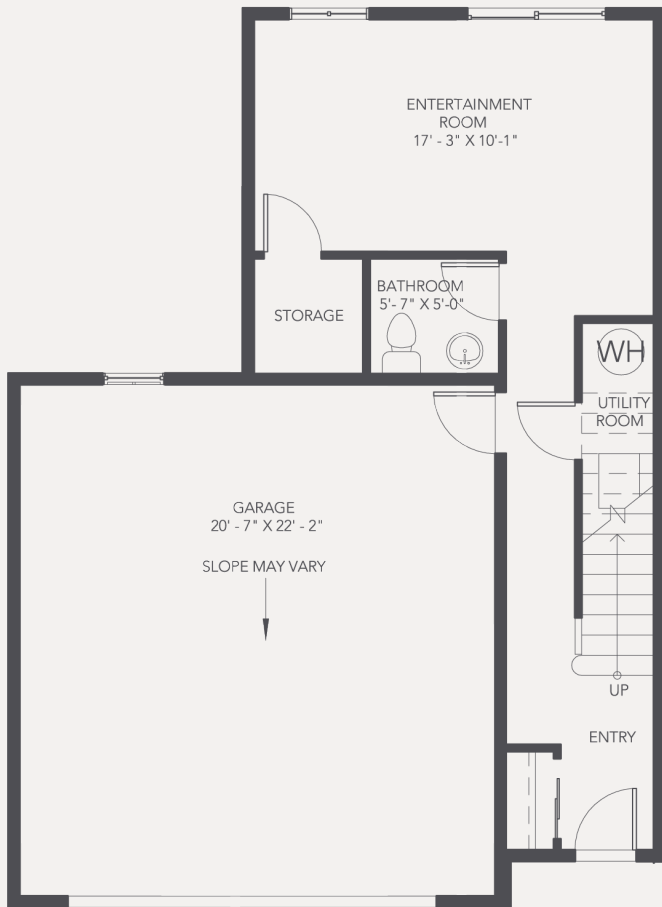


Total
653 sq. ft.

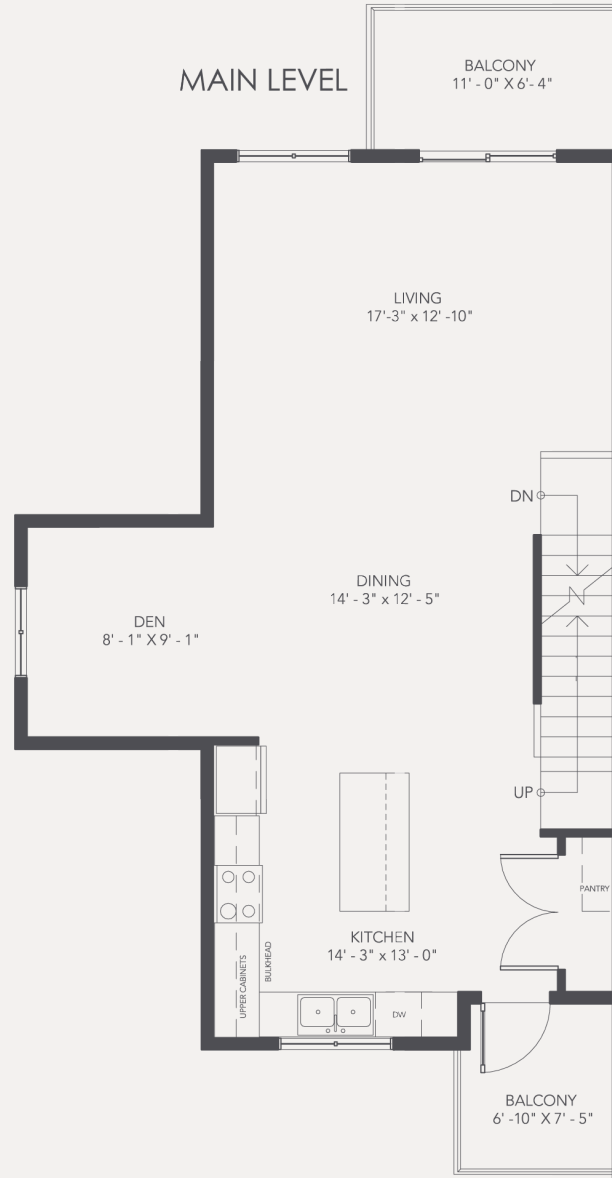
2 BEDROOM / 2 BATH
653 sq. ft.

NOTE: MEASUREMENTS ARE APPROXIMATE. FLOORPLANS ARE FOR ILLUSTRATION PURPOSES AND MAY BE SUBJECT TO CHANGE. DEVELOPER MAY MAKE REVISIONS AS REQUIRED - CONSULT SALES REPS FOR FINAL PLANS.

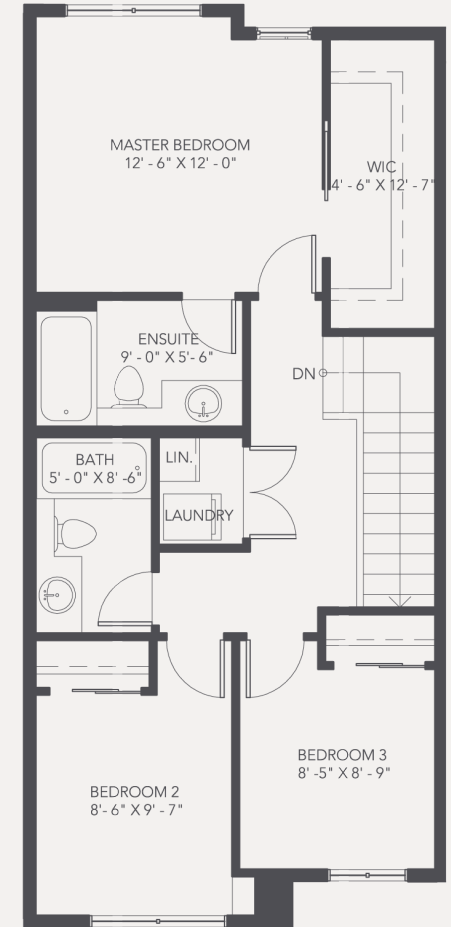
LOWER LEVEL



MAIN LEVEL



UPPER LEVEL



Total
1907 sq. ft.

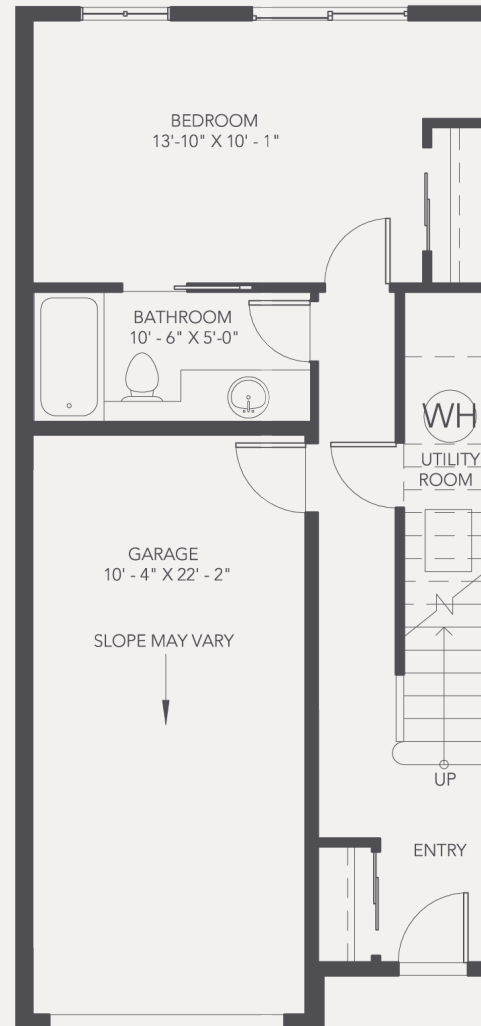
ENTRY / ENTERTAINMENT ROOM
430 sq. ft
931 sq.ft. (Total incl. Double Garage)

LIVING / DINING / KITCHEN
777 sq. ft.

3 BEDROOM / 2 BATH
700 sq. ft.

NOTE: WINDOW SIZE AND LOCATION MAY VARY. MEASUREMENTS ARE APPROXIMATE. FLOORPLANS ARE FOR ILLUSTRATION PURPOSES AND MAY BE SUBJECT TO CHANGE. DEVELOPER MAY MAKE REVISIONS AS REQUIRED - CONSULT SALES REPS FOR FINAL PLANS.

LOWER LEVEL



ENTRY / BEDROOM & BATH
430 sq. ft
690 sq.ft. (Total incl. Single Car Garage)