



JUNIPER

IN ASPEN SPRING

The information presented in the renderings is for general information purposes only and should not be relied upon for making any decision related to the purchase or lease of any property. The developer reserves the right to modify, revise, or withdraw any or all of the renderings without notice and without obligation.



The information presented in the renderings is for general information purposes only and should not be relied upon for making any decision related to the purchase or lease of any property. The developer reserves the right to modify, revise, or withdraw any or all of the renderings without notice and without obligation.

**DISCOVER UPSCALE LIVING
IN THE CORE OF ASPEN
SPRINGS, SW CALGARY.**



| OPEN CONCEPT DESIGN

| 9' CEILINGS

HIGH-QUALITY CABINETS
SOFT-CLOSE DOORS AND
DRAWERS

APPLIANCES IN
STAINLESS STEEL

QUARTZ
COUNTERTOPS

BUILT-IN OTR
FULL HEIGHT
BACKSPLASH

PULL DOWN FAUCET

BREAKFAST BAR

LUXURY VINYL PLANK

FLOORING WITH CORK UNDERLAY
THROUGHOUT

Please take note that all images, drawings, representations, and visualizations contained within our promotional and informational handout sheets are intended solely for illustrative purposes. These images are not to be construed as warranties, promises, or guarantees of the final product or service. They serve only as a generic guide and are subject to variation. The Developer expressly reserves the right, at its sole discretion, to alter, amend, revise, or discontinue any feature, specification, or characteristic of the product or service at any time and without any obligation to provide prior notice of such changes. Such rights may be exercised for reasons that include but are not limited to product or service improvement, availability of materials, market conditions, or regulatory compliance.



COMPREHENSIVE 1-2-5-10 NEW HOME WARRANTY

1 YEAR FOR DEFECTS IN LABOUR & MATERIAL

2 YEAR FOR DEFECTS IN LABOUR & MATERIALS FOR DELIVERY AND DISTRIBUTION SYSTEMS

5 YEAR FOR BUILDING ENVELOPE

10 YEAR FOR STRUCTURAL DEFECTS

UPGRADE OPTIONS

APPLIANCE PACKAGES

LIGHTING PACKAGES

PLUMBING FIXTURES

STONE COUNTERTOPS

BACKSPLASH TILE

KITCHEN SINK

KITCHEN CABINETS

JUNIPER

IN ASPEN SPRING

Please take note that all images, drawings, representations, and visualizations contained within our promotional and informational handout sheets are intended solely for illustrative purposes. These images are not to be construed as warranties, promises, or guarantees of the final product or service. They serve only as a generic guide and are subject to variation. The Developer expressly reserves the right, at its sole discretion, to alter, amend, revise, or discontinue any feature, specification, or characteristic of the product or service at any time and without any obligation to provide prior notice of such changes. Such rights may be exercised for reasons that include but are not limited to product or service improvement, availability of materials, market conditions, or regulatory compliance.

Please take note that all images, drawings, representations, and visualizations contained within our promotional and informational handout sheets are intended solely for illustrative purposes. These images are not to be construed as warranties, promises, or guarantees of the final product or service. They serve only as a generic guide and are subject to variation. The Developer expressly reserves the right, at its sole discretion, to alter, amend, revise, or discontinue any feature, specification, or characteristic of the product or service at any time and without any obligation to provide prior notice of such changes. Such rights may be exercised for reasons that include but are not limited to product or service improvement, availability of materials, market conditions, or regulatory compliance.



BATHROOMS

CHROME SINGLE LEVER FAUCET

THOUGHTFUL DESIGNED VANITIES
FOR ADDED STORAGE

ECO-FRIENDLY FIXTURES,
SHOWERHEAD, TOILET, AND
FAUCET

TOILET WITH SOFT CLOSE
DETACHABLE SEAT

LAUNDRY

IN SUITE FRONT ENERGY STAR LOAD
STACKED WASHER & DRYER

VENTILATED TO THE EXTERIOR WITH
QUICK WATER SHUT-OFF VALVE

DURABLE & EASY TO CLEAN PET
FRIENDLY VINYL PLANK FLOORING

JUNIPER

IN ASPEN SPRING



TRANQUIL BEDROOMS

PLUSH CARPETING WITH UNDERLAY FOR ADDED COMFORT

ENERGY EFFICIENT LED LIGHTING

SPACIOUS CLOSETS WITH BUILT-IN WIRE SHELVING

WHITE BLACKOUT ROLLER SHADE WINDOW COVERINGS

SOUNDPROOF ISOLATION: ENSURING UNINTERRUPTED REST AND RELAXATION

VENTILATION SYSTEM FOR FRESH AIR CIRCULATION AND OPTIMAL INDOOR AIR QUALITY

ERGONOMIC DESIGN WHICH MAXIMIZES SPACE AND FUNCTIONALITY

JUNIPER

IN ASPEN SPRING

Please take note that all images, drawings, representations, and visualizations contained within our promotional and informational handout sheets are intended solely for illustrative purposes. These images are not to be construed as warranties, promises, or guarantees of the final product or service. They serve only as a generic guide and are subject to variation. The Developer expressly reserves the right, at its sole discretion, to alter, amend, revise, or discontinue any feature, specification, or characteristic of the product or service at any time and without any obligation to provide prior notice of such changes. Such rights may be exercised for reasons that include but are not limited to product or service improvement, availability of materials, market conditions, or regulatory compliance.



Please take note that all images, drawings, representations, and visualizations contained within our promotional and informational handout sheets are intended solely for illustrative purposes. These images are not to be construed as warranties, promises, or guarantees of the final product or service. They serve only as a generic guide and are subject to variation. The Developer expressly reserves the right, at its sole discretion, to alter, amend, revise, or discontinue any feature, specification, or characteristic of the product or service at any time and without any obligation to provide prior notice of such changes. Such rights may be exercised for reasons that include but are not limited to product or service improvement, availability of materials, market conditions, or regulatory compliance.

JUNIPER

IN ASPEN SPRING



17TH AVENUE

19TH AVENUE

MEET JUNIPER

85TH STREET



**A-TYPE
TOWNHOMES**

FROM 1278 SQ. FT.
2 BED + DEN | 2.5 BATH INCL.
ENSUITE
SINGLE OR TANDEM GARAGE*

**STARTING FROM
\$567,000**

**B-TYPE
TOWNHOMES**

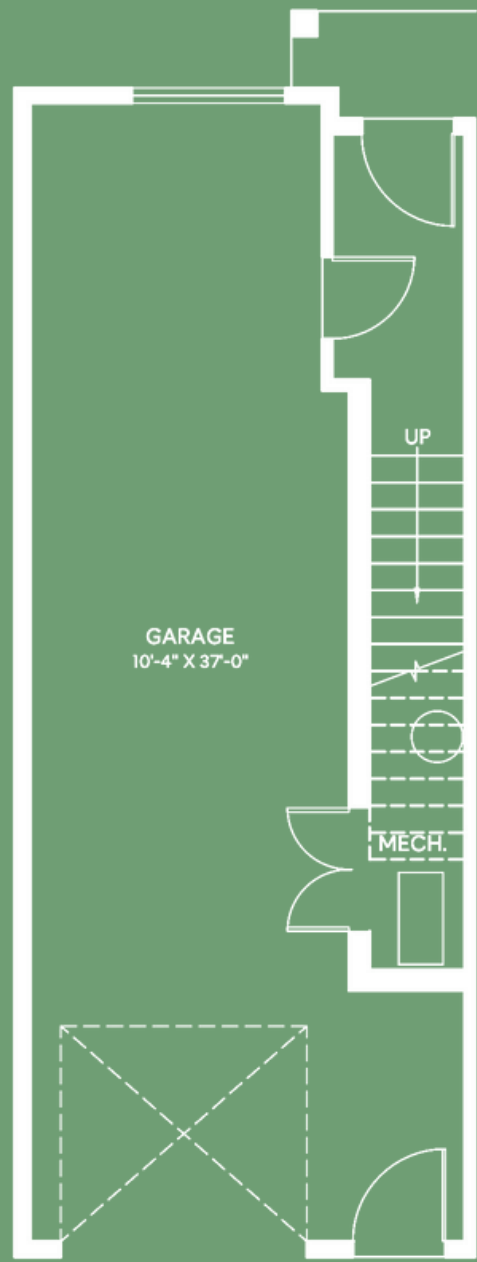
FROM 1463 SQ. FT.
3 BED + DEN | 2.5 BATH INCL.
ENSUITE
SINGLE OR TANDEM GARAGE*

**STARTING FROM
\$620,000**

**MEET OUR
FLOORPLANS**

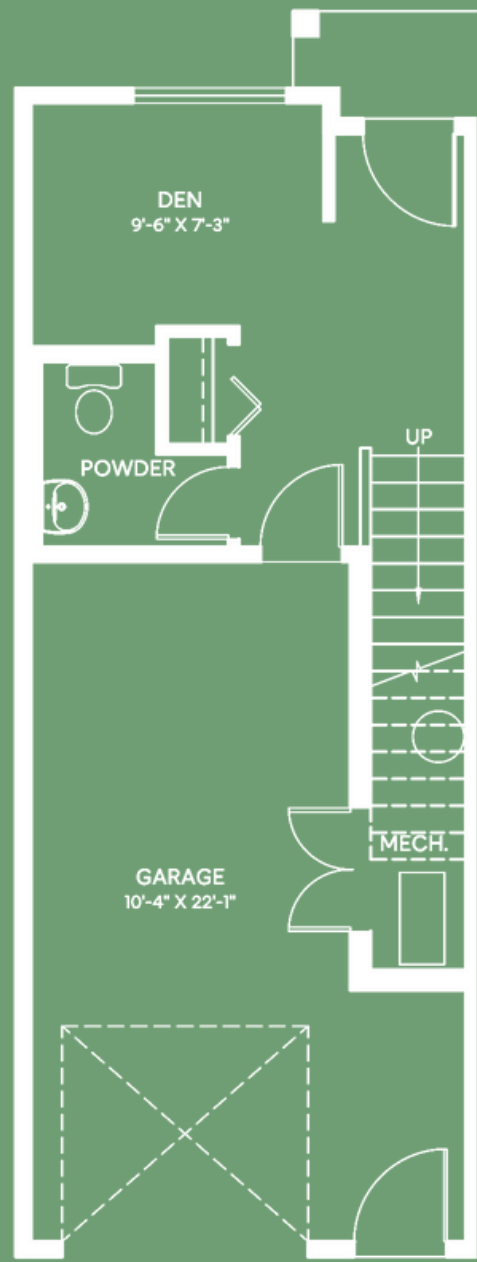
*not available for all units, please see a sales associate for more information.

The information presented in the renderings is for general information purposes only and should not be relied upon for making any decision related to the purchase or lease of any property. The developer reserves the right to modify, revise, or withdraw any or all of the renderings without notice and without obligation.



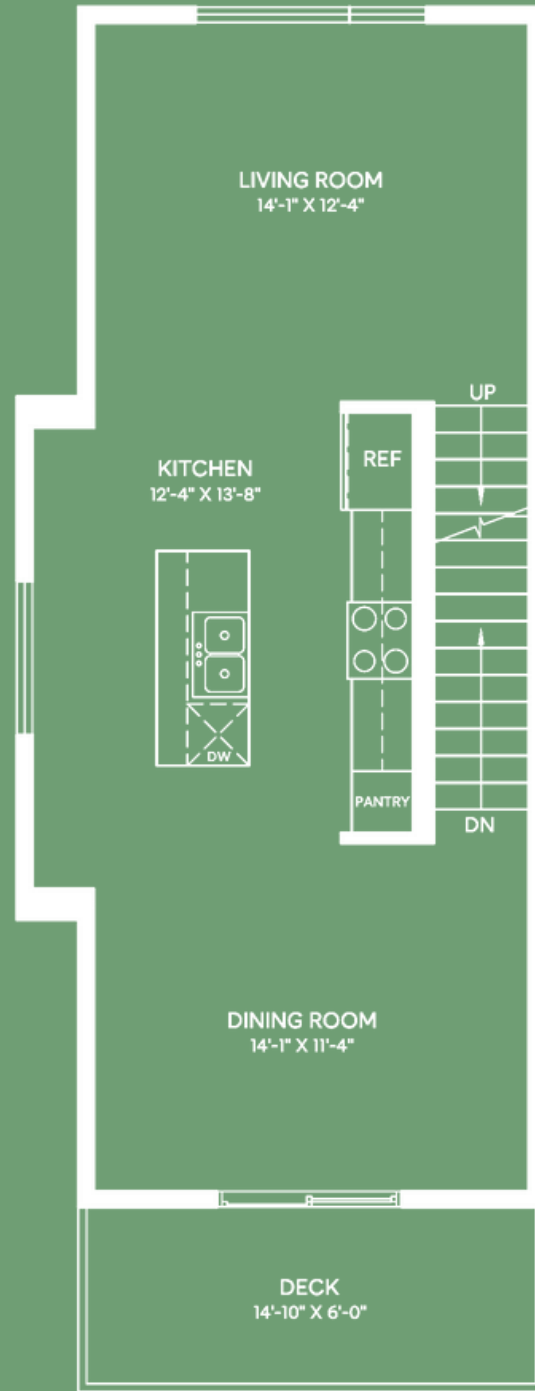
LOWER/ENTRY

GARAGE OPTION
52 sq/ft



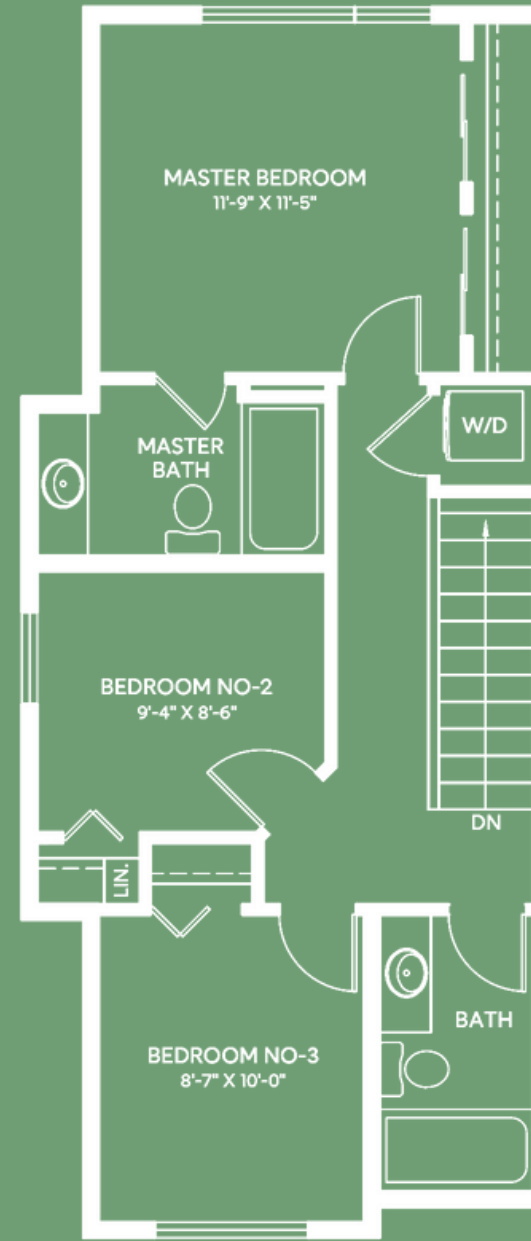
LOWER/ENTRY

DEN OPTION
215 sq/ft



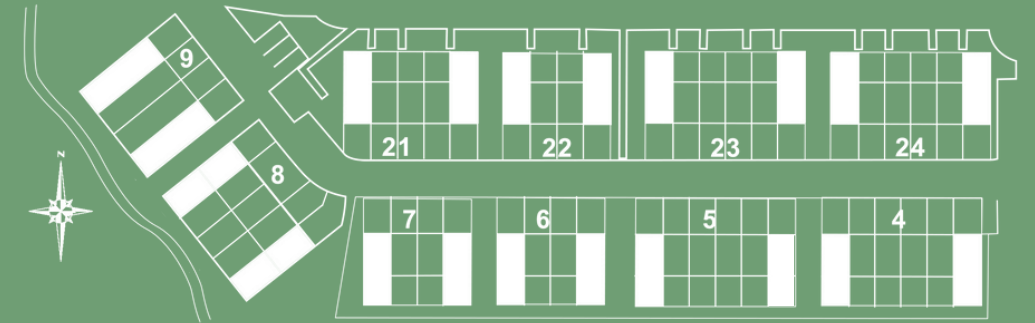
MAIN

538 sq/ft



UPPER

545 sq/ft



HERITAGE TOWNHOME

3 BED + DEN | 2.5 BATH INCL. ENSUITE
1463 SQ. FT.

B

Windows, exterior door, boxout and exterior steps configurations may vary.

B

HERITAGE TOWNHOME

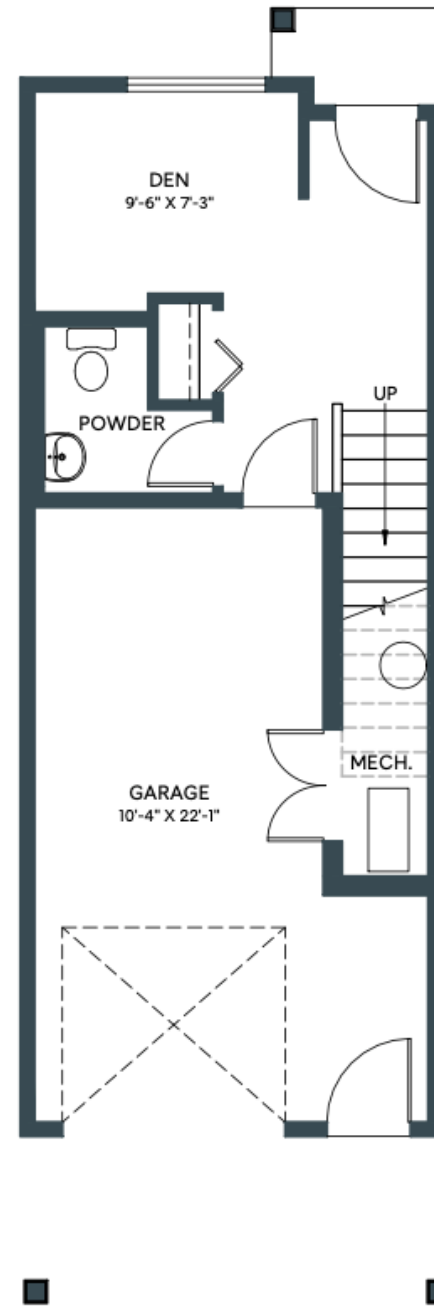
1463 SQ. FT.
3 BED + DEN | 2.5 BATH INCL. ENSUITE

JUNIPER

IN ASPEN SPRING

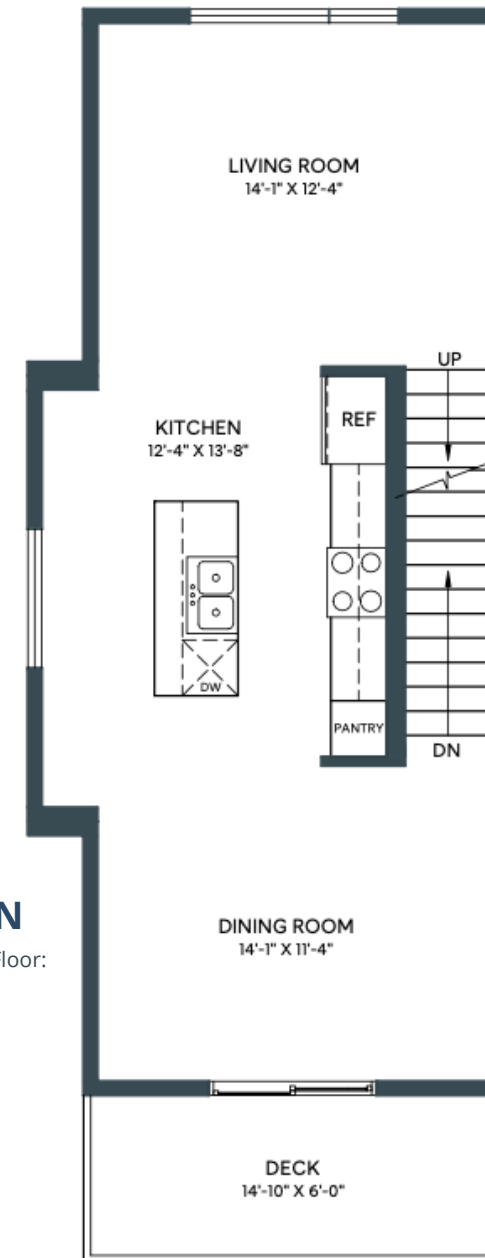
LOWER/ENTRY

Lower Floor: 215 sq/ft



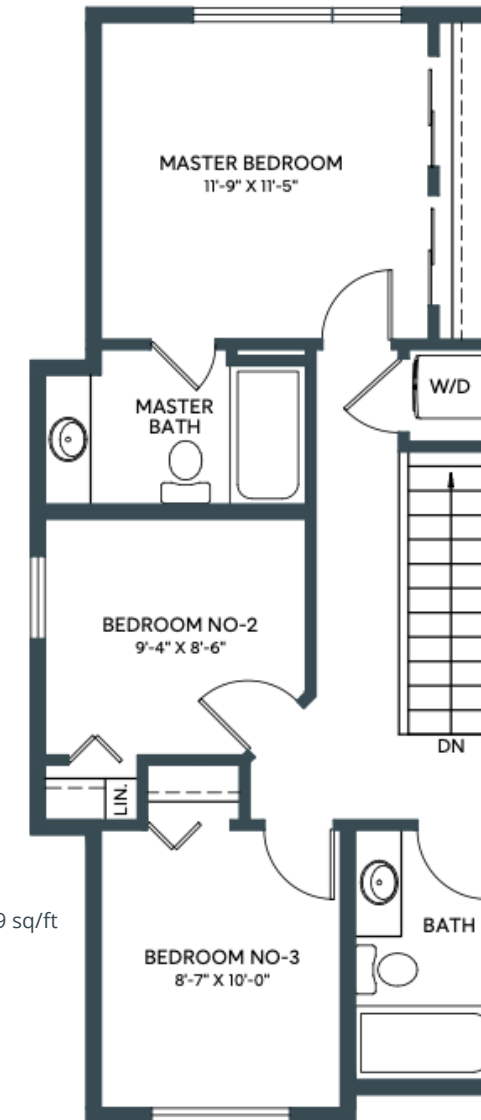
MAIN

Second Floor: 619 sq/ft



UPPER

Third Floor: 629 sq/ft



Windows, exterior door, boxout and exterior steps configurations may vary.

B

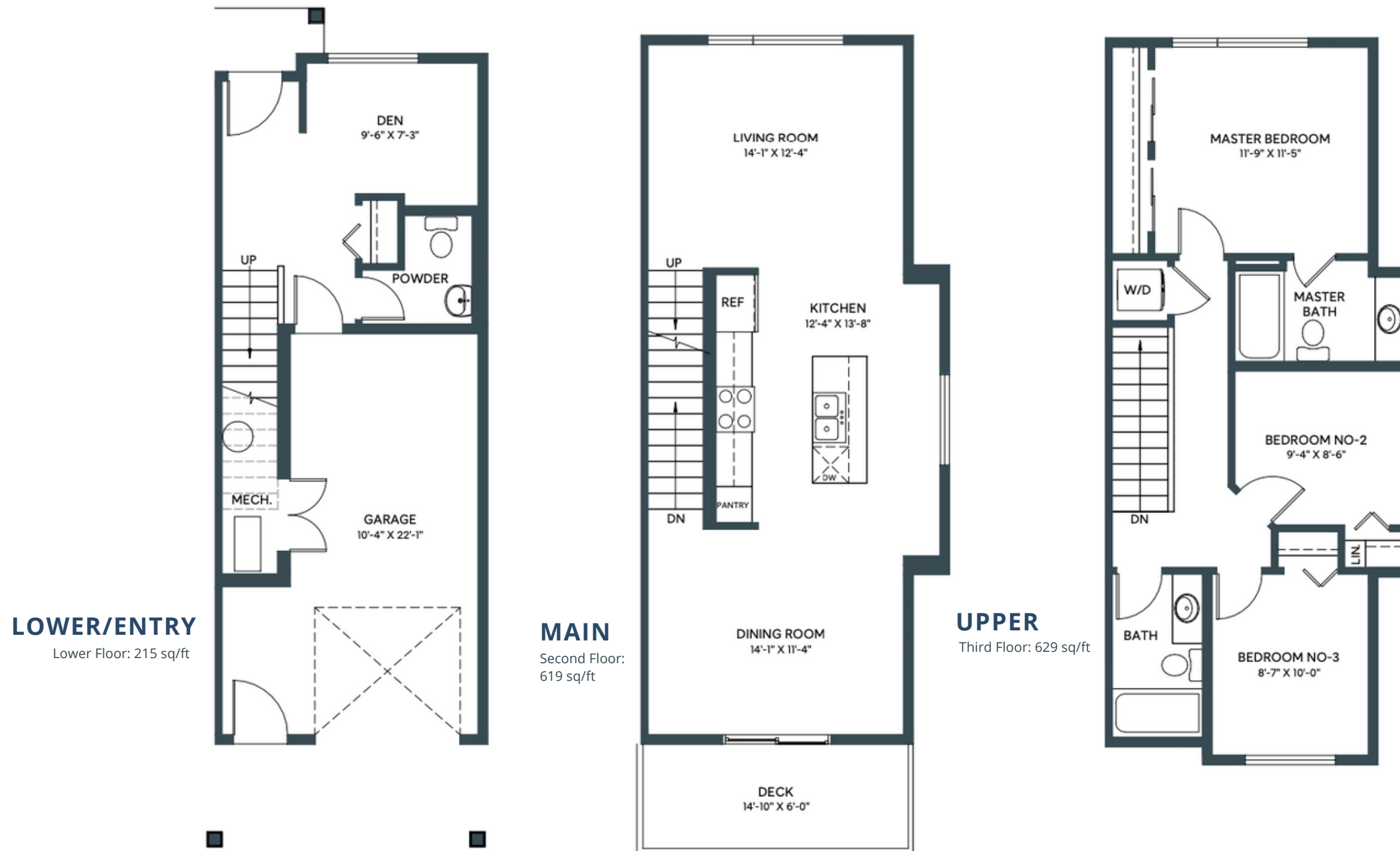
REVERSED

HERITAGE TOWNHOME

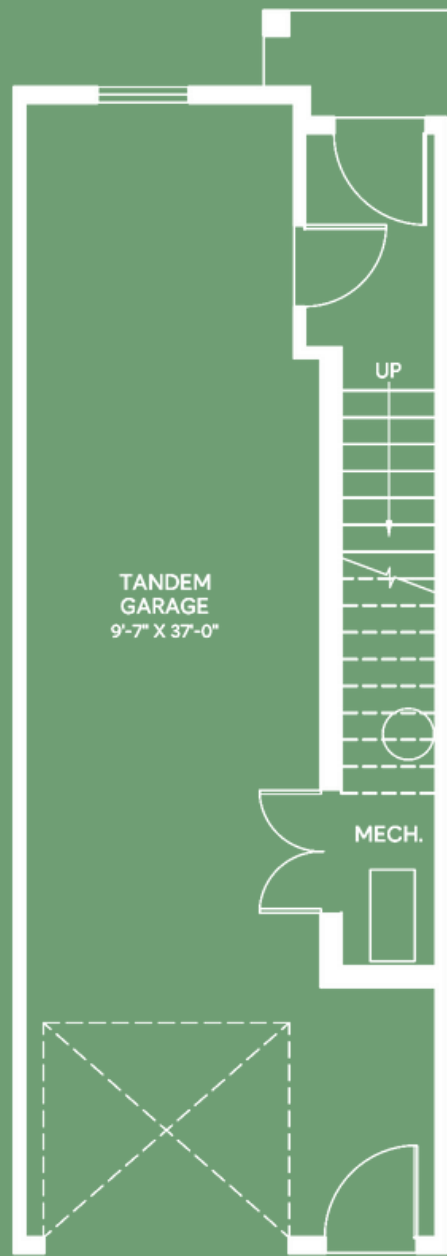
1463 SQ. FT.
3 BED + DEN | 2.5 BATH INCL. ENSUITE

JUNIPER

IN ASPEN SPRING

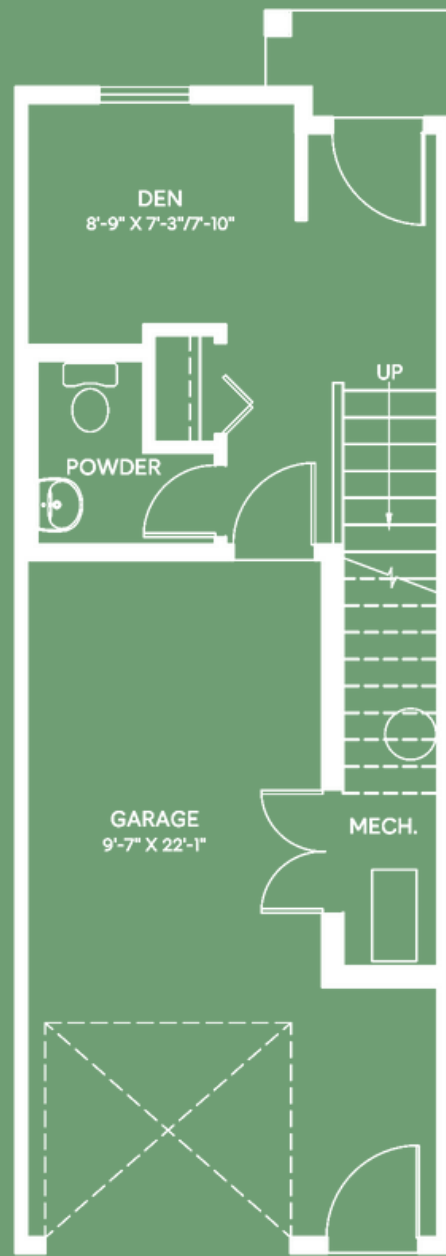


Windows, exterior door, boxout and exterior steps configurations may vary.



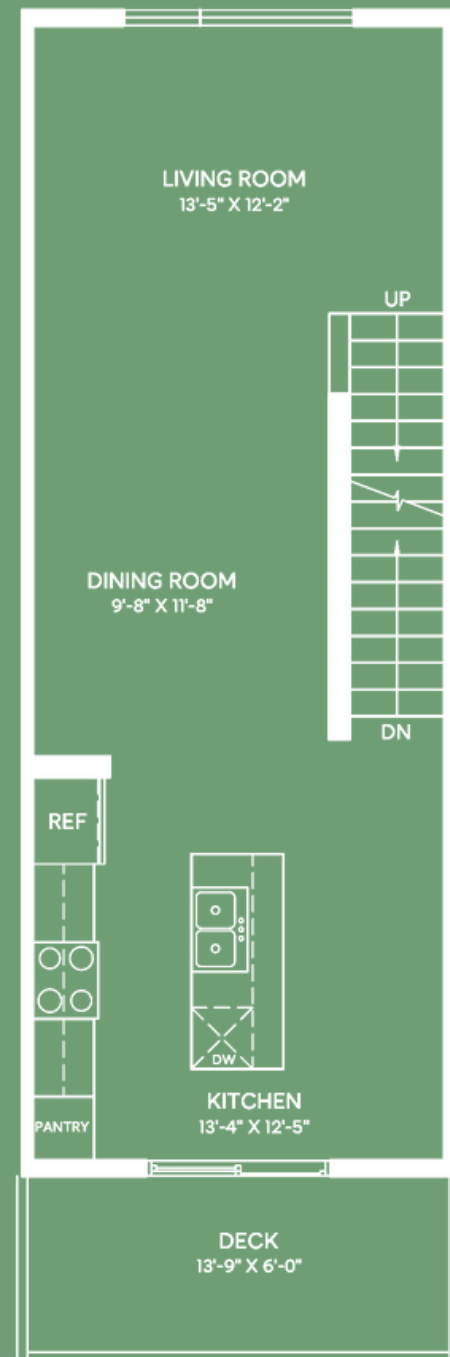
LOWER/ENTRY

GARAGE OPTION
43 sq/ft



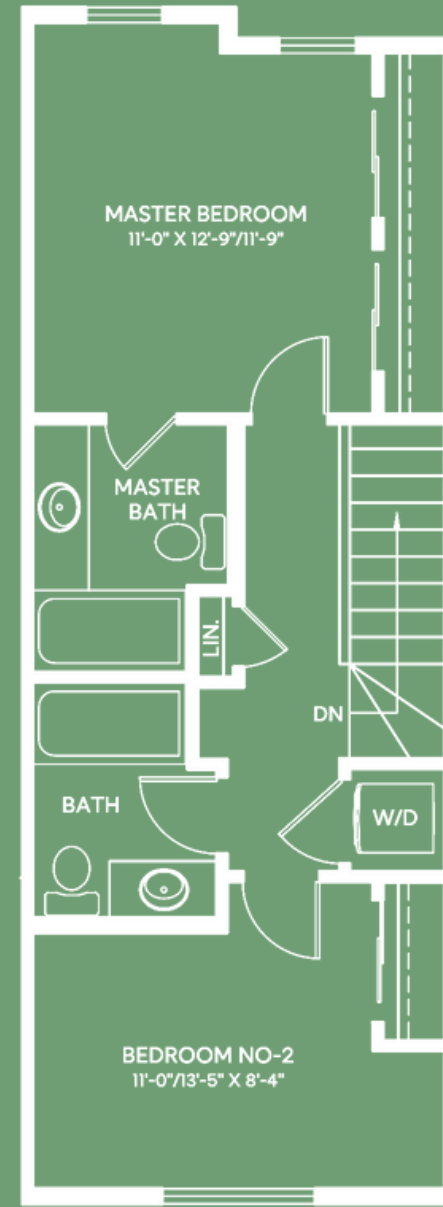
LOWER/ENTRY

DEN OPTION
from 195 sq/ft



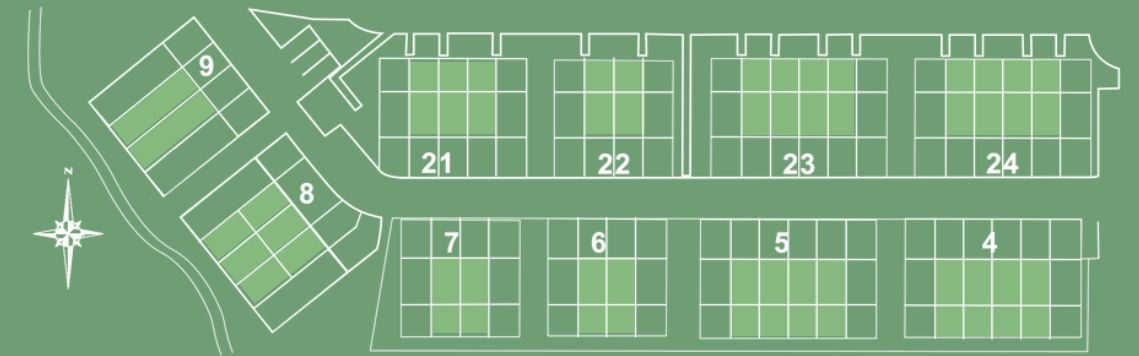
MAIN

from 538 sq/ft



UPPER

from 545 sq/ft



HERITAGE TOWNHOME

2 BED + DEN | 2.5 BATH INCL. ENSUITE
1278 - 1334 SQ. FT.



Windows, exterior door, boxout and exterior steps configurations may vary.

A1

HERITAGE TOWNHOME

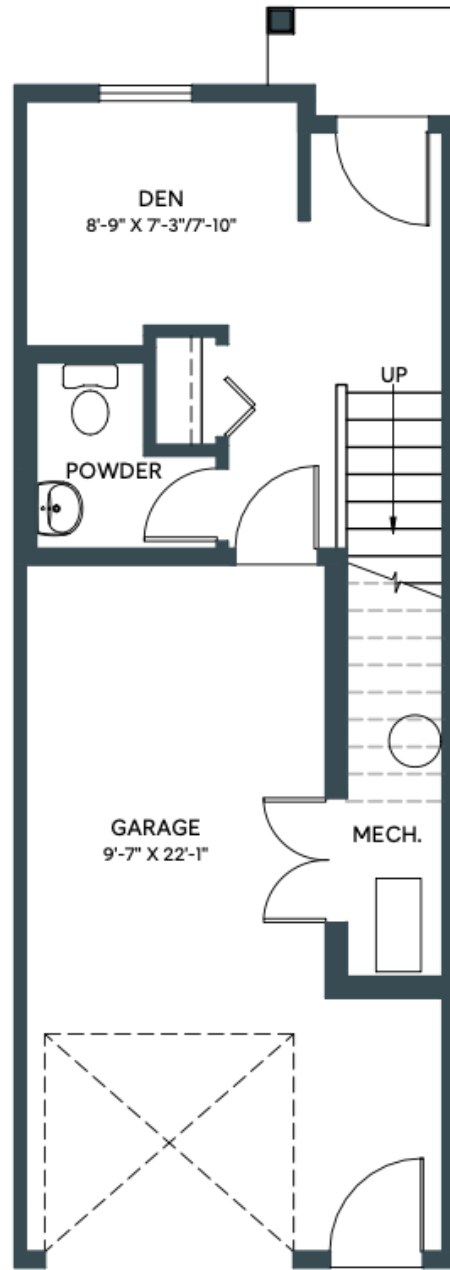
1278 SQ. FT.
2 BED + DEN | 2.5 BATH INCL. ENSUITE

JUNIPER

IN ASPEN SPRING

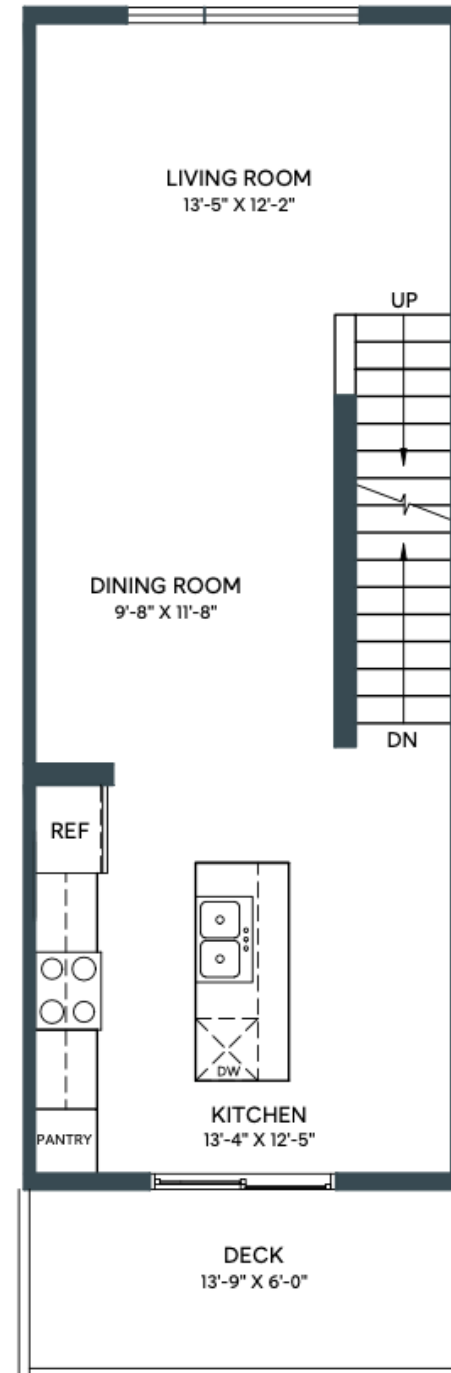
LOWER/ENTRY

Lower Floor: 195 sq/ft



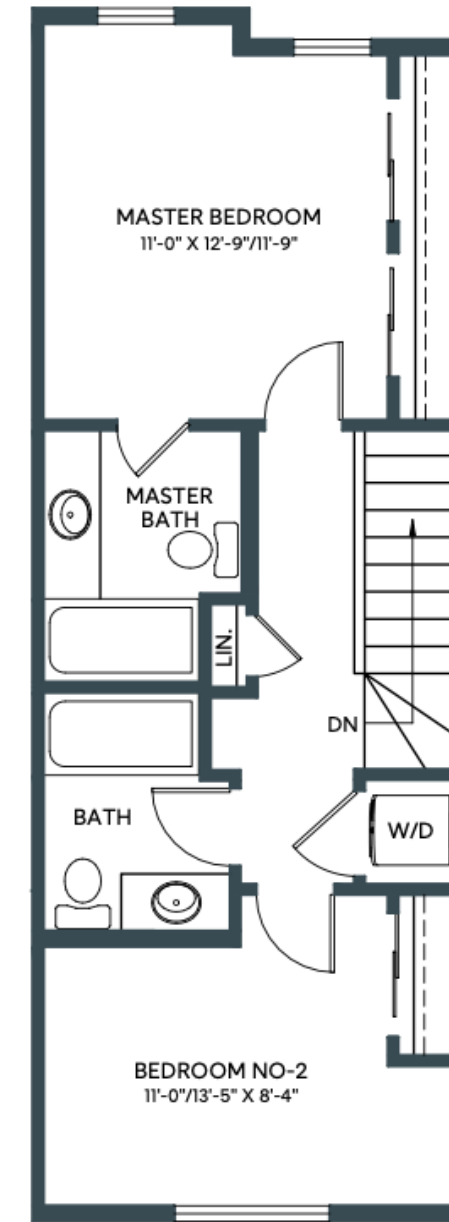
MAIN

Second Floor: 538 sq/ft



UPPER

Third Floor: 545 sq/ft



A2

HERITAGE TOWNHOME

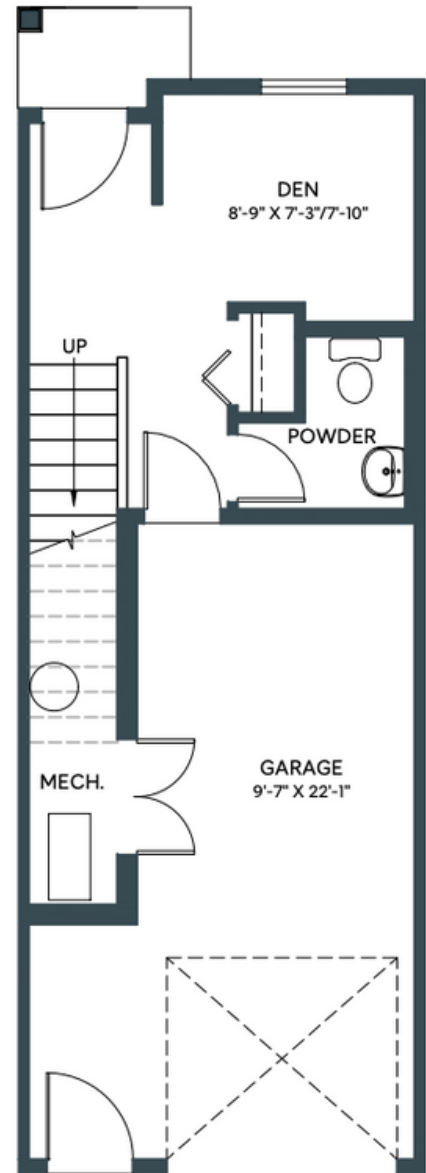
1289 SQ. FT.
2 BED + DEN | 2.5 BATH INCL. ENSUITE

JUNIPER

IN ASPEN SPRING

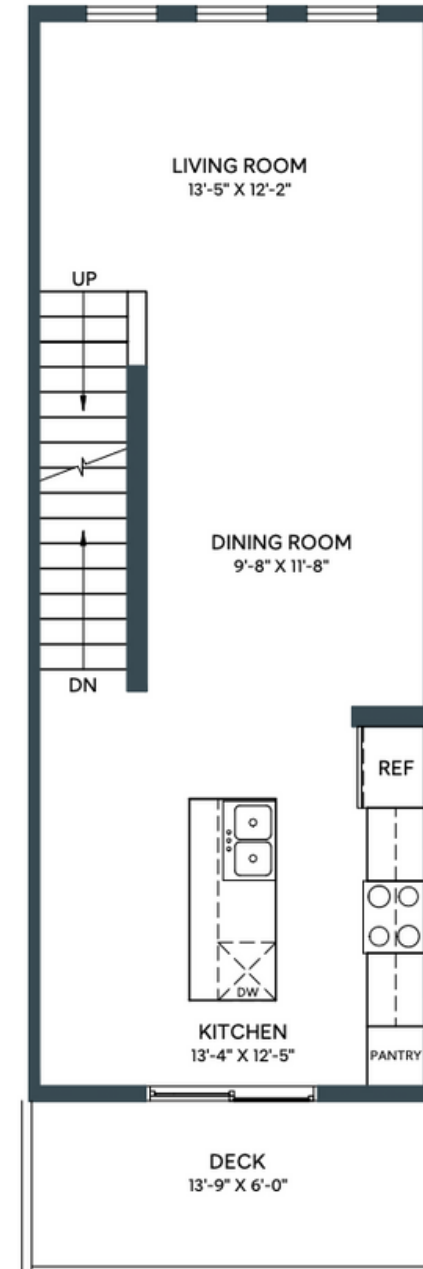
LOWER/ENTRY

Lower Floor: 195 sq/ft



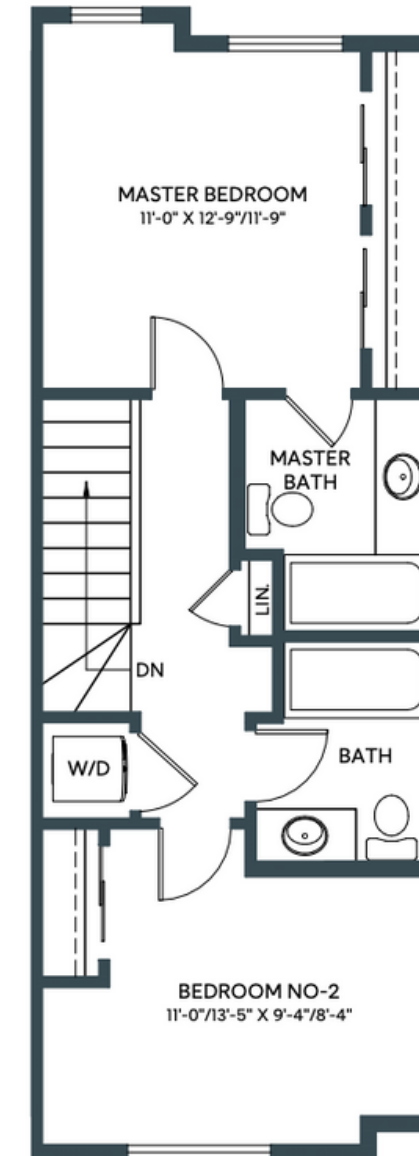
MAIN

Second Floor: 538 sq/ft



UPPER

Third Floor: 556 sq/ft



A3

HERITAGE TOWNHOME

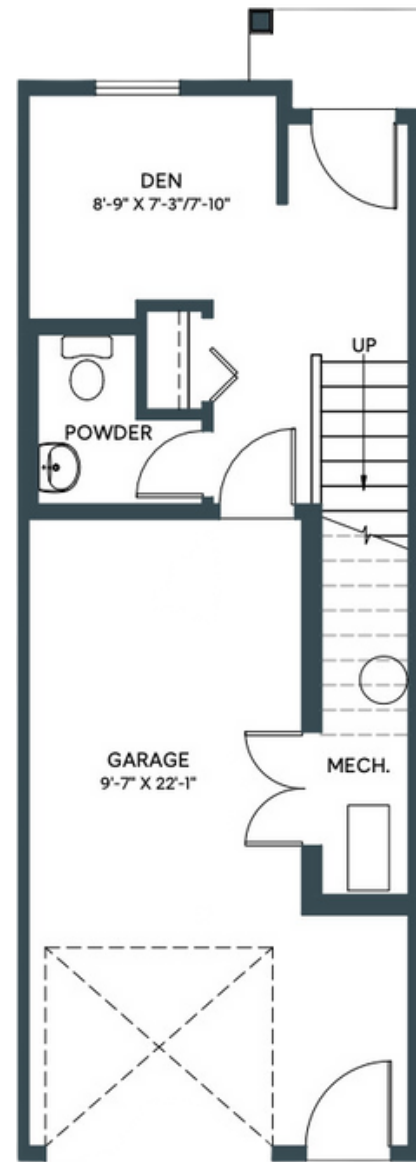
1300 SQ. FT.
2 BED + DEN | 2.5 BATH INCL. ENSUITE

JUNIPER

IN ASPEN SPRING

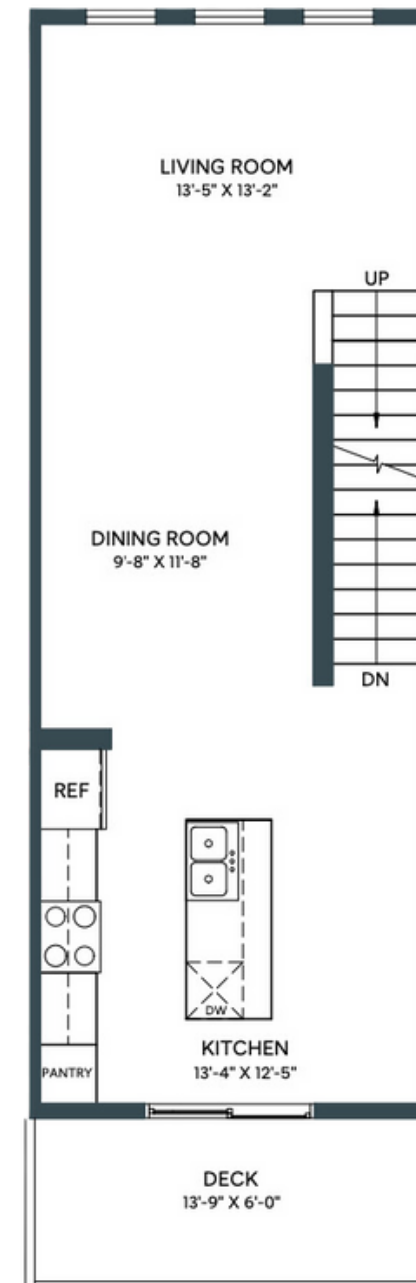
LOWER/ENTRY

Lower Floor: 195 sq/ft



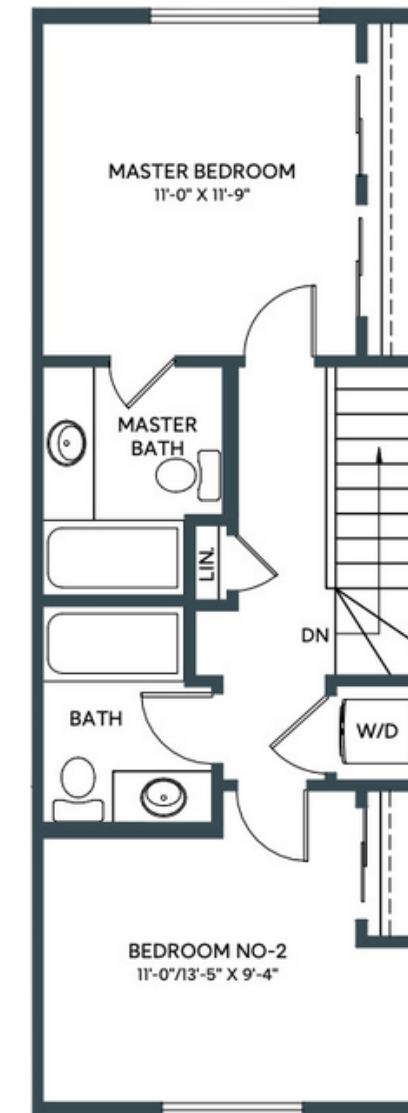
MAIN

Second Floor: 553 sq/ft



UPPER

Third Floor: 552 sq/ft



A4

HERITAGE TOWNHOME

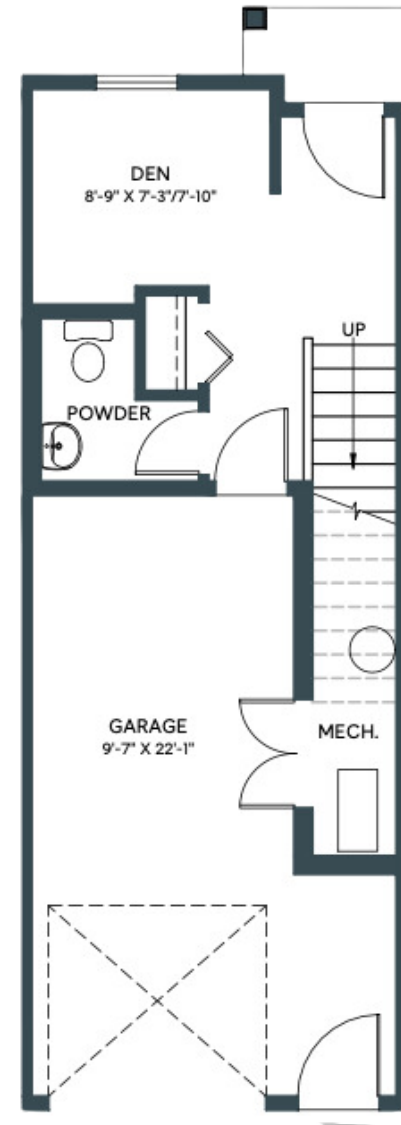
1301 SQ. FT.
2 BED + DEN | 2.5 BATH INCL. ENSUITE

JUNIPER

IN ASPEN SPRING

LOWER/ENTRY

Lower Floor: 195 sq/ft



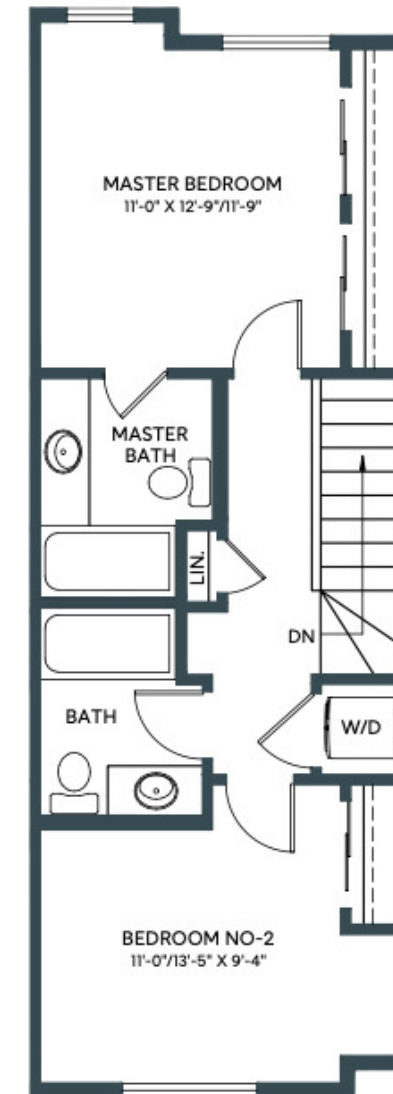
MAIN

Second Floor: 550 sq/ft



UPPER

Third Floor: 556 sq/ft



A5

HERITAGE TOWNHOME

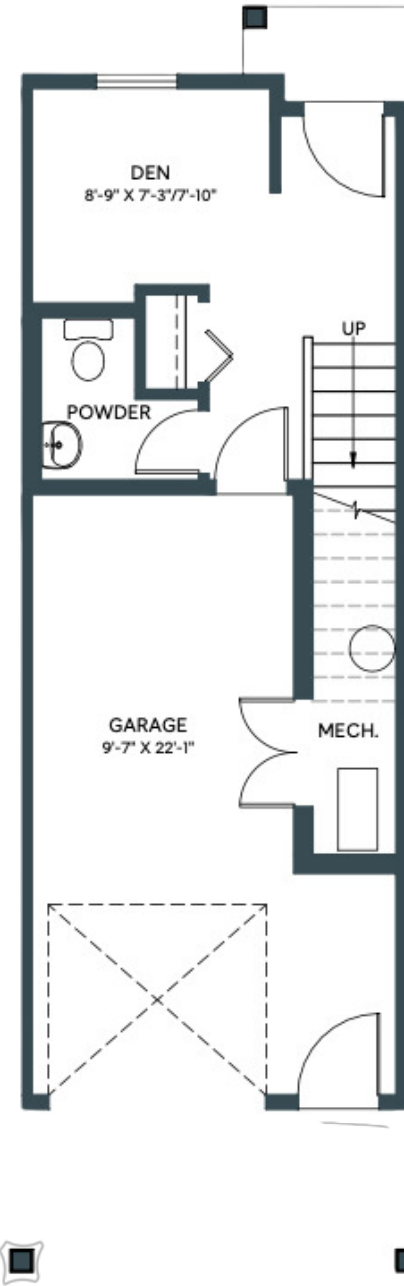
1307 SQ. FT.
2 BED + DEN | 2,5 BATH INCL. ENSUITE

JUNIPER

IN ASPEN SPRING

LOWER/ENTRY

Lower Floor: 195 sq/ft



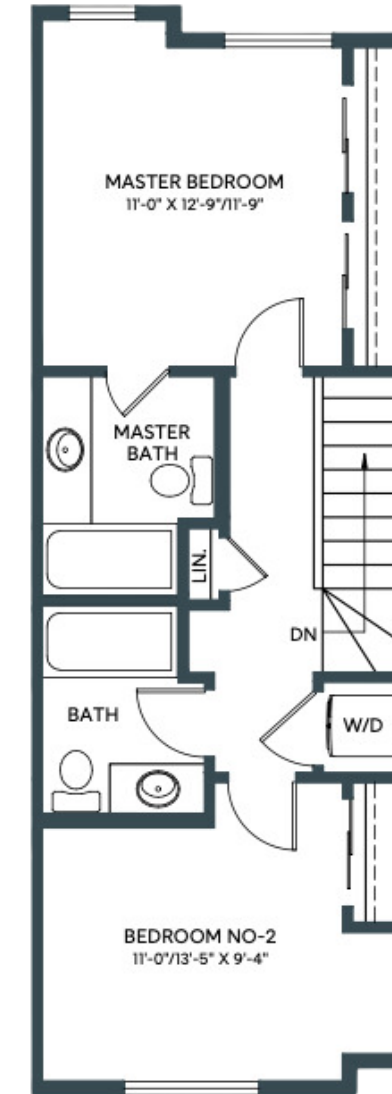
MAIN

Second Floor: 553 sq/ft



UPPER

Third Floor: 559 sq/ft



A6

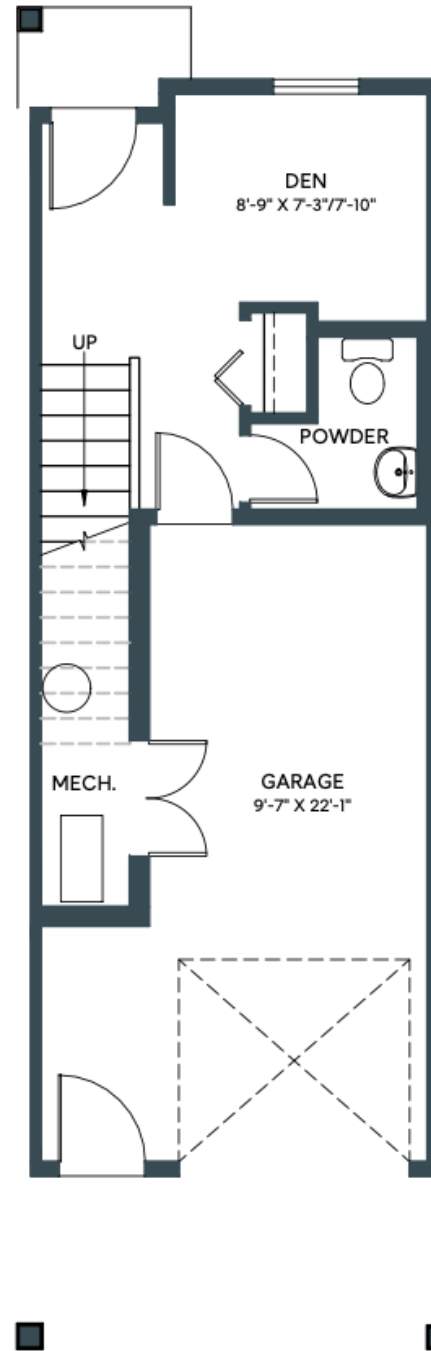
HERITAGE TOWNHOME

1320 SQ. FT.
2 BED + DEN | 2.5 BATH INCL. ENSUITE

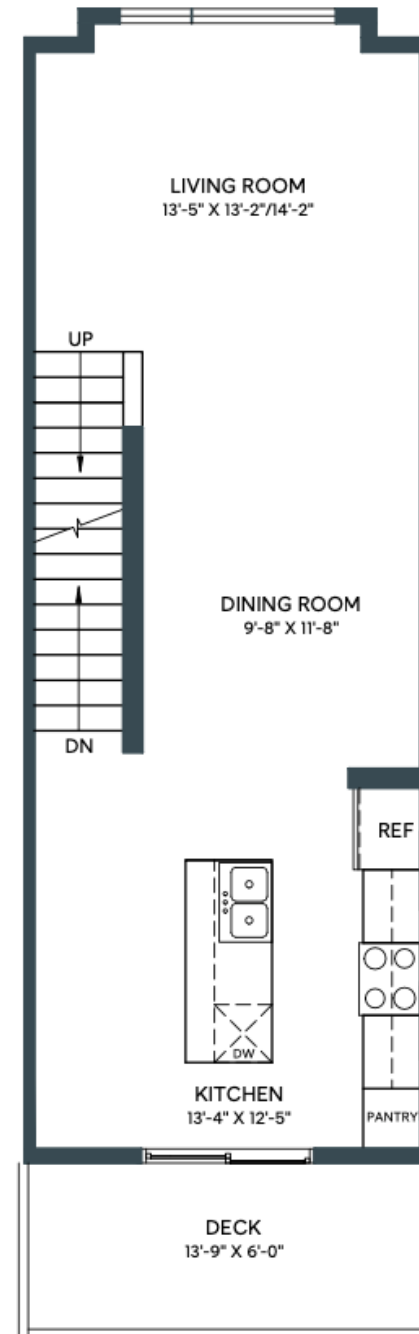
JUNIPER

IN ASPEN SPRING

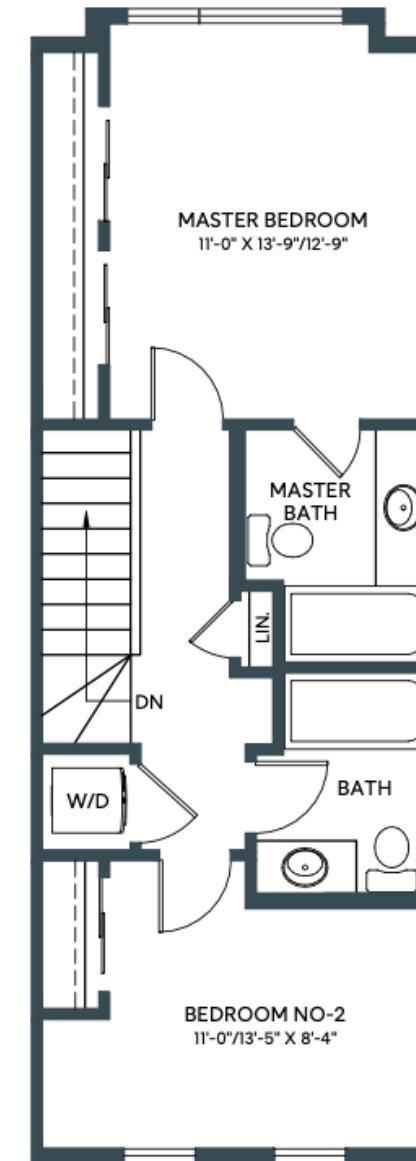
LOWER/ENTRY
Lower Floor: 195 sq/ft



MAIN
Second Floor: 563 sq/ft



UPPER
Third Floor: 562 sq/ft



Windows, exterior door, boxout and exterior steps configurations may vary.

A6

HERITAGE TOWNHOME

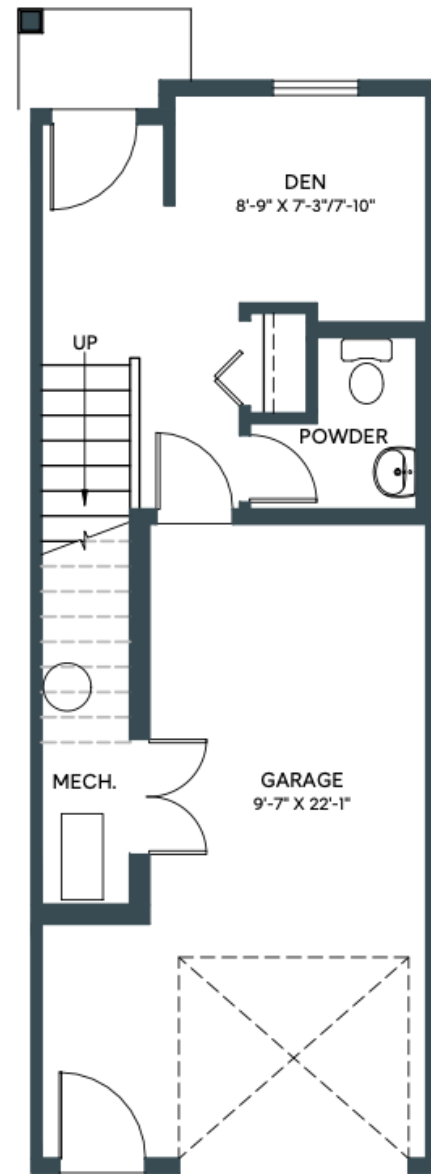
1320 SQ. FT.
2 BED + DEN | 2.5 BATH INCL. ENSUITE

JUNIPER

IN ASPEN SPRING

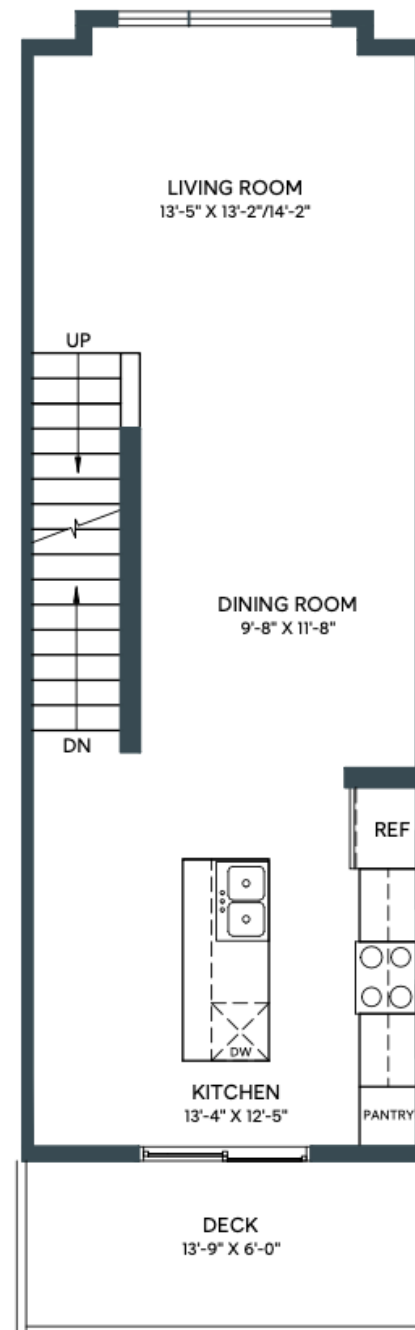
LOWER/ENTRY

Lower Floor: 195 sq/ft



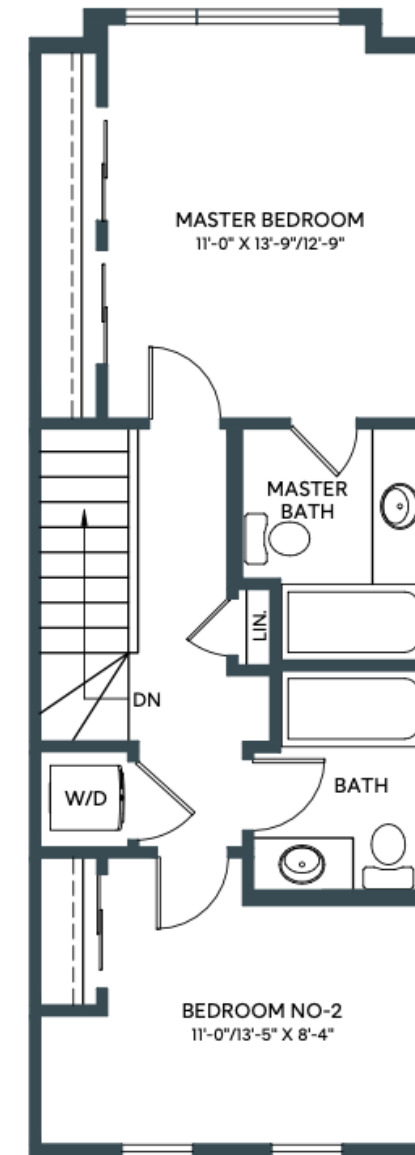
MAIN

Second Floor: 563 sq/ft



UPPER

Third Floor: 562 sq/ft



Windows, exterior door, boxout and exterior steps configurations may vary.

A8

HERITAGE TOWNHOME

1329 SQ. FT.
2 BED + DEN | 2.5 BATH INCL. ENSUITE

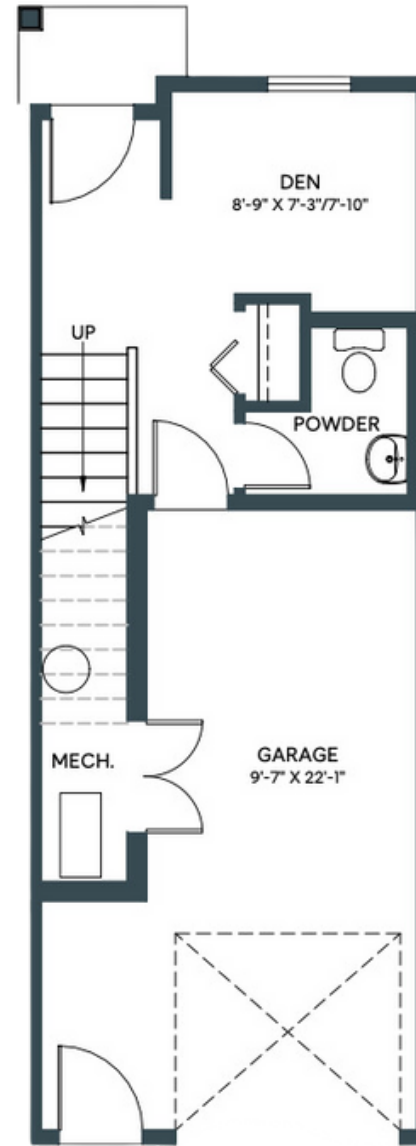
JUNIPER

IN ASPEN SPRING

BACKING ONTO
RESERVE

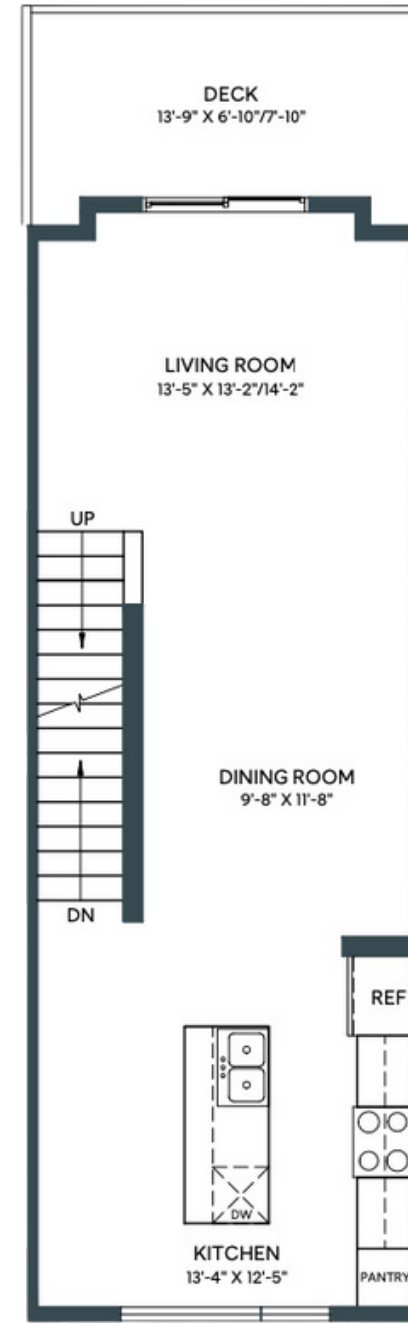
LOWER/ENTRY

Lower Floor: 195 sq/ft



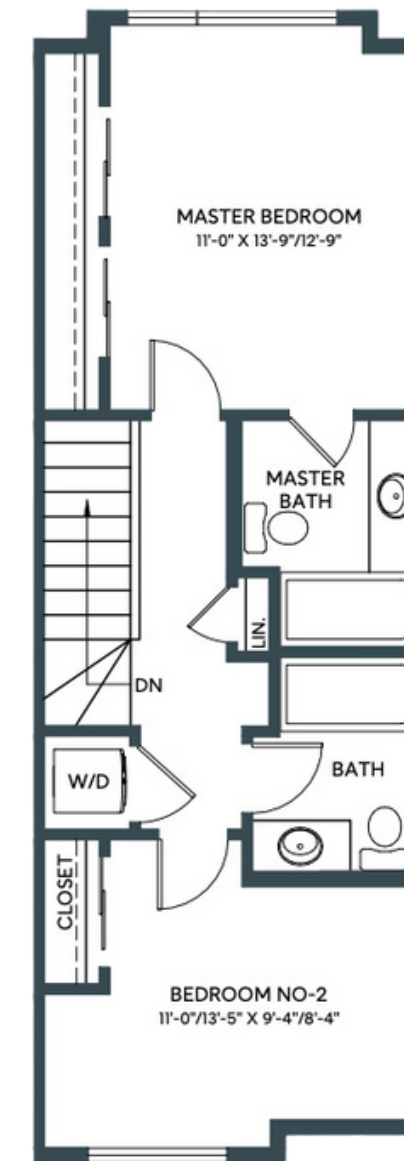
MAIN

Second Floor: 563 sq/ft



UPPER

Third Floor: 571 sq/ft



Windows, exterior door, boxout and exterior steps configurations may vary.

A9

HERITAGE TOWNHOME

1334 SQ. FT.
2 BED + DEN | 2,5 BATH INCL. ENSUITE

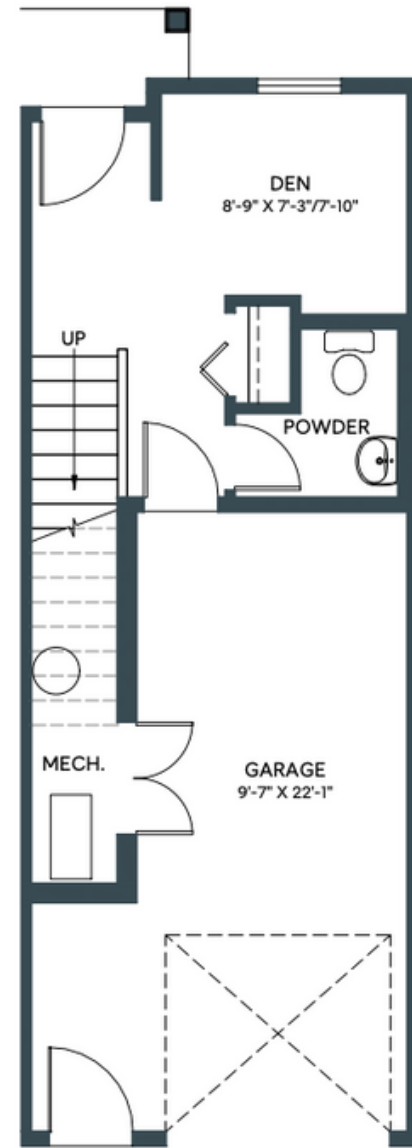
JUNIPER

IN ASPEN SPRING

BACKING ONTO
RESERVE

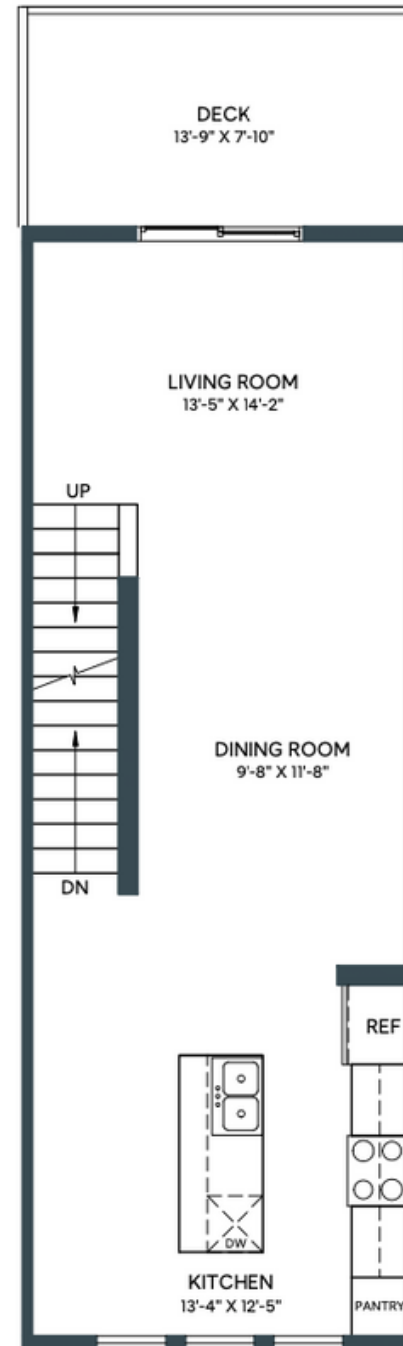
LOWER/ENTRY

Lower Floor: 195 sq/ft



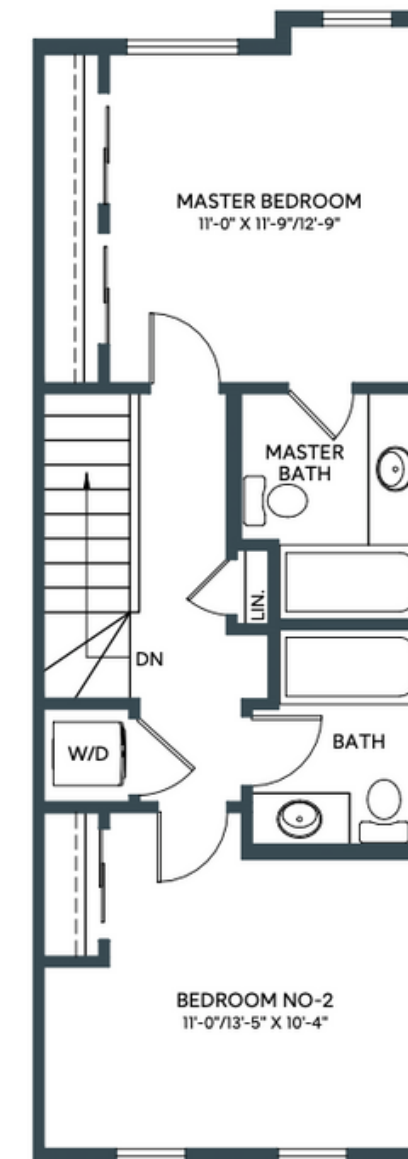
MAIN

Second Floor: 567 sq/ft



UPPER

Third Floor: 572 sq/ft



BOOK YOUR
MEETING TODAY

403 888 8491

