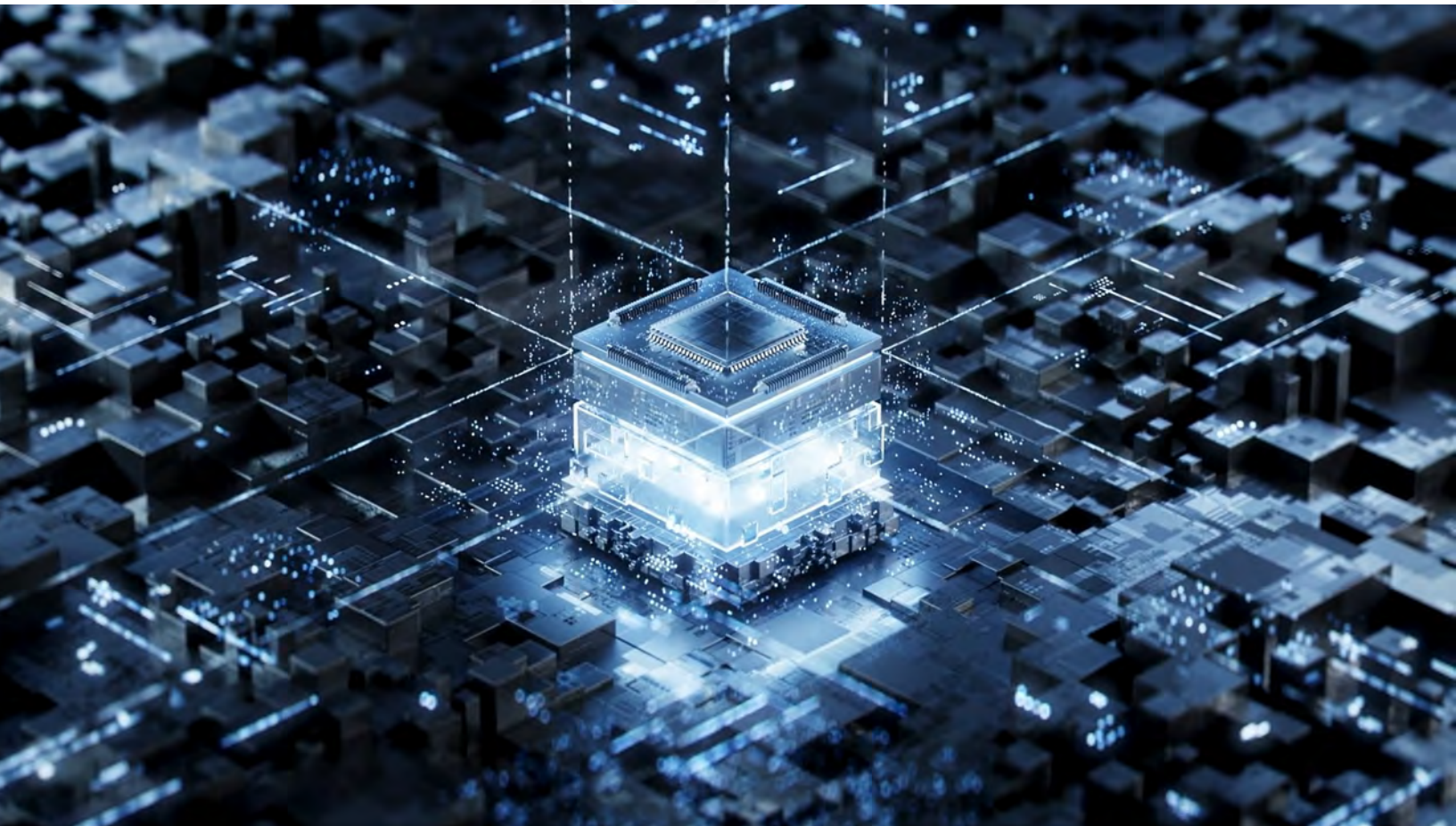


**Solid State Storage Expert**

Focus on storage



#### S101



<b>Form factor</b>	2.5"					
<b>Interface</b>	SATA 3.0 6Gbps					
<b>Capacity</b>	128GB	256GB	512GB	1TB	2TB	4TB
<b>Seq Read</b>	500MB/s	520MB/s	520MB/s	520MB/s	520MB/s	500MB/s
<b>Seq Write</b>	400MB/s	450MB/s	450MB/s	450MB/s	450MB/s	400MB/s
<b>TBW</b>	40	80	160	320	640	1280
<b>Temp.OP</b>	0°C~+70°C					
<b>Dimenslons</b>	100*70*7mm					

#### S102



<b>Form factor</b>	2.5"					
<b>Interface</b>	SATA 3.0 6Gbps					
<b>Capacity</b>	128GB	256GB	512GB	1TB	2TB	
<b>Seq Read</b>	500MB/s	540MB/s	540MB/s	540MB/s	540MB/s	
<b>Seq Write</b>	430MB/s	480MB/s	480MB/s	480MB/s	480MB/s	
<b>TBW</b>	80	160	320	640	1280	
<b>Temp.OP</b>	0°C~+70°C					
<b>Dimenslons</b>	100*70*7mm					

#### S102 Pro



<b>Form factor</b>	2.5"					
<b>Interface</b>	SATA 3.0 6Gbps					
<b>Capacity</b>	128GB	256GB	512GB	1TB	2TB	
<b>Seq Read</b>	520MB/s	560MB/s	560MB/s	560MB/s	560MB/s	
<b>Seq Write</b>	450MB/s	500MB/s	500MB/s	500MB/s	500MB/s	
<b>TBW</b>	80	160	320	640	1280	
<b>Temp.OP</b>	0°C~+70°C					
<b>Dimenslons</b>	100*70*7mm					

#### S301 Pro



<b>Form factor</b>	mSATA					
<b>Interface</b>	SATA 3.0 6Gbps					
<b>Capacity</b>	64GB	128GB	256GB	512GB	1TB	2TB
<b>Seq Read</b>	300MB/s	520MB/s	560MB/s	560MB/s	560MB/s	560MB/s
<b>Seq Write</b>	250MB/s	450MB/s	500MB/s	500MB/s	500MB/s	500MB/s
<b>TBW</b>	40	80	160	320	640	1280
<b>Temp.OP</b>	0°C~+70°C					
<b>Dimenslons</b>	50.8*29.8*3.7mm					

#### S201 Pro



<b>Form factor</b>	M.2 SATA 2280					
<b>Interface</b>	SATA 3.0 6Gbps					
<b>Capacity</b>	64GB	128GB	256GB	512GB	1TB	2TB
<b>Seq Read</b>	300MB/s	520MB/s	560MB/s	560MB/s	560MB/s	560MB/s
<b>Seq Write</b>	250MB/s	450MB/s	500MB/s	500MB/s	500MB/s	500MB/s
<b>TBW</b>	40	80	160	320	640	1280
<b>Temp.OP</b>	0°C~+70°C					
<b>Dimenslons</b>	80*22*3.7mm					

...  
Ongoing research  
and development

### S500



<b>Form factor</b>	M.2 NVMe 2280				
<b>Interface</b>	PCIe3.0x4				
<b>Capacity</b>	128GB	256GB	500GB	1TB	2TB
<b>Seq Read</b>	1130MB/s	1950MB/s	2100MB/s	2100MB/s	2100MB/s
<b>Seq Write</b>	900MB/s	1000MB/s	1300MB/s	1800MB/s	1800MB/s
<b>TBW</b>	64	128	256	512	1024
<b>Temp.OP</b>	0°C~+70°C				
<b>Dimensions</b>	80*22*2.4mm				

### S500 Pro



<b>Form factor</b>	M.2 NVMe 2280			
<b>Interface</b>	PCIe3.0x4			
<b>Capacity</b>	256GB	512GB	1TB	2TB
<b>Seq Read</b>	3500MB/s	3500MB/s	3500MB/s	3500MB/s
<b>Seq Write</b>	1350MB/s	2720MB/s	3200MB/s	3100MB/s
<b>TBW</b>	160	320	640	1280
<b>Temp.OP</b>	0°C~+70°C			
<b>Dimensions</b>	80*22*3.7mm			

### S501



<b>Form factor</b>	M.2 NVMe 2280				
<b>Interface</b>	PCIe3.0x4				
<b>Capacity</b>	128GB	256GB	512GB	1TB	2TB
<b>Seq Read</b>	1520MB/s	3050MB/s	3200MB/s	3200MB/s	2920MB/s
<b>Seq Write</b>	1400MB/s	2100MB/s	2100MB/s	2000MB/s	1730MB/s
<b>TBW</b>	64	128	256	512	1024
<b>Temp.OP</b>	0°C~+70°C				
<b>Dimensions</b>	80*22*3.7mm				

### S501 Pro



<b>Form factor</b>	M.2 NVMe 2280				
<b>Interface</b>	PCIe3.0x4				
<b>Capacity</b>	128GB	256GB	512GB	1TB	2TB
<b>Seq Read</b>	1520MB/s	3050MB/s	3200MB/s	3200MB/s	2920MB/s
<b>Seq Write</b>	1400MB/s	2100MB/s	2100MB/s	2000MB/s	1730MB/s
<b>TBW</b>	64	128	256	512	1024
<b>Temp.OP</b>	0°C~+70°C				
<b>Dimensions</b>	80*22*3.7mm				

### S542



<b>Form factor</b>	M.2 NVMe 2242			
<b>Interface</b>	PCIe3.0x4			
<b>Capacity</b>	256GB	512GB	1TB	2TB
<b>Seq Read</b>	3500MB/s	3500MB/s	3500MB/s	3500MB/s
<b>Seq Write</b>	1350MB/s	2720MB/s	3200MB/s	3100MB/s
<b>TBW</b>	160	320	640	1280
<b>Temp.OP</b>	0°C~+70°C			
<b>Dimensions</b>	42*22*3.7mm			

### S530



<b>Form factor</b>	M.2 NVMe 2230			
<b>Interface</b>	PCIe3.0x4			
<b>Capacity</b>	256GB	512GB	1TB	2TB
<b>Seq Read</b>	2800MB/s	3200MB/s	3200MB/s	3200MB/s
<b>Seq Write</b>	1200MB/s	2000MB/s	2000MB/s	2000MB/s
<b>TBW</b>	160	320	640	1280
<b>Temp.OP</b>	0°C~+70°C			
<b>Dimensions</b>	30*22*3.7mm			

#### S660



<b>Form factor</b>	M.2 NVMe 2280		
<b>Interface</b>	PCIe4.0x4		
<b>Capacity</b>	500GB	1TB	2TB
<b>Seq Read</b>	5000MB/s	5000MB/s	4800MB/s
<b>Seq Write</b>	2650MB/s	4500MB/s	4500MB/s
<b>TBW</b>	320	640	1280
<b>Temp.OP</b>	0°C~+70°C		
<b>Dimensions</b>	80*22*3.7mm /80*24.3*9.4mm		

#### S770



<b>Form factor</b>	M.2 NVMe 2280				
<b>Interface</b>	PCIe4.0x4				
<b>Capacity</b>	500GB	1TB	2TB	4TB	8TB
<b>Seq Read</b>	7400MB/s	7400MB/s	7400MB/s	7400MB/s	7300MB/s
<b>Seq Write</b>	2750MB/s	5400MB/s	6800MB/s	6450MB/s	7000MB/s
<b>TBW</b>	320	640	1280	2560	4800
<b>Temp.OP</b>	0°C~+70°C				
<b>Dimensions</b>	80*22*3.7mm /80*24.6*11.3mm				

#### S880



<b>Form factor</b>	M.2 NVMe 2280		
<b>Interface</b>	PCIe4.0x4		
<b>Capacity</b>	500GB	1TB	2TB
<b>Seq Read</b>	7000MB/s	7450MB/s	7450MB/s
<b>Seq Write</b>	4000MB/s	6600MB/s	6750MB/s
<b>TBW</b>	320	640	1280
<b>Temp.OP</b>	0°C~+70°C		
<b>Dimensions</b>	80*22*3.7mm		

#### S642



<b>Form factor</b>	M.2 NVMe 2242			
<b>Interface</b>	PCIe4.0x4			
<b>Capacity</b>	250GB	500GB	1TB	2TB
<b>Seq Read</b>	4500MB/s	4700MB/s	4700MB/s	4700MB/s
<b>Seq Write</b>	1500MB/s	3800MB/s	4000MB/s	4000MB/s
<b>TBW</b>	160	320	640	1280
<b>Temp.OP</b>	0°C~+70°C			
<b>Dimensions</b>	22*42*3.7mm			

#### S630



<b>Form factor</b>	M.2 NVMe 2230			
<b>Interface</b>	PCIe4.0x4			
<b>Capacity</b>	250GB	500GB	1TB	2TB
<b>Seq Read</b>	4500MB/s	4700MB/s	4700MB/s	4700MB/s
<b>Seq Write</b>	1500MB/s	3800MB/s	4000MB/s	4000MB/s
<b>TBW</b>	160	320	640	1280
<b>Temp.OP</b>	0°C~+70°C			
<b>Dimensions</b>	30*22*3.7mm			

...  
Ongoing research  
and development

## M.2 PCIE 5.0

### S900



<b>Form factor</b>	M.2 NVMe 2280	
<b>Interface</b>	PCIe5.0x4	
<b>Capacity</b>	1TB	2TB
<b>Seq Read</b>	9500 MB/s	10000 MB/s
<b>Seq Write</b>	8500 MB/s	10000 MB/s
<b>TBW</b>	700	1400
<b>Temp.OP</b>	0°C~+70°C	
<b>Dimensions</b>	80*22*3.7mm /80*24.5*10.5mm	

### S900 Pro



<b>Form factor</b>	M.2 NVMe 2280	
<b>Interface</b>	PCIe5.0x4	
<b>Capacity</b>	1TB	2TB
<b>Seq Read</b>	12000 MB/s	12000 MB/s
<b>Seq Write</b>	11000 MB/s	11000 MB/s
<b>TBW</b>	700	1400
<b>Temp.OP</b>	0°C~+70°C	
<b>Dimensions</b>	80*22*3.7mm /80*24.5*10.5mm	

...  
Ongoing research  
and development

**SPLK<sup>Tech</sup>** 3 years Warranty

**SSD 900 PRO**

**M.2 NVME PCIe 5**

Read up to **12GB/s**

COMPUTER & PLAYSTATION

**P102**



**Capacity:** 256GB/512GB/1TB/2TB  
**Interface:** Type C USB3.2 Gen2  
**Material:** Plastic+Metal  
**Performance:** Read:Up to 550MB/s  
 Write:Up to 480MB/s  
**Dimensions:** 76\*46\*8mm

**p105**



**Capacity:** 256GB/512GB/1TB/2TB  
**Interface:** Type C USB3.2 Gen2  
**Material:** Plastic+Metal  
**Performance:** Read:Up to 520MB/s  
 Write:Up to 400MB/s  
**Dimensions:** 90\*53.4\*9.6mm

**p105 Pro**



**Capacity:** 256GB/512GB/1TB/2TB  
**Interface:** Type C USB3.2 Gen2  
**Material:** Plastic+Metal  
**Performance:** Read:Up to 520MB/s  
 Write:Up to 400MB/s  
**Dimensions:** 90\*53.4\*9.6mm

**P106**



**Capacity:** 256GB/512GB/1TB/2TB  
**Interface:** Type C USB3.2 Gen2  
**Material:** Plastic+Metal  
**Performance:** Read:Up to 520MB/s  
 Write:Up to 400MB/s  
**Dimensions:** 91\*54\*9.5mm

**P200**



**Capacity:** 500GB/1TB/2TB  
**Interface:** Type C USB 3.2 Gen2x2  
 20Gbps Type-C  
**Material:** Aluminum alloy + plastic  
**Performance:** Read:Up to 2000MB/s  
 Write:Up to 1800MB/s  
**Dimensions:** 85\*50\*8.6mm

**P230**



**Capacity:** 500GB/1TB/2TB  
**Interface:** Type C USB 3.2 Gen2x2  
 20Gbps Type-C  
**Material:** plastic  
**Performance:** Read:Up to 2000MB/s  
 Write:Up to 1800MB/s  
**Dimensions:** 84\*55\*11mm

### AP 2000



<b>Interface</b>	PCIe For Mac (PCIe Gen3x4, NVMe protocol)		
<b>Capacity</b>	256GB	512GB	1TB
<b>Seq Read</b>	2050MB/s	2150MB/s	2150MB/s
<b>Seq Write</b>	1250MB/s	1600MB/s	1850MB/s
<b>TBW</b>	128	256	512
<b>Temp.OP</b>	0°C~+70°C		
<b>Dimensions</b>	89*24*2.7mm		

...  
Ongoing research  
and development

## Removable enclosure

### MD 80



<b>Material:</b>	Aluminum alloy + ABS plastic
<b>interface:</b>	USB-A + Type-C (USB3.2 Gen2)
<b>agreement:</b>	NVMe / SATA agreement
<b>Transfer rate:</b>	NVMe-10Gbps;SATA-6Gbps
<b>Hard disk support:</b>	M.2 SSD (2280、2260、2242)
<b>Support System:</b>	Windows /Mac OS /Linux /Android

...  
Ongoing research  
and development

## DDR

### UD01C



<b>type</b>	DDR4 288Pin / U-DIMM(Desktop computer memory stick)
<b>capacity</b>	4GB/8GB/16GB/32GB
<b>Operating frequency</b>	2666MHz/3000MHz/3200MHz
<b>Pin feet</b>	288Pin
<b>Operating voltage</b>	1.2-1.35V DC

### SD01



<b>type</b>	DDR4 260Pin / SO-DIMM(Laptop memory stick)
<b>capacity</b>	4GB/8GB/16GB/32GB
<b>Operating frequency</b>	2666MHz/3000MHz/3200MHz
<b>Pin feet</b>	260Pin
<b>Operating voltage</b>	1.2V DC

#### UD02



<b>type</b>	DDR4 288Pin / U-DIMM(Desktop computer memory stick)
<b>capacity</b>	4GB/8GB/16GB/32GB
<b>Operating frequency</b>	2666MHz/3000MHz/3200MHz
<b>Pin feet</b>	288Pin
<b>Operating voltage</b>	1.2-1.35V DC

...  
Ongoing research  
and development

### USB flash disk

#### F201



<b>Capacity:</b>	8GB/16GB/32GB/64GB
<b>Interface:</b>	USB2.0
<b>Material:</b>	plastics
<b>Performance:</b>	Read up to 20MB/s Write up to 8MB/s
<b>Dimenslons:</b>	58*18*10.5mm
<b>Temp.Storage:</b>	-25°Cto70°C

#### F202



<b>Capacity:</b>	512MB/1GB/2GB/4GB/8GB/16GB/ 32GB/64GB
<b>Interface:</b>	USB2.0
<b>Material:</b>	Aluminum alloy + plastic
<b>Performance:</b>	Read up to 20MB/s Write up to 8MB/s
<b>Dimenslons:</b>	57.6*17.3*9.4mm
<b>Temp.Storage:</b>	-25°Cto70°C

#### F206



<b>Capacity:</b>	8GB/16GB/32GB/64GB
<b>Interface:</b>	USB2.0
<b>Material:</b>	Metal
<b>Performance:</b>	Read:Up to 10MB/s Write:Up to 3MB/s
<b>Dimenslons:</b>	31.5*12.1*4.6mm
<b>Temp.Storage:</b>	-25°Cto70°C

#### F301



<b>Capacity:</b>	8GB/16GB/32GB/64GB
<b>Interface:</b>	USB3.0
<b>Material:</b>	ABS Plastic
<b>Performance:</b>	Read up to 110MB/s Write up to 40MB/s
<b>Dimenslons:</b>	51*17*11mm
<b>Temp.Storage:</b>	-25° to 75°C

#### F302



<b>Capacity:</b>	16GB/32GB/64G/128GB/256GB
<b>Interface:</b>	USB3.2 Gen1
<b>Material:</b>	Plastic+Metal
<b>Performance:</b>	Read:Up to 80MB/s Write:Up to 15MB/s
<b>Dimenslons:</b>	57.6*17.3*9.4mm
<b>Temp.Storage:</b>	-25°Cto70°C

#### F309



<b>Capacity:</b>	32GB/64GB/128GB/256GB
<b>Interface:</b>	USB 3.2 Gen1 Type-A
<b>Material:</b>	Zinc alloy
<b>Performance:</b>	Read up to 260MB/s Write up to 60MB/s
<b>Dimenslons:</b>	61*16*9.6mm
<b>Temp.Storage:</b>	-25°Cto70°C



**F310**



**Capacity:** 16GB/32GB/64GB/128GB  
**Interface:** USB 3.2 Gen1  
**Material:** Zinc alloy  
**Performance:** Read up to 110MB/s  
 Write up to 35MB/s  
**Dimensions:** 38.2\*12.1\*4.6mm  
**Temp.Storage:** -25°Cto70°C

**F313**



**Capacity:** 16GB/32GB/64G/128GB/256GB  
**Interface:** USB3.2 Gen1  
**Material:** Metal  
**Performance:** Read:Up to 80MB/s  
 Write:Up to 15MB/s  
**Dimensions:** 61\*16.9\*8.9mm  
**Temp.Storage:** -25°Cto70°C

**F331**



**Capacity:** 128GB/256GB/512GB  
**Interface:** USB3.2 Gen1  
**Material:** Plastic+Metal  
**Performance:** Read:Up to 400MB/s  
 Write:Up to 200MB/s  
**Dimensions:** 65.2\*20.7\*14mm  
**Temp.Storage:** -25°Cto70°C

...  
 Ongoing research  
 and development

## Mobile USB flash drive

**F272**



**Capacity:** 8GB/16GB/32GB/64GB/128GB  
**Interface:** USB2.0  
**Material:** Plastic+Metal  
**Performance:** Read up to 25MB/s  
 Write up to 10MB/s  
**Dimensions:** 63\*17.5\*8.6mm  
**Temp.Storage:** -25°Cto70°C

**F363**



**Capacity:** 16GB/32GB/64G/128GB/256GB  
**Interface:** USB3.2 Gen1+micro  
**Material:** Plastic+Metal  
**Performance:** Read:Up to 80MB/s  
 Write:Up to 15MB/s  
**Dimensions:** 58.7\*14\*8.9mm  
**Temp.Storage:** -25°Cto70°C

**F375**



**Capacity:** 64GB/128GB/256GB  
**Interface:** USB 3.2 Gen1 Type-A+Type-C  
**Material:** Zinc alloy  
**Performance:** Read up to 260MB/s  
 Write up to 240MB/s  
**Dimensions:** 66.3\*14\*9.5mm  
**Temp.Storage:** -25°Cto70°C

**F376**



**Capacity:** 16GB/32GB/64G/128GB/256GB  
**Interface:** USB3.2 Gen1+Type C  
**Material:** Metal  
**Performance:** Read up to 80MB/s  
 Write up to 15MB/s  
**Dimensions:** 64.8\*14\*8.9mm  
**Temp.Storage:** -25°Cto70°C

**F379**



**Capacity:** 16GB/32GB/64G/128GB/256GB  
**Interface:** USB3.2 Gen1+Type C  
**Material:** Metal  
**Performance:** Read:Up to 250MB/s  
 Write:Up to 30MB/s  
**Dimensions:** 62.8\*14\*10.5mm  
**Temp.Storage:** -25°Cto70°C

**F383**



**Capacity:** 64G/128GB/256GB/512GB  
**Interface:** USB3.2 Gen1+Lighting  
**Material:** Metal  
**Performance:** Read:Up to 80MB/s  
 Write:Up to 30MB/s  
**Dimensions:** 64.8\*14\*8.9mm  
**Temp.Storage:** -25°Cto70°C

### Solid state USB flash drive

Focus on storage

#### F306



**Capacity:** 64GB/128GB/256GB/512GB/1TB  
**Interface:** USB3.2 Gen2  
**Material:** Plastic+Metal  
**Performance:** Read:Up to 520MB/s  
 Write:Up to 400MB/s  
**Dimensions:** 73.5\*21.6\*12mm  
**Temp.Storage:** -25°Cto70°C

#### FF311



**Capacity:** 64G/128GB/256GB/512  
**Interface:** USB3.2 Gen2  
**Material:** Metal  
**Performance:** Read up to 350MB/s  
 Write up to 150MB/s  
**Dimensions:** 73.8\*24.1\*10.2mm  
**Temp.Storage:** -25°Cto70°C

#### FF511



**Capacity:** 128GB/256GB/512GB/1TB  
**Interface:** USB3.2 Gen2  
**Material:** Metal  
**Performance:** Read:Up to 520MB/s  
 Write:Up to 400MB/s  
**Dimensions:** 73.8\*24.1\*10.2mm  
**Temp.Storage:** -25°Cto70°C

#### FF911



**Capacity:** 256GB/512GB/1TB  
**Interface:** USB3.2 Gen2  
**Material:** Metal  
**Performance:** Read:Up to 1050MB/s  
 Write:Up to 920MB/s  
**Dimensions:** 73.8\*24.1\*10.2mm  
**Temp.Storage:** -25°Cto70°C

### Mobile phone solid state u disk

#### F395



**Capacity:** 128GB/256GB/512GB/1TB  
**Interface:** Type C USB3.2 Gen2 /USB3.2 Gen2  
**Material:** Plastic+Metal  
**Performance:** Read:Up to 520MB/s  
 Write:Up to 400MB/s  
**Dimensions:** 76\*21.6\*12mm  
**Temp.Storage:** -25°Cto70°C

#### FF520



**Capacity:** 128GB/256GB/512GB  
**Interface:** USB 3.2 Gen2 Type-A+Type-C  
**Material:** Zinc alloy  
**Performance:** Read up to 560MB/s  
 Write up to 520MB/s  
**Dimensions:** 66\*14\*9.4mm  
**Temp.Storage:** -25°Cto70°C

#### FP650



**Capacity:** 128GB/256GB/512GB/1TB  
**Interface:** Type C USB3.2 Gen2 /USB3.2 Gen2  
**Material:** Metal  
**Performance:** Read:Up to 520MB/s  
 Write:Up to 400MB/s  
**Dimensions:** 76\*21.6\*12mm  
**Temp.Storage:** -25°Cto70°C

#### FP651



**Capacity:** 128GB/256GB/512GB/1TB  
**Interface:** Type C USB3.2 Gen2 /USB3.2 Gen2  
**Material:** Metal  
**Performance:** Read:Up to 520MB/s  
 Write:Up to 400MB/s  
**Dimensions:** 76\*21.6\*12mm  
**Temp.Storage:** -25°Cto70°C

#### K1



**Capacity:** 16GB/32GB/64GB/128GB/  
256GB/512GB

**Performance:** Read up to 16GB-128G 85MB/s  
Read up to 256GB-512GB 100MB/s

**Dimensions:** 15X11X1.02mm

**Temp.Storage:** -40°C~85°C

#### K1 Pro



**Capacity:** 16GB/32GB/64GB/128GB/  
256GB/512GB

**Performance:** Read up to 16GB-128G 90MB/s  
Read up to 256GB-512GB 100MB/s

**Dimensions:** 15X11X1.02mm

**Temp.Storage:** -40°C~85°C

#### K2



**Capacity:** 16GB/32GB/64GB/128GB/  
256GB/512GB

**Performance:** Read up to 98MB/s  
Write up to 25MB/s

**Dimensions:** 15x11x1.1mm

**Temp.Storage:** -25°C~+85°C

#### NM1



**Capacity:** 16GB/32GB/64GB/128GB

**Performance:** Read up to 90MB/s  
Write up to 80MB/s

**Dimensions:** 12.3x8.8x0.7mm

**Temp.Storage:** 25°C~+85°C

#### CFE01



**Capacity:** 64GB/128GB/256GB/512GB/1TB

**Performance:** Read up to 1700MB/s  
Write up to 1400MB/s

**Dimensions:** 38.5x29.6x3.8mm

**Temp.Storage:** -40°C~85°C

...

Ongoing research  
and development