

SPLK*Tech*[®]

POINT OF SALE

PRODUCT CATALOG



BEST SELLING ALL IN ONE ANDROID POS



A5

- 5.5" IPS HD Display
- Android 6.0
- 58mm built-in Thermal Receipt Printer
- Capacitive Touch Panel
- Dual SIM Cards, support 3G
- WIFI & Bluetooth
- 3000*2 mAh Battery

CPU

MTK 6580 Quad-Core
Cortex A7

RAM

1GB DDR3

STORAGE

8GB EMMC

PORTABLE POS WITH 58MM THERMAL RECEIPT PRINTER



P30

- 5.5" 720P Display
- Android 10
- 58mm built-in Thermal Receipt Printer
- Capacitive Touch Panel
- Dual SIM Cards, support 4G
- EMV Chip/IC card reader/MSR/Apple Pay/Google Pay/QR Code Payment
- NFC, WIFI & Bluetooth
- 2600*2 mAh Battery

CPU

Quad-core cortex -
A531.4GHz

RAM

1GB DDR3
2GB DDR3(optional)

STORAGE

8GB EMMC
16GB EMMC(Optional)

PORTABLE POS WITH 80MM THERMAL AND LABEL PRINTER



A7

- 7" IPS HD Display
- Android 6.0
- 80mm built-in Thermal Receipt & Label Printer
- Capacitive Touch Panel
- Dual SIM Cards, support 3G
- NFC, WIFI & Bluetooth
- 5000*2 mAh Battery
- Speed: 90mm/s

CPU

MTK 6580 Quad-Core
Cortex A7

RAM

1GB DDR3

STORAGE

8GB EMMC

PORTABLE POS WITH 58MM THERMAL PRINTER



A5N

- 5.5" 1280*720 IPS HD Display
- Android 8.1
- 58mm built-in Thermal Receipt Printer
- Capacitive Touch Panel
- Dual SIM Cards, support 4G
- NFC (optional)
- WIFI & Bluetooth
- Removable lithium battery, 3.7V/5000mAh
- Support Google Play Store

CPU

MTK 6739
ARM Cortex-A7 quad core 1.5GHz

MEMORY

1GB RAM+8GB ROM
2GB RAM+32GB ROM

CAMERA

5 megapixels Auto focus

IMAGE 1D & 2D CODE READER



SC-Z1 PDA

- Image 1D&2D Scanner/8M AF
- 5.99" HD Capacitive TP
- USB Type-C& Bluetooth 4.0/4.2
- Android 8.1 or up
- Battery more than 4000mAh
- Built-in speaker Hi-Fi Dual Channel
- TF extension max support 64GB (Optional)
- Support 3G/4G

CPU+Motherboard

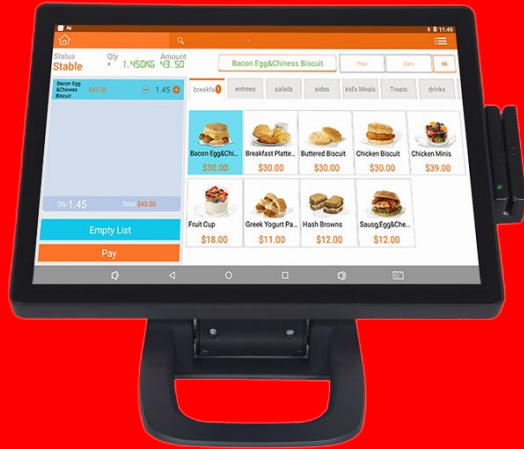
MTK 6739

Memory

2GB DDR3

Storage

64GB EMMC



280F (Metal Shell&Foldable)

- 15" /15.6" Display
- Windows 10 / Android
- 58mm/80mm External Thermal Printer (optional)
- Capacitive Touch Panel
- LED8 digits/VFD220/9.7" customer display (optional)
- Available in Black Color
- WIFI & Bluetooth (optional)
- Metal Material

CPU

Windows: Intel Core i3 2nd,3rd,5th, 10th/ core i5 2nd,3rd,5th,10th/ i7/ Celeron J4125
Android: RK3288/3566 Quad Core 1.8GHz

RAM

Windows: 4GB/8GB/16GB DDR
Android: 2GB DDR3

STORAGE

Windows: 64GB/128GB/256GB SSD
Android:16GB/ 32GB EMMC



280FN (Foldable)

- 15/15.6" 1080P Display
- Windows 10/Android
- Capacitive Touch Panel
- LED8/VFD220/11.6" customer display (optional)
- External Receipt Thermal Printer(optional)
- WIFI & Bluetooth(optional)
- Available in Black & White Color
- ABS Plastic

CPU

Android: RK3288/3566 Quad Core
1.8GHz

Windows: Intel Core i3 2nd,3rd,5th,
10th/ i5 2nd,3rd,5th,10th/ i7/J1900
Quad Core 1.8GHz/J4125

RAM

Android: 2GB DDR3

Windows: 4GB/8GB/16GB
DDR

STORAGE

Android: 16GB/32GB EMMC

Windows: 64GB/128GB/256GB SSD



280A (Metal Shell)

- 15 "/15.6" Full HD 1080P Display
- Windows 10 /Android
- 58mm/80mm External Thermal Printer (optional)
- Capacitive Touch Panel
- LED8/VFD220/9.7" customer display (optional)
- Available in Black Color
- WIFI & Bluetooth
- Metal Materials

CPU

Android: RK3288/3566 Quad Core
1.8GHz

Windows: Intel Core i3
2nd,3rd,5th,10th/ i5 2nd,3rd,5th,10th/
i7 / Intel Celeron J4125

RAM

Android: 2GB DDR3

Windows:
4GB/8GB/16GB DDR

STORAGE

Android: 16GB/32GB EMMC

Windows: 64GB/128GB/256GB SSD



580Pro

- 15.6" Full HD 1080P Display
- Windows 10/ Android
- External 58mm or 80mm Thermal Receipt Printer(Optional)
- Capacitive Touch Panel
- LED8/VFD220/11.6" customer display (optional)
- Available in Black & White Color
- WIFI & Bluetooth (optional)
- ABS Plastic

CPU

Android: RK3288/3566 Quad Core
1.8GHz

Windows: Intel Core i3
2nd,3rd,5th,10th/ i5 2nd,3rd,5th,10th/
i7/ Intel Celeron J4125

RAM

Android: 2GB DDR3

Windows:
4GB/8GB/16GB DDR

STORAGE

Android: 32GB EMMC

Windows: 64GB/128GB/256GB SSD



380A

- ABS Plastic +Metal USB Interface
- 15.6" Display
- Android / Windows 10
- LED8/VFD220/11.6" Customer display(Optional)
- 58mm/80mm External Thermal Printer (Optional)
- Capacitive Touch Panel
- WIFI & Bluetooth (Optional)
- Available in Black & White Color

CPU

Android: RK3288/3566 Quad Core
1.8GHz

Windows: Intel Core i3
2nd,3rd,5th,10th/ i5 2nd,3rd,5th,10th/i7
/Intel Celeron J4125

RAM

Android: 2GB DDR3

Windows:
4GB/8GB/16GB DDR

STORAGE

Android: 16GB/32GB EMMC

Windows: 64GB/128GB/256GB SSD

CERAMIC LIKE LUMINOUS ABS PLASTIC



680

- 13.3" /15.6" Display
- Windows 10 / Android
- 58mm/80mm External Thermal Printer (optional)
- Capacitive Touch Panel
- LED8/VFD220/13.3" /15.6" customer display (optional)
- Available in Black & White Color
- WIFI & Bluetooth (optional)
- ABS Plastic +Metal USB Interface

CPU

Android: RK3288/3566 Quad Core
1.8GHz

Windows: Intel Core i3
2nd,3rd,5th,10th/ i5 2nd,3rd,5th,10th/i7
/Intel Celeron J4125

RAM

Android: 2GB DDR3
Windows: 4GB/8GB/16GB
DDR

STORAGE

Android: 16GB/32GB EMMC
Windows: 64GB/128GB/256GB SSD



680S

- 13.3" /15.6" Display
- Windows 10/Android
- 80mm Built-in Thermal Printer with cutter
- Capacitive Touch Panel
- LED8/VFD220/13.3" /15.6" customer display (optional)
- Available in Black & White Color
- WIFI & Bluetooth
- ABS Plastic +Metal USB Interface

CPU

Android: RK3288/3566 Quad Core
1.8GHz

Windows: Intel Core i3
2nd,3rd,5th,10th/ i5
2nd,3rd,5th,10th/i7 /Intel Celeron
J4125

RAM

Android: 2GB DDR3
Windows: 4GB/8GB/16GB
DDR

STORAGE

Android: 16GB/32GB EMMC
Windows: 64GB/128GB/256GB SSD

ALL IN ONE POS SYSTEMS



A12Pro

- 12.5" HD Display/11.6" 1366*768P Display
- Android 7.1/Android 11
- 58mm/80mm built-in Thermal Printer
- Capacitive Touch Panel
- LED-8/220-VFD/5" HD 2nd Display
- NFC card reader (optional)
- Built-in 2D Scanner(optional)
- WIFI & Bluetooth
- ABS Plastic +Metal USB Interface

CPU

Android:
RK3288/RK3566/RK3568 Quad
Core

RAM

Android: 2GB DDR3

STORAGE

Android: 16GB EMMC/ 32GB
EMMC

BUILT-IN 80MM PRINTER WITH CUTTER



T70

- 15.6" 1080P Display
- Android 11
- 80mm Built-in Thermal Printer with cutter
- Capacitive Touch Panel
- 10.1" /15.6" customer display (optional)
- Available in Black
- WIFI & Bluetooth
- ABS Plastic +Metal USB Interface

CPU+Motherboard

ARM Cortex-A55 2.0Ghz

Memory

2GB DDR3

Storage

4GB/16GB/32GB EMMC

BUILT-IN 80MM PRINTER WITH CUTTER



880P

- 15.6" Display
- Windows 10/ Android
- 80mm Built-in Thermal Printer with cutter
- Capacitive Touch Panel
- LED8 digits/VFD220/15.6" customer display (optional)
- Available in Black or White
- WIFI & Bluetooth (Optional)
- ABS Plastic +Metal USB Interface

CPU+Motherboard

Android: RK3288/3566 Quad Core
Windows: Intel Core i3
2nd,3rd,5th,10th/ i5
2nd,3rd,5th,10th/ i7 /Intel Celeron
J4125

Memory

Android: 2GB DDR3
Windows: 4GB/8GB/16GB
SSD

Storage

Android: 16GB/32GB EMMC
Windows: 64GB/128GB/256GB SSD



380

- 15 " or 15.6" 1080P Display
- Windows 10/ Android
- External 58mm or 80mm Thermal Receipt Printer(Optional)
- Capacitive Touch Panel
- LED8/VFD220 customer display (optional)
- MSR (Optional)
- Available in Black or White
- ABS Material

CPU+Motherboard

Android: RK3288/3566 Quad Core
Windows: Intel Core i3
2nd,3rd,5th,10th/ i5
2nd,3rd,5th,10th/ i7 /Intel Celeron
J4125

Memory

Android: 2GB DDR3
Windows: 4GB/8GB/16GB DDR

Storage

Android:16GB/ 32GB EMMC
Windows:
32GB/64GB/128GB/256GB S



400

- 15" or 15.6" Display
- Windows 10 /Android
- External 58mm or 80mm Thermal Receipt Printer(Optional)
- Capacitive Touch Panel
- LED/VFD/15" or 15.6" customer display (optional)
- MSR (Optional)
- Available in Black & White Color
- ABS Plastic +Metal USB Interface

CPU

Android: RK3288/3566 Quad Core
Windows: Intel Core i3
2nd,3rd,5th,10th/ i5 2nd,3rd,5th,10th/
i7 /Intel Celeron J4125

RAM

Android: 2GB DDR3
Windows: 4GB/8GB/16GB
DDR3

STORAGE

Android: 16GB/32GB EMMC
Windows: 32GB/64GB/128GB/256GB SSD

FOLDABLE TABLET POS



880

- 12.5" Full HD1080P Display
- Android 7.1
- 58mm/80mm External Thermal Printer (optional)
- Capacitive Touch Panel
- 7" Full HD Customer Display
- MSR card reader (optional)
- WIFI & Bluetooth
- ABS Plastic +Metal USB Interface

CPU

Android: RK3288/3566 Quad Core

RAM

Android: 2GB DDR3

STORAGE

Android: 16GB/32GB EMMC



780Pro

- 15" /15.6" Full HD 1080P Display
- Android 7.1/Windows10
- 80mm Built-in Thermal Printer with cutter
- Capacitive Touch Panel
- LED8/VFD220/15" /15.6" HD customer display (optional)
- Available in Black & White Color
- WIFI & Bluetooth(optional)
- ABS Plastic +Metal USB Interface

CPU

Android: RK3566/RK3288 Quad Core
1.8GHz

Windows: Intel Core i3
2nd,3rd,5th,10th/ i5 2nd,3rd,5th,10th/
i7 /Intel Celeron J4125

RAM

Android: 2GB DDR3

Windows:
4GB/8GB/16GB DDR

STORAGE

Android:16GB/ 32GB EMMC

Windows: 64GB/128GB/256GB SSD



680K

- 15.6" 1080P Display
- Android
- 58mm/80mm Built-in Thermal Printer with cutter
- Capacitive Touch Panel
- LED/VFD/15" /15.6" customer display (optional)
- Available in White Color
- WIFI & Bluetooth

CPU

Android: RK3566/RK3568 Quad Core
1.8GHz

RAM

Android: 2GB DDR3

STORAGE

Android: 16GB/32GB EMMC



TABLET14

- 14" Full HD1080P Display
- Android 11
- 58mm/80mm External Thermal Printer (optional)
- Capacitive Touch Panel
- MSR card reader (optional)
- WIFI & Bluetooth
- ABS Plastic +Metal USB Interface

CPU

Android: RK3566/3288
Quad Core

RAM

Android: 2GB DDR3

Storage

Android: 16GB/32GB EMMC



680Plus

- 14.1" Full HD1080P Display
- Android 7.1/Windows10
- 80mm Built-in Thermal Printer with cutter
- Capacitive Touch Panel
- LED8 Digits/VFD220 customer display(optional)
- Built-in 2D Barcode Scanner (Optional)
- WIFI & Bluetooth (Optional)
- ABS Plastic +Metal USB Interface

CPU

Android: RK3288/3566 Quad Core
1.8GHz

Windows: Intel Core i3
2nd,3rd,5th,10th/ i5 2nd,3rd,5th,10th/i7
/Intel Celeron J4125

RAM

Android: 2GB DDR3

Windows:
4GB/8GB/16GB SSD

STORAGE

Android: 16GB/32GB EMMC

Windows: 64GB/128GB/256GB SSD



280Plus

- 15" Display
- Windows 10
- 58mm/80mm External Thermal Printer (optional)
- Capacitive Touch Panel
- LED8 digits/VFD220
- Available in Black & White Color
- WIFI & Bluetooth (optional)
- ABS Plastic +Metal USB Interface

CPU

Windows: Intel Core i3
2nd,3rd,5th,10th/ i5
2nd,3rd,5th,10th/i7 /Intel Celeron
J4125

RAM

Windows: 4GB/8GB/16GB
DDR

STORAGE

Windows: 64GB/128GB/256GB SSD



380Plus

- 12" /14.1" Display
- Windows 10
- 58mm Built-in Thermal Receipt Printer
- Resistive Touch Panel
- LED/VFD/12" customer display (optional)
- ASCII Keyboard
- 420mm Cash Drawer
- ABS Plastic +Metal USB Interface

CPU

Windows: Intel Core i3
2nd,3rd,5th,10th/ i5
2nd,3rd,5th,10th/i7 /Intel Celeron
J4125

RAM

Windows: 4GB/8GB/16GB
DDR

STORAGE

Windows: 64GB/128GB/256GB SSD



HDD-A14

- 14" HD1080P Display
- Windows/Android
- 80mm External Thermal Printer with cutter
- Capacitive Touch Panel
- LED/VFD customer display (optional)
- Available in Black & White Color
- WIFI & Bluetooth

CPU

Windows: Intel Corei3/Corei5 Quad
Core 1.8GHz/J4125
Android: RK3288/RK3566

RAM

Windows: 4GB/8GB DDR3
Android: 2GB

STORAGE

Windows: 64GB/128GB SSD
Android: 16GB/32GB EMMC



HDD-580A Windows

- 15.6" Display
- Windows
- Built in 80mm Thermal Receipt Printer
- Capacitive Touch Panel
- Keyboard
- Built in 2D scanner
- 15.6" /LED/VFD customer display (optional)

CPU

Windows: Intel Core i3/Core i5 Quad
Core 1.8GHz/J4125

RAM

Windows: 4GB/8GB DDR3

STORAGE

Windows: 64GB/128GB SSD

Self-service Machine Kiosk



S215

- 15.6/21.5 inch Full HD 1080P
- Android 7.1/Windows
- 5MP Camera (Optional)
- 58mm/80mm External Thermal Printer (optional)
- Capacitive Touch Panel
- 2D Scanner
- Black & White
- VESA Bracket Module(optional)

CPU+Motherboard

Windows: Intel
Corei3/Corei5 Quad Core
1.8GHz/J4125

Android:
RK3288/RK3566

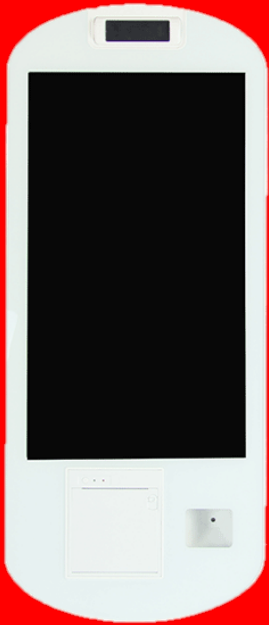
Memory

2GB/4GB/8GB/16GB

Storage

32GB/64GB/128GB/256
GB

Self-service Machine Kiosk



S215P

- 15.6/21.5 inch Full HD 1080P
- Andriod 7.1/Win
- 5MP Camera (Optional)
- 58mm/80mm External Thermal Printer (optional)
- Capacitive Touch Panel
- 2D Scanner
- Black & White
- VESA Bracket Module(optional)

CPU+Motherboard

Windows: Intel
Corei3/Corei5 Quad Core
1.8GHz/J4125
Android:
RK3288/RK3566

Memory

2GB/4GB/8GB

Storage

32GB/64GB/128GB/256
GB

AI Scale



AI Scale

- 15.6 inch Full HD 1080P
- Andriod 11
- 5MP Camera (Optional)
- Built in 80mm Thermal Printer (optional)
- Capacitive Touch Panel
- 2D Scanner
- VESA Bracket Module(optional)
- For Grocery or shops to be weighed Software

CPU+Motherboard
RK3566 Quad Core 1.8
GHZ

Memory
2GB

Storage
16GB

THERMAL RECEIPT PRINTER



T80C

- 79.5mm Paper Width
- USB + LAN/ USB + Bluetooth
- PC347(Standard Europe), Katakana, PC850(Multilingual), PC860(Portuguese), PC863(Canadian-French), PC865(Nordic), West Europe, Greek, Hebrew, East Europe, Iran, WPC1252, PC866(Cyrillic#2), PC852(Latin2), PC858, IranII, Latvian, Arabic, PT151(1251)
- 24V/2.5A Power Supply

Print Speed

200mm/sec

Resolution

576 dots/line, Direct Line
Thermal

Print Life

150 KM

THERMAL RECEIPT PRINTER



8360

- ABS+Metal
- USB+LAN /USB+Bluetooth
- Windows, Android, IOS
- QRCode、PDF417、DataMatrix
- Support 1D & 2D Scanning
- White LED as Light Source
- Reading Image Mode
- 203DPI

Scan Type

Image CMOS

Print Speed

230mm/s

Extended Characters

PC347 (Standard Europe), Katakana,
PC850(Multilingual),PC860(Portuguese),

POPULAR 80mm PRINTER WITH CUTTER



320B

- 30~80mm Paper Width
- USB interface
- PC347 (Standard Europe), Katakana, PC850(Multilingual),PC860(Portuguese)
- ESC/POS, CPCL, TSPL
- 24V/2.5A Power Supply

Print Speed

160mm/sec

Resolution

576 dots/line, Direct Line
Thermal

Print Life

150 KM

THERMAL RECEIPT PRINTER



T80E Printer

- 79.5mm Paper Width
- USB + Ethernet /USB/Bluetooth+USB
- PC347(Standard Europe), Katakana, PC850(Multilingual), PC860(Portuguese), PC863(Canadian-French), PC865(Nordic), West Europe, Greek, Hebrew, East Europe, Iran, WPC1252, PC866(Cyrillic#2), PC852(Latin2), PC858, IranII, Latvian, Arabic, PT151(1251)
- 24V/2.5A Power Supply

Print Speed

200mm/sec

Resolution

576 dots/line, Direct Line
Thermal

Print Life

150 KM

POPULAR 80mm PRINTER WITH CUTTER



M803L Printer

- 79.5mm Paper Width
- USB + Ethernet /USB/Bluetooth+USB
- PC347(Standard Europe), Katakana, PC850(Multilingual), PC860(Portuguese), PC863(Canadian-French), PC865(Nordic), West Europe, Greek, Hebrew, East Europe, Iran, WPC1252, PC866(Cyrillic#2), PC852(Latin2), PC858, IranII, Latvian, Arabic, PT151(1251)
- 24V/2.5A Power Supply

Print Speed

200mm/sec

Resolution

576 dots/line, Direct Line
Thermal

Print Life

150 KM

THERMAL RECEIPT PRINTER



T890H Printer

- ABS+Metal
- USB+Serial+Lan(Optional:Bluetooth/WIFI)
- Windows, Android, IOS
- QRCode、PDF417、DataMatrix
- Support 1D & 2D Scanning
- White LED as Light Source
- Reading Image Mode
- 576DPI

Scan Type

Image CMOS

Print Speed

300mm/s

Extended Characters

PC347(Standard Europe)/Katakana/PC850(Multilingual)/
PC860(Portuguese)PC863(Canadian-French)/PC865(Nordic)/
West Europe/ Greek/HebrewEast Europe/ran/WPC1252/PC866(Cyrillic#2)/
PC852(Latin2)1Pc858/IranllLatvian / Arabic/ PT151(1251)

THERMAL RECEIPT PRINTER



80260

- 79.5mm Paper Width
- USB + Serial + Ethernet (Bluetooth optional)
- PC347(Standard Europe), Katakana, PC850(Multilingual), PC860(Portuguese), PC863(Canadian-French), PC865(Nordic), West Europe, Greek, Hebrew, East Europe, Iran, WPC1252, PC866(Cyrillic#2), PC852(Latin2), PC858, IranII, Latvian, Arabic, PT151(1251)
- 24V/2.5A Power Supply

Print Speed

260mm/sec

Resolution

576 dots/line, Direct Line
Thermal

Print Life

150 KM

PORTABLE BT BARCODE LABEL PRINTER



M80+

- 80mm(3 inch) Thermal and Label Printer
- Printing speed up to 90mm/s
- Ports: USB Type-C & Bluetooth
- Display: 0.96 inch OLED
- With adjusting paper module, no paper jam
- Provide SDK and Secondary R&D
- Paper Width: 72mm(Effective Print Width)
- Roll Diameter: 50mm
- Power Adapter: DC9V/1A

Bar code Type

1D:UPC_A/JSN13(EAN13)/JAN8(EAN8)/
CODE39/ITF/CODEBAR/CODE93/CODE
128 2D: QR CODE/PDF417/Data Matrix

Battery

Lithium battery
2000mAh/7.4V

High Standard

Waterproof and fall proof

THERMAL RECEIPT PRINTER



5890

- 58mm Paper Width
- USB + Serial + Ethernet
- PC347(Standard Europe), Katakana, PC850(Multilingual), PC860(Portuguese), PC863(Canadian-French), PC865(Nordic), West Europe, Greek, Hebrew, East Europe, Iran, WPC1252, PC866(Cyrillic#2), PC852(Latin2), PC858, IranII, Latvian, Arabic, PT151(1251)
- 12V/3A Power Supply

Print Speed

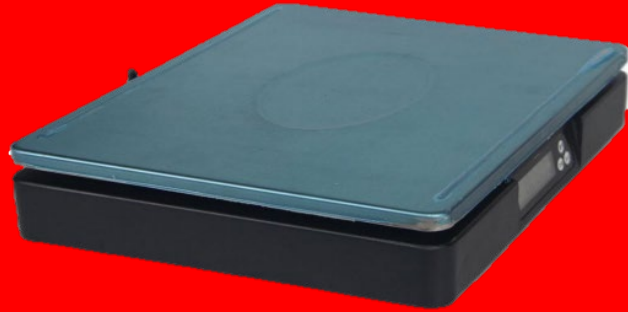
90mm/sec

Resolution

384 dots/line, Direct Line
Thermal

Print Life

50 KM



YZH-Scale

- Capacity: 6kg/15kg/30kg/60kg
- Accuracy: 1g/2g/5g/10g
- Interface: Serial+Bluetooth
- Pounds and kilograms can be switched

CASH DRAWER



CD-405

- Metal & ABS Plastic
- Five Grid Cash Notes Slots
- Four Grid Coins Slot
- Three Functions Open, Lock and Automatic
- Support Check Entry
- Steel Wire Clip
- RJ45 Interface Port
- Available in Black, Grey & White Color

Available Sizes

330mm
405mm
420mm
460mm

BARCODE SCANNER



SC-R7

- Support 1D Red Scanning
- 300scans/sec
- USB & Serial Interface
- >100000 times Button Life Span
- 1/5000000 Bit Error Rate
- Reading CCD Mode
- 10mm-500mm Scanning Distance
- Linear CCD sensor

Scanning Width

5cm - 15cm

Speed

300 scans/min

BARCODE SCANNER



SC-R8

- Support 1D and 2D
- 300scans/sec
- USB & Serial Interface
- >100000 times Button Life Span
- 1/5000000 Bit Error Rate
- 32 bit ARM MCU+ DSP Processor
- White LED as Light Source
- Image CMOS

Scanning Width

5cm - 15cm

Speed

300 scans/min

BARCODE SCANNER



SC-R88-2

- ABS Plastic
- USB Interface
- 32 bit ARM MCU+ DSP Processor
- 1/5,000,000 Bit Error Rate
- Support 1D & 2D Scanning
- White LED as Light Source
- Reading Image Mode
- Planar CMOS sensor 480 * 640

Scan Type

Image CMOS

Resolution

Code39 ≥5mil

Electrical Parameters

DC5V ±5%; Current: 240-260mA

BARCODE SCANNER



SC-R88

- ABS Plastic
- USB Interface
- 32 bit ARM MCU+ DSP Processor
- 1/5,000,000 Bit Error Rate
- Support 1D & 2D Scanning
- White LED as Light Source
- Reading Image Mode
- Planar CMOS sensor 480 * 640

Scan Type

Image CMOS

Resolution

Code39 ≥5mil

Electrical Parameters

DC5V ± 5%; Current: 240-260mA