



# EPOXY<sup>®</sup>

Resinous Flooring  
Systems



**DUR-A-FLEX<sup>®</sup>**  
INNOVATION FROM THE FLOOR UP



## DUR-A-FLEX® EPOXY FLOORING SYSTEMS

Exceptional durability, great looks, and outstanding value. The Dur-A-Flex family of epoxy flooring systems offers the most protection for your money, providing superior resistance to chemical spills, heavy equipment and continuous traffic. Install a seamless, sanitary, and easy to maintain surface that works as hard as you do, in any environment.



CA 01350  
COMPLIANT

### FLOOR SYSTEMS

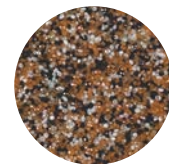
#### DUR-A-SHIELD II

Consisting of a solvent-based epoxy primer coat plus a finish coat, Dur-A-Shield creates a high strength surface that is high gloss, easy to clean and resistant to abrasion, oil, gasoline, acids, and solvents.

#### DUR-A-QUARTZ



Deluxe, multi-colored quartz aggregate fused with clear 100% solids epoxy provides resistance to solvents, acids, and other chemicals. Available in two grades: Q28 (fine) and Q11 (coarse), this system is a top choice for decorative quartz flooring applications. Certified by The National Floor Safety Institute (NFSI).



Q-28



Q-11

#### DUR-A-GARD & DUR-A-GARD SL

Dur-A-Gard forms a smooth, high gloss finish and is also available in an orange peel finish formulation. If standard slip resistant performance is required, Non-Skid Grit can be added during the application process. Dur-A-Gard SL contains special fillers for self leveling applications where thicker systems from 35-120 mils are desired.



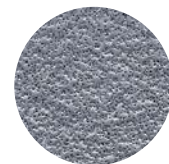
MICRO



MACRO

#### DUR-A-CHIP

This decorative resurfacer fuses multi-color chips with 100% solids epoxy to provide a truly unique look. Chips are available in Macro and Micro sizes.



STANDARD



COARSE

#### SHOP FLOOR

Natural colored quartz aggregate and pigmented Dur-A-Glaze Shop Floor epoxy make this the affordable industrial resurfacer. A solid color opaque, monolithic surface hides imperfections and stands up to abuse. Available in standard and course textures.



## DUR-A-CRETE

This heavy duty, trowel applied resurfacer, incorporating epoxy resins and specially graded aggregates is ideal for repair of badly spalled and eroded substrates.

## MICA-FLEX E

A decorative floor system comprised of coats of 100% solids epoxy, natural mica flakes, and a durable UV resistant urethane topcoat. Mica flakes are available in macro and micro sizes.

## ReFLEXions

A decorative, poured in place flooring system combining Dur-A-Flex's durable and reliable resin systems with the latest in effects pigments to produce inspiring one-of-a-kind looks.

## ELECTRO STATIC DISSIPATIVE FLOOR SYSTEMS

### DUR-A-GARD ESD

An epoxy-based ESD system offering low odor with a smooth finish. Good abrasion and chemical resistance in a two-component system.

### ARMOR-STAT ESD

An epoxy-urethane ESD system offering superior abrasion and chemical resistance makes it one of the longest-wearing ESD floor systems available in the industry. The three-step system offers our highest static protection from primer through urethane topcoat. Excellent UV resistance ensures consistent color throughout the life of the floor.

## FINISH TOPCOATS

### ARMOR TOP®

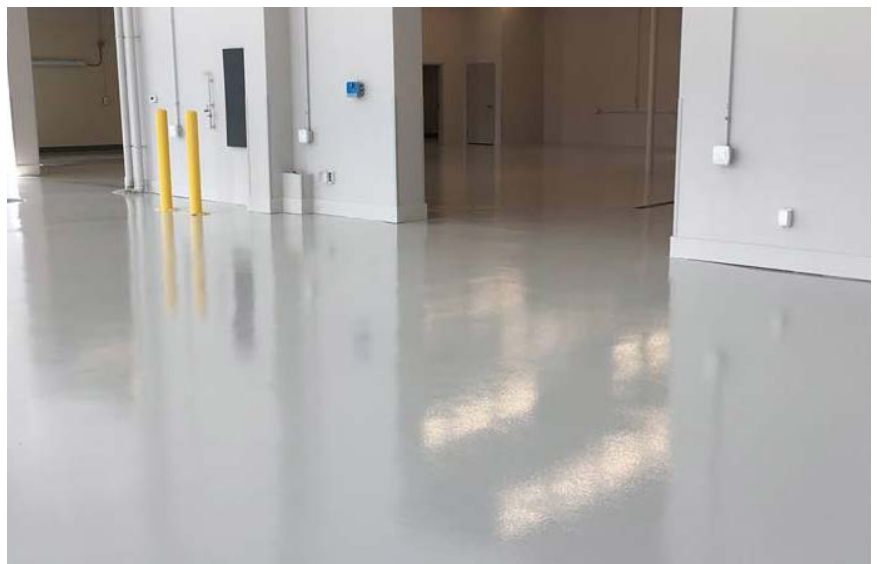
This three component aliphatic urethane protective coating was formulated for high traffic areas to protect against chemicals and wear. It is recommended as a final topcoat over all Dur-A-Flex epoxy floor systems.

## ACCELERA®

No odor, fast curing and UV resistant; recommended for all of our epoxy floor systems or when an odor free topcoat is required.

## DUR-A-GLAZE NOVOLAC

This 100% solids, no VOC, epoxy coating is specified as a topcoat when the ability to withstand corrosion and high heat is a priority.



**DUR-A-FLEX®**  
INNOVATION FROM THE FLOOR UP

## Standard Colors



\*Not available in Armor Top

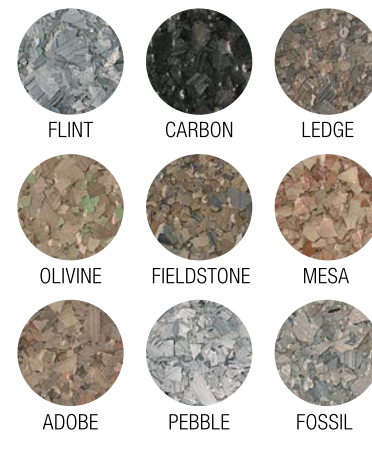
\*\*Not available in Shop Floor

## Mica-Flake



All mica samples shown contain metallic flakes.  
Available in macro and micro sizes.

## Earthstone Blends



Available in macro size only.

## ReFLEXions Standard Colors

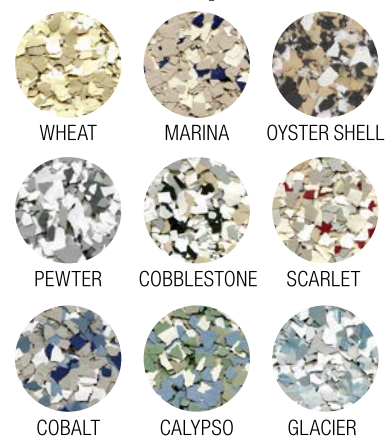


\*Due to natural ambering nature of epoxy, light colors should be avoided as the primary color in ReFLEXions floor systems.

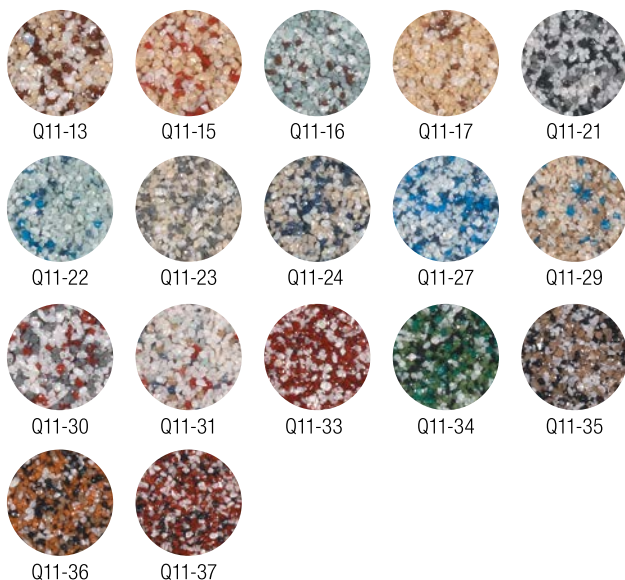
## Micro Chip Blends



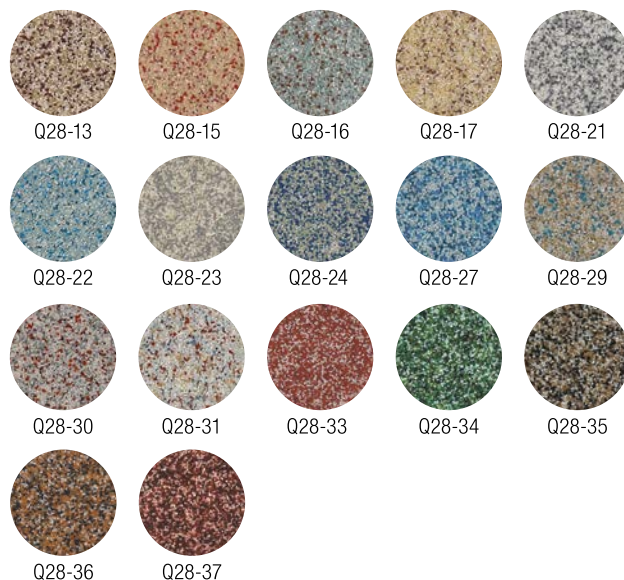
## Macro Chip Blends



## Quartz Blends - Q11



## Quartz Blends - Q28



The samples shown are only close approximations and should not be used for specification purposes.  
Contact Dur-A-Flex to obtain actual samples for best color selection.