



HYBRID-FLEX

Resinous Flooring
Systems



DUR-A-FLEX
INNOVATION FROM THE FLOOR UP



HYBRI-FLEX® FLOORING SYSTEMS

Each year, property owners spend an estimated 2.4 billion dollars on facility repairs as a result of moisture-related flooring failures. Hybri-Flex® flooring systems were created to help solve the problems of flooring failure due to moisture migration.

All Hybri-Flex systems start with our unique basecoat system and, when combined with any of our three application-specific solutions and topcoats, provide the highest performance resinous floor systems on the market today.

BUILT-IN MOISTURE MITIGATION SYSTEM

The unique Hybri-Flex system tolerates elevated moisture levels and can be installed in as few as 5 days after initial concrete pour*.

SELF PRIMING IN MOST APPLICATIONS

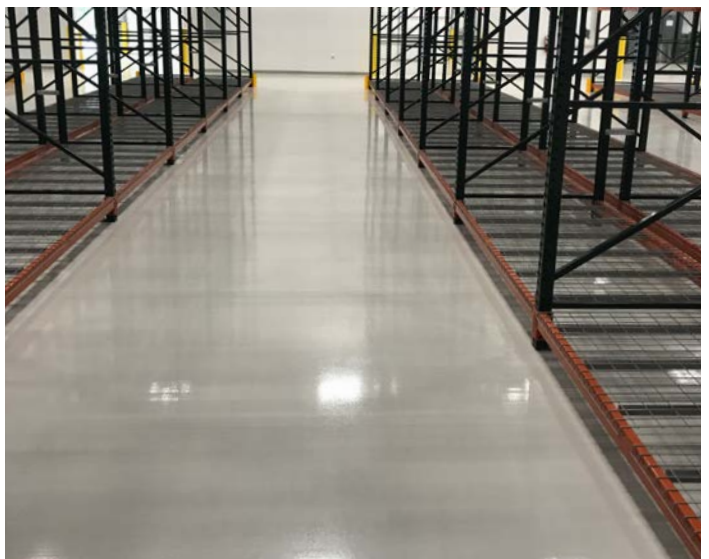
Completely eliminates a step and a full day in the installation process

SUPERIOR BONDING

The cementitious basecoat bonds to concrete better than most floor systems.

CONTRIBUTE TO LEED® CREDITS

CUSTOM COLOR MATCHES AND BLENDS AVAILABLE



CA 01350
COMPLIANT

*Consult your local Dur-A-Flex representative for concrete mix specifications.

HYBRI-FLEX Series M

Utilizes our methyl methacrylate (MMA) topcoats in applications where you need:

- The fastest installation with minimal downtime
- Excellent wear resistance
- UV light resistance for indoor and outdoor use

HYBRI-FLEX MQ

A 100% solids, decorative quartz system utilizing colored quartz aggregates with clear coatings. Quartz is available in two grades: Q28 (fine) and Q11 (coarse).

HYBRI-FLEX MC

A 100% solids, decorative chip system available in standard and custom (Macro only) blended colors and in two sizes: Macro and Micro

HYBRI-FLEX MB

A 100% solids, natural quartz system utilizing neutral colored aggregate with pigmented coatings. Quartz is available in two grades: Flintshot (fine) and Q-Rok (coarse).

HYBRI-FLEX Series A

Utilizes our Accelerera topcoats in applications where you need:

- No odor or fumes during installation
- Fast installation and cure times
- A high gloss finish

HYBRI-FLEX AQ

A 100% solids, no odor, decorative quartz system. Quartz is available in blended and solid colors and in two grades: Q28 (fine) and Q(11).

HYBRI-FLEX AB

A 100% solids, no odor, natural quartz system utilizing neutral-colored flintshot (fine) aggregate with pigmented coatings.

HYBRI-FLEX AC

A 100% solids, no odor, decorative chip system available in standard and custom (Macro only) blended colors and in two sizes: Macro and Micro.

HYBRI-FLEX Series E

Utilizes our epoxy topcoats in applications where you need:

- An economically and cost effective floor solution
- Stain and wear resistance
- Impact resistance

HYBRI-FLEX EQ

A decorative color quartz system available in blended and solid colors and in two grades: Q28 (fine) and Q11 (coarse).

HYBRI-FLEX EC

A decorative chip system available in standard and custom (Macro only) blended colors and in two sizes: Macro and Micro.

HYBRI-FLEX EB

A natural quartz system utilizing neutral-colored aggregate with pigmented coatings. Quartz is available in two grades: Flintshot (fine) and Q-Rok (coarse).

HYBRI-FLEX ES

A smooth finish system utilizing solid color resins with our wear resistant Armor Top® coating.



DUR-A-FLEX®
INNOVATION FROM THE FLOOR UP

Standard Colors



*Not available in MMA #Not available in Armor Top **Not available in Shop Floor

Mica-Flake



All mica samples shown contain metallic flakes. Available in macro and micro sizes.

Earthstone Blends



Available in macro size only.

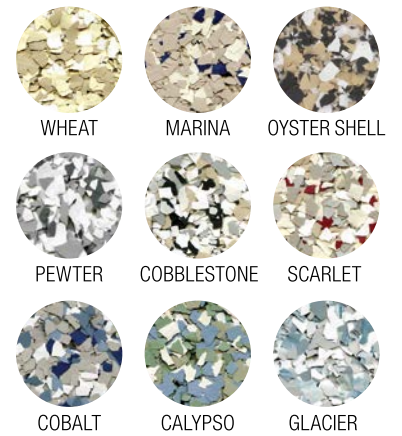
Accelera® Standard Colors



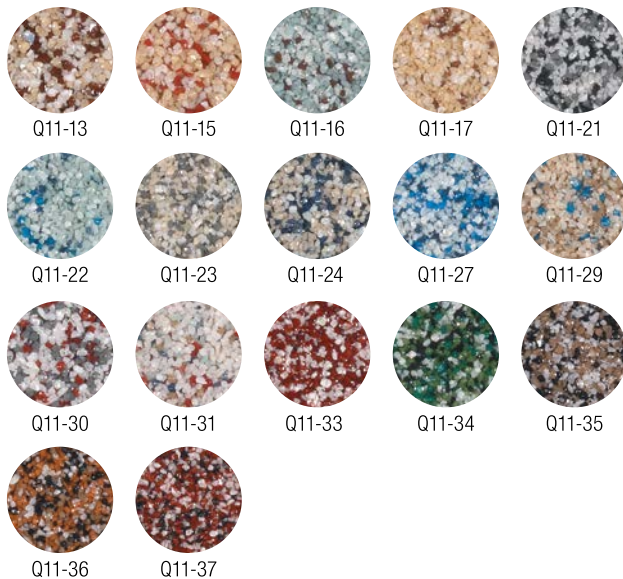
Micro Chip Blends



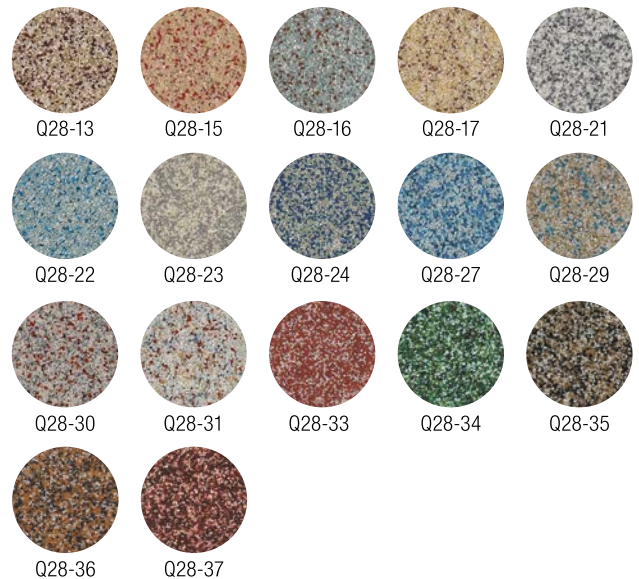
Macro Chip Blends



Quartz Blends - Q11



Quartz Blends - Q28



The samples shown are only close approximations and should not be used for specification purposes. Contact Dur-A-Flex to obtain actual samples for best color selection.