



Océ
ColorWave 300
multifunction
system

Jump to one



Canon
CANON GROUP

All-in-one large
format color system

Jump to one

- One for all: print, copy, and scan in color and black and white
- One that saves: reduce floor space and labor
- One for tomorrow: grow your business sustainably

Jump to one



Océ ColorWave 300 multifunction system

Wide format color, all in one



Don't waste a bit of valuable space. Jump over to the one system that can do it all. The Océ ColorWave® 300 multifunction system effortlessly handles all your color and black and white print, scan, and copy jobs. And the optional top delivery tray saves even more space by neatly collating and stacking your documents.

Designed around your needs and our long understanding of the wide format industry, the Océ ColorWave 300 multifunction system delivers the quality and flexibility of a color printer with the ease of use and workflow efficiency of a monochrome system. It's the first truly integrated all-in-one color multifunction system for large format users.

Océ ColorWave 300 multifunction system

One system for all of your tasks: print, copy, and scan in color and black and white

Print, copy, and scan all your color and black and white wide format documents on one system. Thanks to the top mounted scanner, all functions can be controlled from one simple user panel. Unique Océ technologies, like Océ Image Logic® technology ensures first-time right results, while Océ Dynamic Switching technology maximizes productivity of mixed drawings—all without complex print settings or user configuration. Whether you are printing complex GIS or BIM drawings or copying detailed black and white CAD documents, the Océ ColorWave 300 multifunction system is up for the job.

The powerful controller swiftly handles the most widely used file formats— HP-GL/2, PDF, DWF, JPEG and many more—

and large files in concurrent operation without sacrificing speed. Files can be submitted via state-of-the-art drivers and job submission tools.

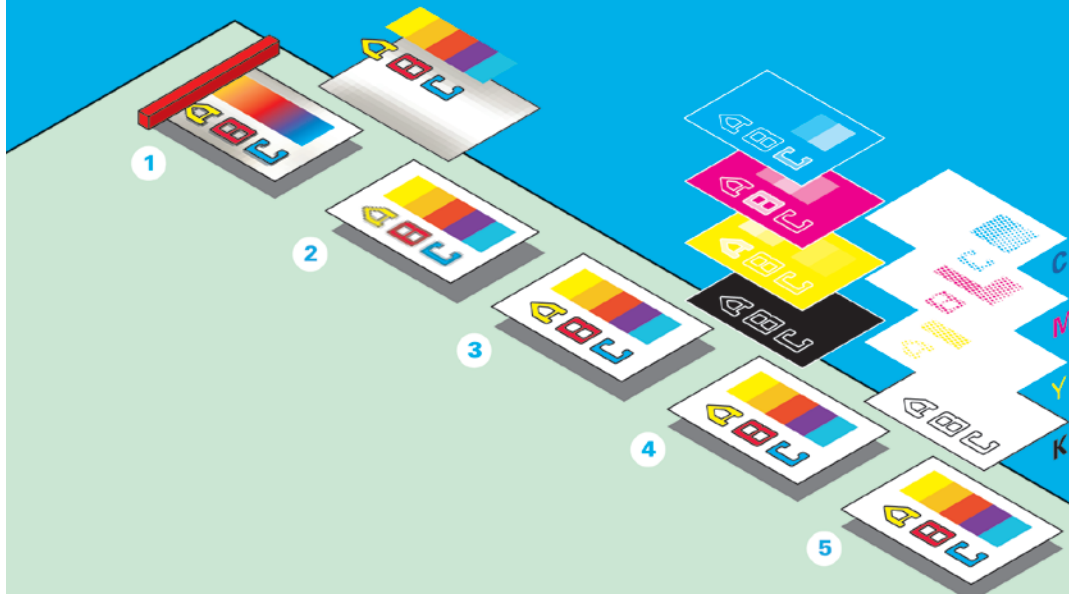
Realize further flexibility by printing from and scanning to a USB flash drive. And powerful job management software such as Océ Publisher Select™ provides an interactive preview showing the effects of selected settings on the output to avoid misprints.

The Océ ColorWave 300 multifunction system is a true all-in-one:

- One system for all your technical applications
- One system that can be easily operated by all users
- One system footprint for stacking all your documents
- One system that can handle your large format document needs today and tomorrow

Achieve superior scan and copy quality with Océ Color Image Logic technology

- 1 **Scanning:** scanner efficiently captures the original image
- 2 **Background correction:** removes unwanted wrinkles and background without affecting critical light colored information
- 3 **Filtering:** sharpens lines and text
- 4 **Color management:** matches colors of original to printer ensuring optimal copy quality
- 5 **Halftoning:** converts image to printable data



All-in-one large format color system



1 Efficient scroll and click user panel
Simply scroll and click to select with smart buttons and color visuals to clearly guide you through copy, scan, and print jobs.

2 Time saving templates
Templates enable recurring tasks to be performed at the touch of a single button. Format resolution, color or B&W, file format, destination, etc. Just press a button and start.

3 Convenient USB printing and scanning
Easily print and scan documents, on the spot, with a USB flash drive so you don't have to haul stacks of plans around. Ideal for frequently revised documents.

4 Neat document stacking
Active curl guide and air separation keeps different sizes and types of media neatly collated and stacked on optional top delivery tray. No extra space table required.

5 Superior color and black and white scanning with Océ Color Image Logic technology
Océ Color Image Logic technology automatically compensates for wrinkles and background to produce superior results without affecting information in light colors.

6 High print quality and productivity ensured with Océ Dynamic Switching technology
Automatically determines the best print setting for each part of the plot. Delivers high print quality without sacrificing productivity.

7 Uninterrupted operation
Print, copy, and scan at the same time. Add ink and paper while system is running. Easily load new media. Paper is fed, cut, and sized — automatically.

8 Efficient workflow
Océ ExpressWebTools provides a web-based job submitter so users can print from any desktop without installing additional software. Track costs with optional Océ Repro Desk Studio software.

One system that saves: reduce floor space and costs

Reduce floor space requirements by replacing multiple printers and scanners with a single system that can handle both color and monochrome output. The top delivery tray eliminates the need for an extra stacking table, allowing neatly collated copies/prints to be easily picked up from the front. Media and ink are loaded from the front for further convenience.

Reduce cost by investing in one system to do both color and monochrome tasks. Consolidating multiple devices to one system simplifies supply requirements and IT support resources. And the design and technology of the Océ ColorWave 300 multifunction system lowers energy consumption compared to conventional monochrome systems.

One system to grow with your needs: grow your business sustainably

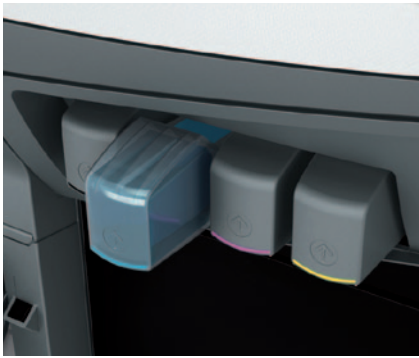
Boost your competitive edge by applying monochrome or color as needed to enhance documents and make your company stand out. The Océ ColorWave 300 multifunction system easily accommodates monochrome jobs without compromising on throughput for color applications.

The Océ ColorWave 300 multifunction system helps achieve a more sustainable working environment. Waste is eliminated by using automatic original and media size recognition and image positioning features to avoid misprints. And your working environment is not affected by ozone, dust, or odors.



General	
Description	
Technology	
Number of inks/printheads	
Speed	
Warm-up time	
Configurations	
Roll options	
Output delivery	
Certifications	
Printer	
Print resolution	
Paper capacity	
Output sizes width	
Output sizes length	
Paper weight	
Media type	
(www.oceusa.com/imagingsupplies)	
Controller	
Controller type	
Memory	
Hard drive	
Page Description Language	
Scanner	
Scanner type	
Scan resolution	
Scan speed	
Scan format	
Scan destination	
Original size width/length	
Original thickness	
Scaling	
Preset modes	
Print, copy, and scan workflow	
General workflow	
Submission	
Job management	
Accounting	
Templates	

Wide format color, all-in-one (single footprint print, copy and scan system)
Thermal inkjet with Océ Dynamic Switching technology
3 black printheads (K) and 2 printheads each color (C, M, Y)
Black and white: 41 seconds/E-size; Color: 63 seconds/E-size
Instant on
Océ ColorWave 300 R multifunction system (includes receiving tray)
Océ ColorWave 300 T multifunction system (includes top delivery tray and receiving tray)
2 rolls (standard)
Front-accessible receiving tray
Optional top delivery tray with active curl guide, stacks up to 50 sheets depending on media type and size
ENERGY STAR®, TuV GS, CETECOM, CE, UL, cUL, RoHS, CB, FCC, RoHS, FEMP
True: 600 × 600 dpi
Up to 395' per roll, standard 2 rolls
11"-36"
8.5"-147' 6" (might influence side margins when > 16')
16 lb.-50 lb.
Uncoated papers, recycled papers, coated papers, transparent papers, photo papers and films
Embedded Océ PowerM® controller with Windows XP® Embedded
1 gb
160 gb
HP-GL, HP-GL/2, TIFF, JPEG, DWF, Adobe® PS®/PDF (option)
CALS, NIFF, NIRS, ASCII, CalComp 906/907/951, C4
Contact Image Sensor (CIS) with Océ Color Image Logic® technology
Optical resolution 600 × 600 dpi
Up to 38'/min. (monochrome), up to 13'/min. (color)
TIFF, PDF (PDF/A), JPEG, Multipage TIFF & PDF/A, CALS
Local USB flash drive, controller, network via FTP or SMB
8.2"-36"/8.2"-52' 6"
Up to .031" (non rigid media)
Scale to standard format and custom scale 10 %-1000 %
Color: Artwork, line/text, map, photo
Grayscale/B&W: Line/text, folded line/text, colored original, photo, blueprint, dark original
Concurrent print, copy and scan of single documents or sets
Single files: Local USB flash drive, Microsoft® certified Windows® driver, Adobe® PostScript® 3 driver
Sets of files: Local USB flash drive, Océ Publisher Select, Océ Publisher Express (web-based), Océ Client Tools™ Publisher software
Océ Express WebTools single interface to view and control the system via an Internet browser without the need to install additional software
Monitor and manage the system status, settings, network configurations, and updates; Includes Smart Inbox
Account Center (option) application featuring customized accounting fields and copy/print/scan lock out
Compatible with most third party cost recovery and print tracking software
Four each user-defined copy and scan templates. Enables recurring tasks to be performed at the touch of a single button



Options	
Hardware	Océ Scanner Express (integrated on top of the printer for copying and scanning) Top delivery tray with active curl guide: for stacking of different media types and sizes
Software	Adobe PostScript 3/PDF file interpreter. Enables the submission of PDF files with USB flash drive or job submission tools directly to the printer Océ Repro Desk Studio software: for printing to multiple wide format devices, viewing and cost tracking Océ Account Center: featuring customized accounting fields and copy/print/scan lock out
Network information	
Client OS support	Windows driver for Windows 7 (32 & 64 bit), Vista® (32 & 64 bit), XP (32 & 64 bit), Windows Server® 2008 (32 & 64 bit), and Windows Server® 2003 (32 & 64 bit). Windows Terminal Server, Citrix® Metaframe and presentation server
Standard interface	Ethernet 100 mb/sec., 1gb/sec.
Network protocols	TCP/IP, IPv6, IPX/SPX, Windows APIPA, IPv6
Printing protocols	LPR, Novell®NDPS, FTP
Scanning protocols	FTP, SMB
Security	Electronic file shredding permanently removes all traces of deleted jobs on the controller Complies with DoD 522-22M standard
Environmental data	
Power consumption active mode (printing)	Engine (printer + scanner): 201 W, controller: 38 W
Power consumption ready mode (standby)	Engine (printer + scanner): 146 W, controller: 38 W
Power consumption sleep mode	Engine (printer + scanner): 3 W, controller: 38 W, ENERGY STAR
Power requirements (V/Hz/A)	100 V – 240 V, 50/60 Hz, 9 – 4 A
Energy consumption per print	34 Wh calculated average based on an E-size print and EPA ENERGY STAR® TEC method
Noise Level (active/ready)	66 dB (A)/47 dB (A)
Ozone concentrations	None
Recyclability hardware	Designed to be upcycled or recycled. Engine made of steel and recyclable plastics
Recyclability ink tanks	Made of recyclable plastics polyethylene and polypropylene
Size print engine (w x d x h)	78" x 31" x 50" (including scanner, receiving tray and user panel) 78" x 36" x 68" (including scanner, top delivery tray, receiving tray and user panel)
Size scanner (w x d x h)	43" x 12" x 5.5" (fits on top of print engine)
Weight print engine	400 lb.
Weight scanner	54 lb.
Weight top delivery tray	82 lb.
Supplies	
Consumable type	Océ high density aqueous ink (black: pigment, color: dye)
Size	Ink tank size: Black ink tank size: 200 ml, 400 ml Color ink tanks size: 180 ml, 350 ml

Beyond the Ordinary

Environmental Certifications



Mixed Sources

Product group from well-managed forests and other controlled sources
www.fsc.org Cert no. SCS-COC-00856
© 1996 Forest Stewardship Council



Awards



communication design award

2006



product design award

2006



product design award

2007 gold



product design award

2008



Partners Certifications



Printing for Professionals

Creating global leadership in printing

Canon and Océ join forces to create the global leader in the printing industry. For our customers this combines Canon and Océ technology with the support of the Océ direct sales and service organizations. Look to the new Canon-Océ combination for:

- Enterprise printing in the office and corporate printroom
- Large format printing of technical documentation, signage and display graphics
- Production printing for marketing service bureaus and graphic arts
- Business Services for document process outsourcing

Océ North America

Wide Format Printing Systems
5450 North Cumberland Avenue
Chicago, Illinois 60656
1-800-714-4427
1-773-714-4076
Fax 1-773-714-4056
email: us.info@oce.com

Océ-Canada Inc.
4711 Yonge Street, Suite 1100
Toronto, Ontario, M2N 6K8
Canada
1-800-668-1945
Fax 1-416-224-5778
email: info.ca@oce.com

Océ Mexico, S.A. de C.V.
Ave. Pol. Paseo de la
Reforma No. 1236 Piso 4
Mexico City, DF 05348
52-55-5089-8700
email: mex.info@oce.com

To request a price quote, visit:
www.oceusa.com/WFPSquote

Have a question? Visit:
www.oceusa.com/WFPSquestion

For information and services, visit us at:
www.oceusa.com