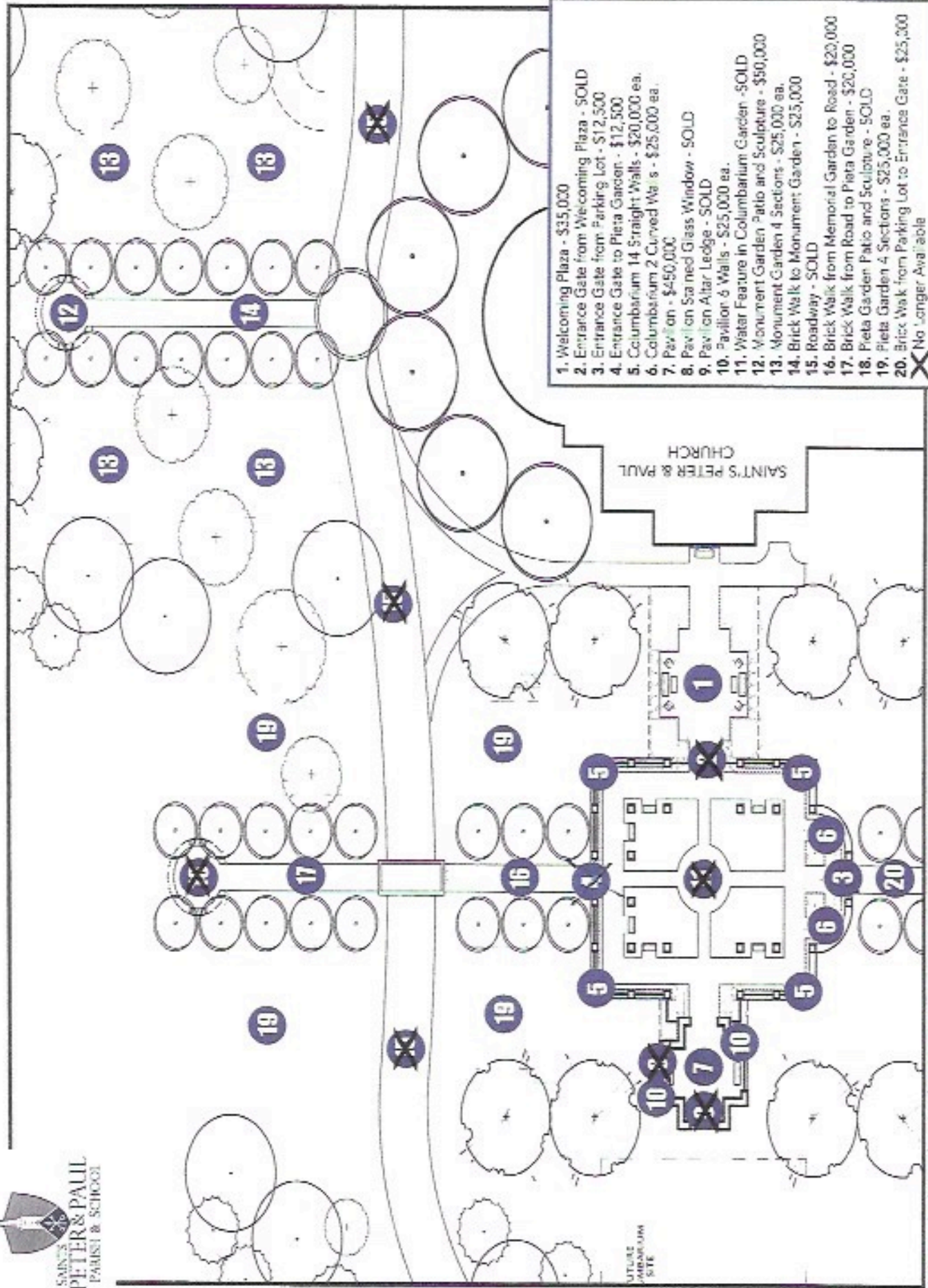


A Sacred Place on Parish Grounds
 Naming Opportunities as of September 2022



SAINT'S
 PETER & PAUL
 PARISH & SCHOOL



1. Welcoming Plaza - \$35,000
 2. Entrance Gate from Welcoming Plaza - SOLD
 3. Entrance Gate from Parking Lot - \$12,500
 4. Entrance Gate to Pieta Garden - \$12,500
 5. Columbarium 14 Straight Walls - \$20,000 ea.
 6. Columbarium 2 Curved Walls - \$25,000 ea.
 7. Pavilion - \$450,000
 8. Pavilion Stained Glass Window - SOLD
 9. Pavilion Altar Ledge - SOLD
 10. Pavilion 6 Walls - \$25,000 ea.
 11. Water Feature in Columbarium Garden - SOLD
 12. Monument Garden Patio and Sculpture - \$50,000
 13. Monument Garden 4 Sections - \$25,000 ea.
 14. Brick Walk to Monument Garden - \$25,000
 15. Roadway - SOLD
 16. Brick Walk from Memorial Garden to Road - \$20,000
 17. Brick Walk from Road to Pieta Garden - \$20,000
 18. Pieta Garden Patio and Sculpture - SOLD
 19. Pieta Garden 4 Sections - \$25,000 ea.
 20. Brick Walk from Parking Lot to Entrance Gate - \$25,000
- X** No Longer Available

This document is for informational purposes only. It shall remain the property of the Diocese of San Diego. All rights reserved. No. 2222