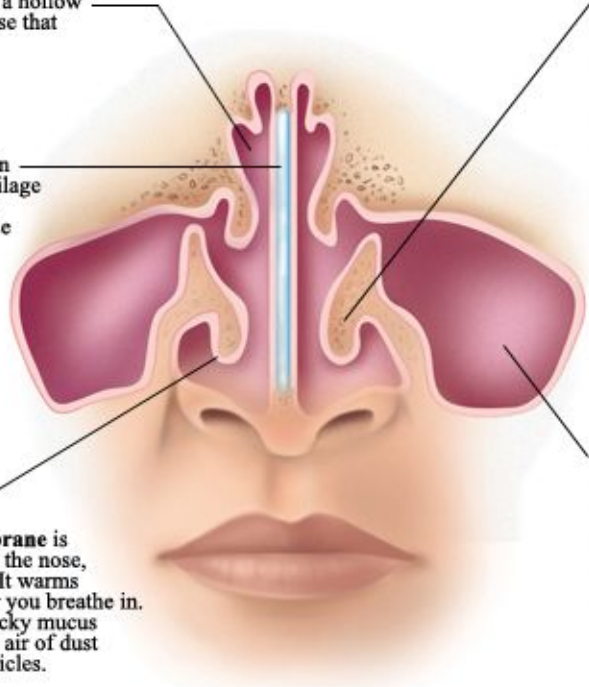


The nasal cavity is a hollow space behind the nose that air flows through.

The septum is a thin "wall" made of cartilage and bone. It divides the inside of the nose into two chambers.

The mucous membrane is thin tissue that lines the nose, sinuses, and throat. It warms and moistens the air you breathe in. It also makes the sticky mucus that helps clean that air of dust and other small particles.



The turbinates on each side of the nose are curved, bony ridges lined with mucous membrane. They warm and moisten the air you breathe in.

The sinuses are hollow, air-filled chambers in the bones around your nose. Mucus from the sinuses drains into the nasal cavity.