



CAMEO INTRAORAL SCANNER

CAMEO INTRAORAL SCANNER Convenient, efficient and sustainable

The digital dental clinic is the starting point of oral digitalization. The 3D Intra-Oral-Scanner is the first device in the digital workflow. The CAMEO Intraoral Scanner will be your most convenient and efficient multi-tool for various applications like diagnostics, patient education and of course digital impression taking. Provide your patients more and better services and increase quality and efficiency in your dental clinic.



The established pen-style of the wand provides a convenient haptics and feel.



Focus on application skills, intelligent data optimization, and supporting clinical toolkits.



Open and sustainable, the data format is open, and the software can be upgraded free of charge.








The CAMEO chair side solution provides patients the most sufficient treatment results.

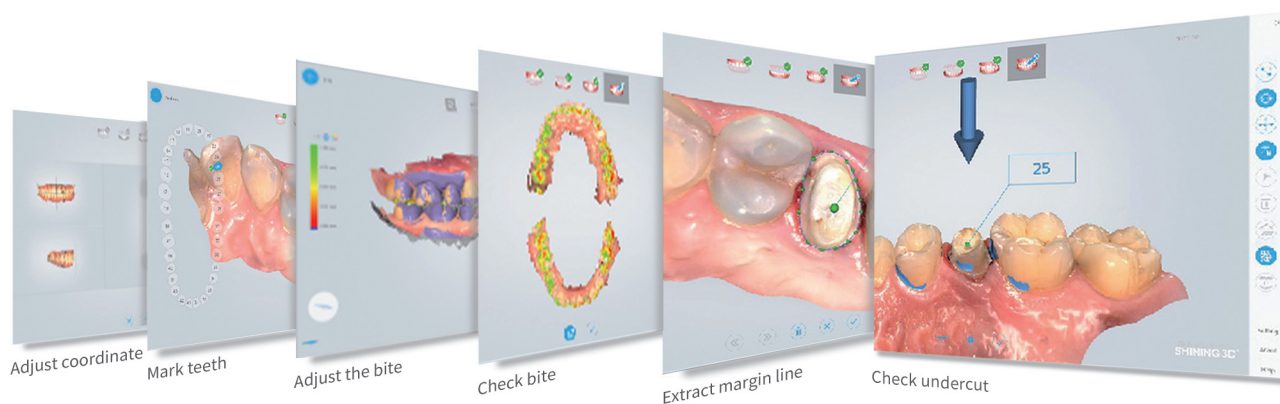
■ Make People Healthier and More Beautiful



Parameter

Product	CAMEO Intraoral scanner
Scanner wand size	305×52×37mm
Scanner wand size	No powdering, 3D video
Image Resolution	0.3MP
Output Data	STL,OBJ
Full-Arch-Scan Time	3-6min
Scanning Speed	15fps(video-based)
Scanning Accuracy	< 20μm
Temperature	10° C - 40° C (Accuracy can be influenced by too high or too low temperature)
Interface	USB3.0
Indications	    

CLINICAL TOOLKITS



CAMEO chairside solution



Intraoral scanning



Aidite cloud platform



AI manufacturing



Reconstruction
by chairside