

VIRTUOVIVO™

Intraoral Scanner

Create lasting impressions.



For professionals who want to benefit from the advantages of digital dentistry, Virtuo Vivo™ is the indisputable option for fast, accurate, and powder-less intraoral scanning in real color.

6 REASONS

to choose Virtuo Vivo™



Fast & accurate



Scanning in real color



Sterilizable sleeves



Small & lightweight



Open STL files

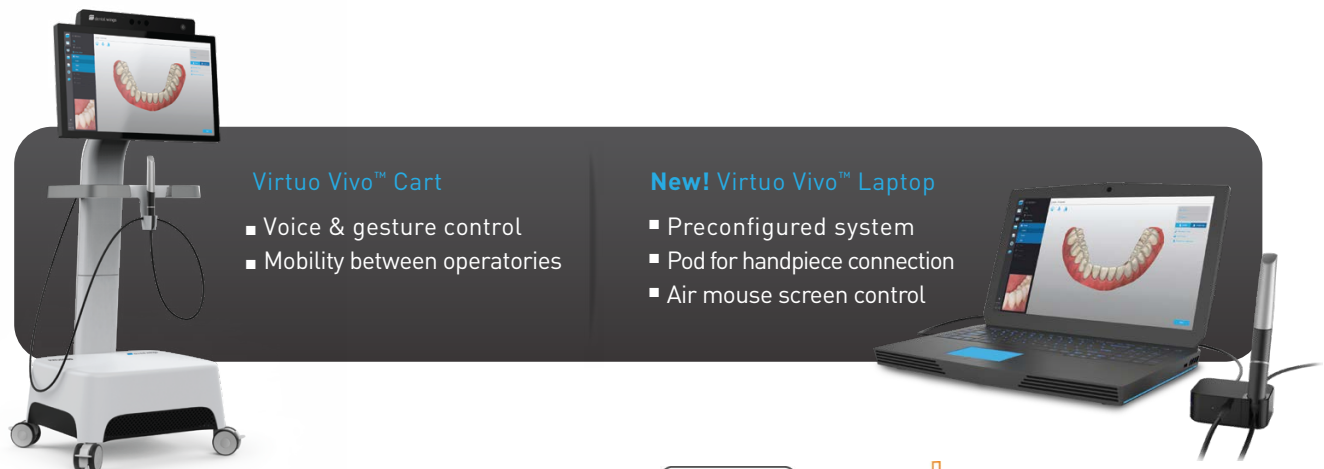


Streamlined workflows

New! Virtuo Vivo™ Remarkably compact and powder-less.



Resembling a standard dental tool, the small and lightweight (7.5 oz / 213 g) wand ensures unparalleled patient comfort and allows the clinician to assume a natural position relative to the patient when scanning.



Virtuo Vivo™ Cart

- Voice & gesture control
- Mobility between operatories

New! Virtuo Vivo™ Laptop

- Preconfigured system
- Pod for handpiece connection
- Air mouse screen control



DITARE
SMARTER DENTISTRY



Scan



Design



Mill

powered by:

 dental wings

Streamlined workflows that take scans even further.

Chairside Design & Production

Transfer files for chairside design with DWOS® Chairside or with other 3rd party software.



Real color scanning allows for a precise and user-friendly design of restorations.

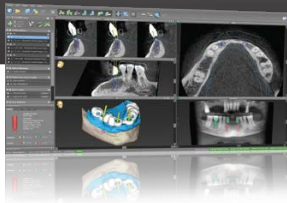


Mill with the Roland milling machines



Surgical Planning & Production

Use intraoral impressions for surgical planning and integrated drill guide design with coDiagnostiX®.



Send files directly to coDiagnostiX or export the STL files to a 3rd party surgical planning software.



Orthodontics

Connect directly to ClearCorrect™ clear aligner provider for orthodontic treatment.

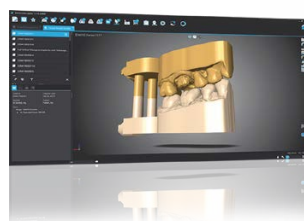


Clear aligners are effective, removable, and patients are increasingly opting for this solution.



Outsourcing to Lab

With open STL files, send digital impressions directly to a lab via DWOS Connect or other export method for design and manufacturing.



Voor meer informatie:
Ditare B.V.
076- 587 6969
www.ditare.info
info@ditare.info

