

# TECHNICAL DATA SHEET

## USES:

- Void Fill
- Oil, Gas and Water Well Decommissioning
- Seawall, Airport, Railway Repair
- Industrial and Storage Building Stabilization
- Mine Reclamation
- Concrete Lifting

## DESCRIPTION:

FillFoam™ is a versatile, hydroinsensitive, pre-expanded foam for use in many geotechnical applications. The foaming reaction does not generate heat, allowing it to be used to fill voids and tanks of any size. Cured FillFoam™ is chemically inert, and when injected underground, improves soil bearing capacity. This makes it a great fit for lifting and leveling jobs including airport runways and industrial buildings. Foam density can be easily adjusted on site, allowing the installer to tailor the foam to fit any application.

### DENSITY ASTM D1622

Average (lbs./ft<sup>3</sup>) 1.0-6.0+

### COMPRESSION PROPERTIES ASTM D1621

Proportional Stress (psi) 10-60+

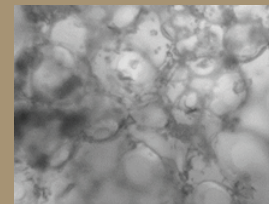
### REACTION TIME

Gel Time (adjustable) 1.5 - 7.5+ minutes

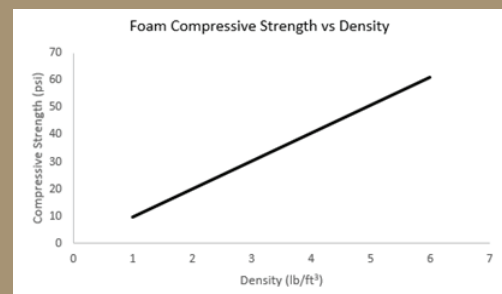
### EXPANSION RATIO

Foam Density	Times Expansion
1.0 lb/ft	67 times
2.0 lb/ft	34 times
3.0 lb/ft	22 times
4.0 lb/ft	17 times
5.0 lb/ft	13 times
6.0 lb/ft	11 times

Microscopic view of FillFoam™



Foam Compressive Strength vs Density



Certified to NSF/ANSI/CAN 61