

SHELTERBOX GUIDE



ShelterBox

Rotary



ShelterBox is a registered charity independent of Rotary International and The Rotary Foundation. Charity No: 1096479

TOGETHER, WE CAN HELP TO SAVE LIVES AND PROVIDE HOMES AND HOPE AFTER DISASTER.

Welcome to your District Conference. Things look quite different this year and I'm sure like you, we really miss not being able to gather, talk face to face and celebrate all that we have achieved in partnership this year.

However, we hope this booklet helps to share with you all of the information we would usually bring to your conference.

The unique Project Partnership that ShelterBox has with Rotary International is truly valued by all of us at ShelterBox. In these unprecedented times, partnership and connection are vital. Now more than ever the project partnership between ShelterBox and Rotary is fundamental to what we do.

There are still many ways to support and stay connected with our work around the world. This booklet is designed to give you the information that you need.

We would of course love to hear from you, so please don't hesitate to get in touch or reach out to your ShelterBox District Coordinator to find out more.

On behalf of the whole ShelterBox Team thank you for your ongoing support and I hope you enjoy your virtual District conference.

Yours sincerely,



OLIVIA JEFFRIES
Rotary Engagement Officer



Contact your District 1200 Coordinator, long-time supporter, speaker, ambassador and Rotarian Hugh Deed email:
hughdeed@shelterbox.org



ShelterBox



OUR VISION

A world where no family is without shelter after disaster.



OUR MISSION

Our purpose is to provide emergency shelter to families who have lost their homes to disaster, enabling them to rebuild their lives. We work with our global network to support communities around the world to rebuild and recover from some of the worst days of their lives. Over the past 20 years we have supported over 1.7 million people to help with recovery after disaster.



PROJECT PARTNERS

ShelterBox began in 2000 as one Rotary Club's millennium project. With the support of Rotary members and clubs around the world, ShelterBox grew to become an internationally recognised, independent disaster relief organisation. Since 2012, ShelterBox and Rotary have been official Project Partners in disaster relief. By working together, we are able to collaborate and combine resources to ensure that we can support more communities in desperate need of shelter after disaster.

Together with Rotary, throughout our 20 year history,

**WE HAVE SUPPORTED OVER 1.7 MILLION
PEOPLE IN 97 COUNTRIES**

CASE STUDY: **ALEJANDRO**

Rotary has assisted us on every single deployment in the Philippines since 2004. In May, Rotary was once again on hand to support us in a response through our in-country partners, Terres des Hommes (TdH), as Typhoon Vongfong swept through Eastern Samar, destroying 3,000 homes and damaging 16,900 more.

COLLECTIVELY WE SUPPORTED



998
FAMILIES

One of those families was Alejandro's. Alejandro and Jennifer were proud of their home before the disaster hit. In the days after the typhoon struck, Alejandro and his family took refuge at Barangay Hall. 'It was crowded, noisy, we were cooking with an umbrella because the kitchen had no more roof.

It was really uncomfortable.' When Alejandro and Jennifer were able to return to their home, they were shocked by the level of destruction. 'Our house was completely destroyed.'

ShelterBox Operations Philippines quickly responded, working closely with our new partner Terres des Hommes (TdH) to provide essential aid items to families whose homes were totally destroyed by the powerful typhoon. We distributed tarpaulins and rope, as well as additional household items which will enable families to rebuild their homes and provide a private space to protect themselves from the threat of coronavirus.

We asked Alejandro to describe the moment he collected the aid items:

“

I had a good and nice feeling. Inside I was thinking we can have a roof and wall now, and we will be protected from rain and sun. I was really grateful. ”



*In 2020, despite the global challenges,
with Rotary support worldwide we helped*



200,000 PEOPLE
ACROSS 17 DIFFERENT PROJECTS

HELPING PEOPLE AFFECTED BY



**TROPICAL
CYCLONES**



FLOODING



DROUGHTS



**VOLCANIC
ERUPTIONS**



CONFLICT

Almost all with the added threat and challenges posed by coronavirus



Rotarians and Rotary groups across the world support us in a variety of ways, from raising funds and awareness to providing support on the ground during our response to a disaster.

Despite a global pandemic impacting the majority of 2020, support continued to come in all forms, enabling us to reach communities impacted by both disaster and the threat of coronavirus.

Many Rotary Clubs found alternative and very creative ways to fundraise through the pandemic, from a virtual Speakeasy to taking on a range of physical challenges.

ShelterBox Operations Philippines quickly responded, working closely with local Rotary and our new partner Terres des Hommes (TdH) to provide essential aid

Each year, Rotary helps us to go further and support more people. Read more about the impact our unique partnership had in 2020.

MOVING FORWARD

In 2021, some of the world's most vulnerable families will be facing a perilous triple threat – disasters, coronavirus and climate crisis.

We are there after extreme weather events like tropical storms and seismic events, as well as for those fleeing wars, conflict and complex emergencies.

On top of violent hurricanes and typhoons, families in some of the poorest parts of the world are also facing the deadly threat of coronavirus. This crisis within a crisis is hitting vulnerable people hardest. Emergency shelter and essential household items can save lives, helping people to self-isolate and protect themselves from the virus. It can keep households socially distanced, help people share fewer items and keep families as healthy as possible.

Climate change is a humanitarian crisis. It's having a direct impact on the people we support. We see this when we work with communities.

Vulnerable families are forced to leave their homes to survive – either because of disasters or to find food, water or to make a living. A recent report estimates that 1.2 billion people could be displaced by 2050.

Together, we can help to save lives and provide homes and hope after disaster. We can support families to recover, stay healthy and keep each other safe.

“With a global pandemic, environmental and sustainability challenges, a world refugee crisis and global inequalities, the world needs Rotary and ShelterBox now more than ever.

- Holger Knaack, Rotary International President 2020/21



OUR AID ITEMS

We deliver the essentials families need to begin rebuilding their lives after disaster

Each disaster is different, and so is every community. We don't believe that one size fits all, so we spend time talking to affected families to make sure we provide the right support at the right time.



£590*

SHELTERBOX

Our sturdy green ShelterBoxes are filled with the essential tools to rebuild and recover after disaster.



£385

TENTS

When families can't start rebuilding or return to their homes immediately after disaster, durable tents can make them feel safe and protected.



£69

SHELTER KITS

Our customised kits are packed with tools and materials to help families rebuild or repair homes after disaster.



£47

WATER FILTERS

Emergency water purification provides safe drinking water, minimising water-borne disease.



£30

COOKING SETS

Family meals help to provide the framework of everyday life and turn a shelter into a home.



£11

SOLAR LIGHTS

They are more than just light - they can provide comfort and allow families to regain their livelihoods.



£7

BLANKETS

Blankets provide vital warmth and comfort when families are recovering from disaster.



£4

MOSQUITO NETS

Mosquito nets are a simple but effective way to keep families safe from insect-borne diseases.

*£590 is the average cost of a ShelterBox - the contents varies depending on the needs of the families we are helping.

YOUR SUPPORT IN ANY FORM ENABLES FAMILIES TO GET ON THE ROAD TO RECOVERY AFTER DISASTER

GET INVOLVED

This has been a challenging time for us all, so we are especially thankful to Rotarians and Rotary clubs that continued to go above and beyond to raise vital funds for ShelterBox

We have been inspired by the ways clubs have adapted their fundraising to continue to support during the pandemic, from physical challenges, to virtual events and more.

After hearing more about our work in response to the coronavirus pandemic Warwick Rotary Club donated £500 and booked a virtual speaker to hear how this would be used. Club member, Camille Sethi, then decided to take on a personal challenge, to help increase their donation and in July ran a Half Marathon in aid of ShelterBox.

When Covid restrictions put a dampener on usual Christmas fundraising, the Rotary Club of Helensburgh Garelochside took the fun online by hosting a virtual balloon race. Entrants were able to follow their balloons on their journey around the world.

June, a Friend of the Rotary Club of Dumfries, decided to make and sell Scottish tablet. June advertised it through her friends on Facebook, charged £2 per bag, and raised an incredible £225!

If you are inspired to get involved visit our website to find out more.

[DISCOVER MORE >](#)

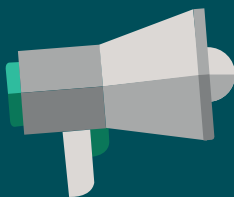


Camille Sethi in training for her half marathon in aid of ShelterBox



June and Tom Marchbank with bags of tablet to sell

OTHER WAYS TO GET INVOLVED:



Booking a free ShelterBox speaker to give a virtual talk to your club is one of the most inspiring ways to hear about our work.

[DISCOVER MORE >](#)



You can sign up to receive the latest news from ShelterBox, direct to your inbox.

[DISCOVER MORE >](#)



Share what we are doing with your networks and community on social media

[DISCOVER MORE >](#)



Get in touch rotaryrequest@shelterbox.org or get in touch with your local ShelterBox District Coordinator



ShelterBox

Rotary



Thank you for being a part of the team!

Together, we can help to save lives and provide homes and hope after disaster. We can support families to recover, stay healthy and keep each other safe.

rotaryrequest@shelterbox.org

SHELTERBOX.ORG

ShelterBox is a registered charity independent of Rotary International and The Rotary Foundation.

ShelterBox and Rotary International are project partners in disaster relief. **Charity No:** 1096479